

Lesley University

DigitalCommons@Lesley

---

Lesley Newspaper Archive

Special Collections and Archives

---

Winter 12-18-1956

## The Lantern (December 18, 1956)

Lesley College

Follow this and additional works at: [https://digitalcommons.lesley.edu/newspaper\\_archive](https://digitalcommons.lesley.edu/newspaper_archive)

---

### Recommended Citation

Lesley College, "The Lantern (December 18, 1956)" (1956). *Lesley Newspaper Archive*. 13.  
[https://digitalcommons.lesley.edu/newspaper\\_archive/13](https://digitalcommons.lesley.edu/newspaper_archive/13)

This Book is brought to you for free and open access by the Special Collections and Archives at DigitalCommons@Lesley. It has been accepted for inclusion in Lesley Newspaper Archive by an authorized administrator of DigitalCommons@Lesley. For more information, please contact [digitalcommons@lesley.edu](mailto:digitalcommons@lesley.edu), [cvrattos@lesley.edu](mailto:cvrattos@lesley.edu).





# The Lantern

LESLEY COLLEGE

29 Everett Street, Cambridge

Vol. XVIII

DECEMBER 18, 1956

No. 5

## GIFTED CHILD CENTER TO PIONEER

### Lesley's Children's Christmas Party Big Success

The annual Lesley College Christmas Party for underprivileged children was held in the Livingston Stebbins Gymnasium from 3 to 5 o'clock on December 11. Approximately forty children from a nearby settlement house were present. Barbara Bussiere, general chairman of this function was aided by Anne Graham, Jeanne Hormann and Mrs. Nora Silsby, in picking up the children and returning them. A bus was hired for this purpose. The game committee, consisting of Joyce Leonard, chairman, Jane Beeten, Joan Petraglia, Lindalee Levin, Deborah Millman and Dorothy Denman, organized orderlies which kept the children occupied during the party.



### ADVISORY COUNCIL ORGANIZED

When it was announced last spring that Lesley College would begin plans at once for the formal development of a Gifted Child Center at the Lesley-Ellis School, the decision had been long tempered by reflection. For many years the school had enjoyed the reputation of offering special enrichment work for advanced children whose interests and capabilities warranted it. Studying the Lesley-Ellis records since the college purchased it in 1948 from the Cambridge School of Weston, the administration was struck by the large number of high I.Q. children in the past and present enrollment.

Previously, the school had had a small group of children who were identified as gifted. These children had been given special assignments and had been given special educational contributions were to have broad implications.

For this reason, we organized last month a local Advisory Council composed of three divisions of up to nine members each: non-public (independent and parochial) schools, public school systems, and colleges and universities. As you read through the Council list at the end of this column, you will note that, in every case, the chief officer of the institution is the Council representative. Each of these educational leaders, composing

(Continued on Page 3)

### President White's Christmas Message

Immediately after Convocation Lesley's undergraduates—some 350 of you from thirteen states and four foreign countries—will be crowding cars, trains, busses, and planes on your way to homes of relatives or friends for the long vacation. This period has been provided for your re-creation as well as recreation. Try to balance your rest and fun so that you will be able to return fully prepared in health and spirit for the winter months ahead. But above all, find some time, during the Yule-tide weeks to reflect upon your many blessings, your rich opportunities. Be grateful to those who have given that you may have. And put your gratitude into tangible form by generous thoughts and deeds for others.

All members of Lesley's staff and faculty join me in wishing each of you

#### CALENDAR OF EVENTS

- December 18—Convocation
- Classes end
- January 3-4—Building Fund Project
- January 4—Emerald Key Tea Dance
- January 11—Junior Money Maker
- January 16—Vespers
- January 17—Assembly.
- Building Fund Cake Sale

### CHRISTMAS CONVOCATION

Lesley's Christmas Convocation will be held this year, as before, at the Hotel Continental on Tuesday, December 18, at 1:30 P.M. Undergraduates should be in their seats promptly at 1:15. Seniors and faculty members will report earlier in cap and gown to form the academic procession.

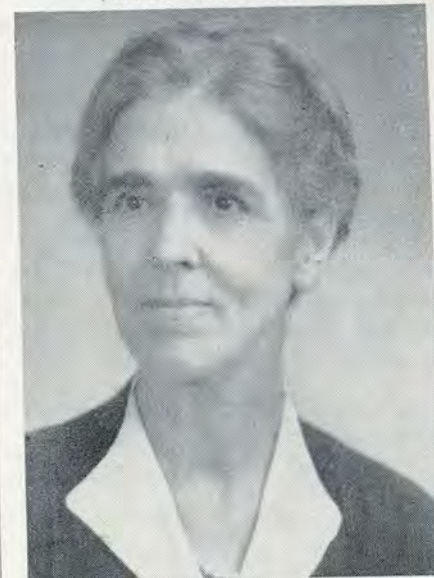
The program will include the traditional address by President Trentwell Mason White with brief messages of greeting from Dr. Livingston Stebbins, chairman of the Board of Trustees, and Dr. Clara M. Thurber, Dean of the Faculty. The Christmas Choir under the direction of Mr. Benjamin will sing, and Dr. Schofield, college Chaplain will offer the invocation and benediction.

Highlight of the occasion will be the conferring of an honorary doctorate upon Mrs. Cora Trawick Court, one of Lesley's two retired faculty members. Mrs. Court was for seven years on Lesley's Faculty and Residence Director of Jenckes Hall.

All of Lesley's undergraduates are expected to attend this convocation, which will last approximately an hour.

a happy and satisfying holiday and every good fortune for the New Year 1957.

—Trentwell Mason White



Mrs. Cora Trawick Court

### VESPER PLANS

The next Vesper service will be held in the Livingstone Stebbins Library on Wednesday, January 16. The definite time will be posted at a later date, since there is a possibility that the hour will be changed from 7:00 to 6:30 p. m.

Rabbi Hartstein has been invited to speak and Vespers is anticipating a large attendance from the student body. Engraved invitations will be sent out to the faculty, alumnae and local colleges.

Following the services there will be a coffee hour where the students will be allowed to discuss the lecture amongst themselves and with the speaker. This informal gathering will tend to make Vespers more meaningful to the individual, and give each person a chance to express his own ideas.



## VACATIONS HERE! *I Wonder . . .*

## The Lantern Staff

*Business Manager*  
Barbara Yarlott  
*Circulation Manager*  
Katherine Schatz  
*Contributors*  
Jane Adelberg  
Gladys Acosta  
Sheila Berger  
Elaine Bornstein

Susan Finn  
Barbara Goldman  
Toby Hoffenberg  
Judy Kahn  
Roberta Shapiro  
Katherine Schatz  
Dede Sharp  
Frances Yudkin  
Marion Zashin  
Elaine Zuker

*Faculty Advisor, DR. LESLIE M. OLIVER*

*The Lantern Wishes To Say:*  
**MERRY CHRISTMAS and HAPPY NEW YEAR**



## A CHRISTMAS THOUGHT

## Open Up Your Hearts

This drive is being sponsored by the Y.W.C.A. Let's back it up.

## Building Fund Tries New Money-Maker

Georgia Louras is chairman of the Building Fund Committee, Arline Knovsky and Helen Klahr co-chairman, Linda Cooley, Barbara Goldman and Gail Linser members of the committee.

## VACATIONS HERE!

T'was the week before Christmas when  
all through the hall,  
Each Les - elf was packing her clothing  
and all,  
The suitcases opened by the beds with  
care,  
In hopes that her ride would soon be  
there;  
The books were nestled all snug in their  
place,  
While visions of fun danced before her  
face,  
And Mrs. — in her bonnet; and the elf  
in her hat,  
Were thinking about home and this and  
that.  
When out in the driveway there arose  
such a clatter,  
Miss Elf turned from packing to see what  
was the matter.  
Away to the window she flew like a  
flash,  
Tore open the curtains and threw up the  
sash.  
The moon on the breast of the new  
fallen snow  
Gave a lustre like mid-day to objects  
below,  
When, what to her wondering eyes should  
appear,  
But her date's M. G. showing up bright  
and clear.  
With a collegiate looking driver, so  
handsome and tall,  
She knew in a moment its her date after  
all.  
More rapid than Bromo in the door he  
came,  
And whistled and shouted and called  
her by name:  
"Now . . . , Now . . .  
along . . .

oy . com

*I Wonder . . .  
As I Wander*

I have wondered what happens to the time we work so hard to save. We cannot store it up like pennies in a bank for future use. It keeps on running with us as we run. I have been wondering of late just what happens, for I hear so much talk of how to save time — and so little suggestion, or explanation, of using the time so saved. I am as guilty as anyone, but since I have started to think of a Christmas message to you, I have stopped to listen, to observe, to think, and to wonder. . . . as I wander."

## HARVARD SPA

1246 MASS. AVE., HARVARD SQ.  
— light lunches —  
— books - magazines —  
— midnight snacks —

## ELSIE'S

**DELICATESSEN — LUNCH**  
Noted for Best Sandwiches  
TO EAT IN OR TAKE OUT  
71a Mt. Auburn Street, Harvard Square  
Elsie & Henry Baumann EL 4-8362

**RICHDALE PRESS**

(Printers of the LANTERN)

6 WALDEN STREET

CAMBRIDGE

ELiot 4-0505



## DANCE PLANNED BY EMERALD KEY

The Emerald Key Society will sponsor a Tea Dance on January 5, to be held in the dining room from four until seven o'clock. A three-piece orchestra will provide the music for the evening and you may come stag or in couples. Tickets are \$.75 a person or \$1.25 a couple. Some of the men's colleges invited to this affair are Harvard, M. I. T., Tufts, Boston College and Harvard Law School. The following girls have been working hard on committees for this dance: Chairman—Marilyn English; Tickets—Jane Beeten, Barbara Lamkin; Refreshments—Joan Petraglia, Barbara Stellwagen; Publicity—Dorothy Wynott, Beverly Gram; Orchestra—Carol Jan-son, Sachiko Tanaka.

## EVENTS TO SEE EUGENIA

At the Plymouth Theatre starting on Tuesday, December 25, John C. Wilson will present Tallulah Bankhead in the starring role of *Eugenia*, a new play based on Henry James' novel, *The Europeans*. This engagement will continue through January 12.

## FANNY

This production will begin at the Schubert Theatre on Tuesday, December 25, with Italo Tajo, the celebrated Italian bass baritone, in the role of Ezio Pinza. *WALTZ OF THE TOREADORS*

At the Colonial Theatre on New Year's Eve, December 31, *Waltz of the Toreadors* will open. It is a satirical comedy and stars Sir Ralph Richardson, who is returning to this country after a ten-year absence.

## CHRISTMAS PARTIES

A list of Christmas parties will be published in the process of

Male

ing

nae

ect

included Elaine Kritz, Marcia Solberg, Marcia Rabstein, and Bettie Morganbeser.

Mr. Allan S. Beale, Assistant Secretary of the Savings Bank Life Insurance Council, spoke to the Family Relations class Monday, December 17, on types of insurance and the importance of adequate insurance after marriage. Mr. Beale has been coming to Lesley to speak to this class for the last four years.

Tel. Hubbard 2-9583

**Louis Young**  
WOOL -- WASTE

176 Federal Street

Boston 10, Mass.

Cleaning by:  
**MONACO**

"Let us show you the difference"  
Same day dry cleaning service  
Complete Laundry Service  
Seamstress or Tailor on Premises

4 HUDSON ST. (off 1672 Mass. Ave.)  
KI 7-8008

**RITE-WAY  
DRY CLEANERS Inc.**

63 CHURCH ST. (at Harvard Sq.)  
UN 4-7996

**FREE**  
Electronic Test and Regulation  
of your Watch  
While You Wait, at the  
**SWISS WATCH MAKER**  
58 CHURCH ST. CAMBRIDGE

Notebooks  
Typewriters  
Student Supplies  
and  
Christmas Cards and Gift Wrappings  
are now on display

**BOB SLATE, Stationer**  
1288 Mass. Ave., Hyd. Sq. KI 7-1230

## NETPA COMMITTEE MEETING

The New England Teacher Preparation Association, an organization of about 45 New England institutions of higher education holds its annual meeting each October in Swampscott. Every member college is represented by its president (or designated delegate) along with a number of junior and senior students. At last October's conference, it was voted to have the organization's executive committee get together by the end of November and undertake a special study of NETPA's past programs. The committee was then to work out a new approach to next autumn's conference and suggest a set of by-laws which might be superior to NETPA's present unwritten (but traditionally-followed) constitution.

On Friday afternoon, November 30, President White, a member of the executive committee, and Grace Weston, Lesley's junior student representative at last fall's Swampscott convention, met with committee members and students from eight other institutions at Rhode Island College of Education. There, after a series of consultations, some with faculty and students separated, some with both groups merged as one, the problems of NETPA were discussed through luncheon, Saturday noon.

A few basic principles were agreed upon. However, many of the details of particular interest to Lesley delegates for next year will be announced only after all member colleges have seen and worked over the executive committee's recommendations. When the program is more fully in shape, a complete report will be published.

## ADVISORY

(Continued from Page 1)

a conspectus of New England's best known and most respected schools will, in turn, appoint one or more co-operating "firing-line" experts from their faculties. But all official Council representatives are personally aware of the value of the project to their organizations and to Education generally, and have, accordingly offered their full assistance. Meanwhile, all Lesley faculty members have been called upon to contribute ideas, questions, bibliographies, and other materials that may develop from their subject fields. Thus, a complete cross-section of faculty thinking will be available as a working basis for our initial operations.

The plan will move slowly because of the many details involved. Two to three years, for instance, will doubtless be spent in arriving at adequate answers to point I in the program—how to identify the gifted child. Replies to points II, III, and IV which seek to find what curriculum, what teaching methods, what teachers should be employed, will be sought only after the participants in the project have tested fully and approved the identification machinery.

Non-Public Schools Division:

Head. C. H. Hodgman, Beaver Country Day School.

Head. C. F. Hamilton, Belmont Hill School.

Head. C. B. McCoy, Brimmer and May School.

Head. E. H. B. Pratt, Browne and Nichols School.

Head. M. A. Cheek, Jr., Cambridge School of Weston.

Mother's Church Academy.

Mother's Church Academy.

Mother's Church Academy.

Mother's Church Academy.

Mother's Church Academy.

Mother's Church Academy.

Mother's Church Academy.

Mother's Church Academy.

Mother's Church Academy.

Mother's Church Academy.

Mother's Church Academy.

Mother's Church Academy.

Mother's Church Academy.

Mother's Church Academy.

Mother's Church Academy.

Mother's Church Academy.

Mother's Church Academy.

Mother's Church Academy.

Mother's Church Academy.

Mother's Church Academy.

Mother's Church Academy.

Mother's Church Academy.

Mother's Church Academy.

## To Name Your Christmas Tree

(A Christmas experience for children.)

Did you know that your Christmas tree has a name just as you do? Instead of being called John or Mary, it is called **Fir** or **Spruce**. The fir and spruce look so much alike that it is hard to tell them apart. Of course, they have leaves as other trees do. Only, their leaves are like little needles, and they keep their leaves all winter long. They do not drop them as other trees do. For this reason, people say they belong to the **Evergreen** family. This means they always stay green.

It would be clever if you could tell your friends at Christmas time whether your tree is spruce or fir. To find out for yourself, take one tiny needle off the twig. If the needle has been held by a curved peg, you can feel the roughness of the peg on the twig. Move one finger over the space. If the space is rough, you will know that the name of your tree is **Spruce**. When you look at the spruce twig through a magnifying glass, the space where the needles have been removed will look like a rough little peg.

If, when you take the needle off the twig, there is no peg left, but just a small circle with a dot in it, you will know that the name of your tree is **Fir**. Move one finger over the space and you will find it is very smooth. When you look at the fir twig through a magnifying glass, the space where the needles have been removed will look like a row of little circles.

After you learn to tell the name of your Christmas tree, you will have more fun discovering which of fir or spruce trees to be. And you will have more fun discovering which of fir or spruce trees to be.

The last few days of the month, Jews begin celebrating Chanukah, the Feast of Dedication. Chanukah, like Christmas, has become a holiday of joy, feasting and gift giving. However, it has a more serious connotation. After the Maccabees defeated the Romans under the leadership of King Titus, the Jews went to the temple in Jerusalem and started to cleanse and reclaim their center of religion. One of the first things they did was to re-ignite the Eternal Light which symbolizes God's presence in our sanctuary as he watches over us as he did our ancestors in days of old. They found a small cruse of oil, just enough for one day, but a miracle of miracles happened—the oil lasted for eight days until more oil was obtained. That is why we celebrate our holiday for eight days. Each day we put one more candle in our menorahs to remind us of the suffering of our ancestors, and the miracle of the oil.

This year Chanukah started at sundown of November 28 and lasted through December 6 at sundown. It is a holiday in which all Jews renew their faith and devotion to God for the deliverance of our ancestors and for His constant vigilance and source of strength for us today.

## ELECTION NEWS

Congratulations are in store for Freshman Officers at Lesley.  
Gail Roberts of Scituate—President,  
Frances Cooperman of Newark, N. J.—S.G.C. representative, Paula Rozom-  
ofsky of Everett—Vice President, Cor-  
rine Monastess of Medford—Secre-  
tary, Diane Sharp of New Haven—  
Treasurer, Rhonda Tinkoff of Fall  
River—Publicity Chairman.

Member of Florist Telegraph  
Delivery Association

**Kupersmith --- Florist**

Flowers for All Occasions  
17 BRATTLE ST., HARVARD SQUARE  
CAMBRIDGE 38, MASS.  
Telephone Kirkland 7-5442

Golden Retriever Puppies For Sale  
CHAMPION STOCK

WONDERFUL PETS

OLD LANCASTER ROAD  
SOUTH SUDBURY

**THE RINGS**

HI 3-2734



I WONDER . .

(Continued from Page 2)

We forget the spirit of simple friendliness (it is the diplomatic approach now), of spontaneous giving and sharing (known as Group Dynamics after January first), as we devote ourselves to causes — (or effect?). We place the unread books we received as gifts on the library table where they are so decorative and such good conversation pieces, but we steal our clichés to comment upon them from book reviews and digests. We do our utmost "to get over the effects of the holidays and back in the groove."

To each of us the holidays have represented a great event in our religious beliefs, a turning point which has affected our whole lives, past and present, and will continue long after we are gone. I wonder why we cannot take our lesson from this and each discover an element of timelessness for himself. Use the packaged mixes, kits, and abbreviations if you must — but not for really great and worthwhile things, please. Use the time-savers, if such they are — as a means of giving you time, not using your time, or passing your time, or filling your time. Would it not be a priceless thing for each of us to experience a sense of timelessness by having a certain amount of time each day, or each week, that would be irrevocably our own? How we use this time would be our personal choice.

For some it might be a chance to read those books, write those letters, or make those calls, long promised, on old friends. For others, it might mean listening to music, painting a picture, or writing creatively. Did you ever walk slowly at dusk in Copley Square, how is falling? The high time only by one, traffic, if fresh.

skyline as you over the Charles night? Myriad of lights, reflections, fantastic and beautiful silhouettes — London or Paris has nothing more beautiful to offer. These are but a few thoughts at random, but why should I make suggestions? Each of you has a dream, a catharsis of your own — if you only had the time. . . . Have a time for thinking, a time for evaluation, a time for reflection, a time for seeing. Most of all — have time! Let us keep in condition by not always taking the easy, or obvious way. Why not evaluate during the holidays and give yourself a gift of timelessness for the year, and always? And may it bring you satisfaction and Peace.

Happy Holidays,  
Dorothy E. Sharples

## Library News

The Committee for the Friends of the Livingstone Stebbins Library met for the first time last month on campus to decide issues relating to the future policies and direction of this group. The purpose of this organization is to stimulate interest in the Library, and to encourage financial and other support in the implementation of its material resources.

Members of the present committee are Dr. Leslie M. Oliver, Chairman, Dr. Ruth Boland, Miss Evelyn Singer, Miss Elizabeth Alexander, Faith Ginsberg, Helen Klahr, Lois Jenkins and Ann Cleveland.

I suddenly remember an acquaintance of mine, a serious and sensitive painter, who displayed an exquisitely painted and very beautiful piece of work to some of his friends. The first reaction from nearly all was "How long did it take you to do it?" The artist looked bewildered, for one does not measure beauty or creativity in minutes, or hours. He could not answer satisfactorily — so the final squelching evaluation of his work seemed to be, "Anyway I couldn't do it — I have neither the time nor the patience." There was no conception of talent or skill involved. Only one person in that group reacted in a different way. She had been standing apart silently for some time. Then she turned and said with great sincerity, "It's so beautiful, it makes my spine tingle." To the artist it was a comforting and satisfying comment, though it was not phrased in the accepted terms of culture and aesthetics. She had sensed his purpose, at least. Such reactions — few and far between — are instinctive outbursts of sensitivity.

Now it is winter and December again. The holiday season approaches for both Christian and Jew. It is a season of joy and light when symbolical candles gleam and stars shine more brilliantly in the indigo sky. It is a season of miracles when we take time to believe once more. We are as children — anything wonderful might happen. It is a season of renewal, of giving and sharing, of coming together in friendship and worship. Those of us who, through the year, survey our piles of mail with resigned acceptance can scarcely wait to open the stacks of greeting cards in familiar, or new, handwriting. We are accustomed to the special frag-

and I see usually still pains-takingly wraps and stacks mysterious packages. Expectancy, peace, and stillness slow our pace. Through this stillness, softly at first, and louder as the great day nears, we hear strains of music — carols and hymns of thanksgiving. They are on everyone's lips. Their spirit is reflected in everyone's eyes. Often the old familiar Appalachian carol, "I Wonder as I Wander" floats through the air. From it, I take my theme for these thoughts. I do wonder as I wander.

I wonder why we cannot capture more of this spirit of timelessness to carry through the rest of the year. I wonder why this spirit of mutual respect and understanding (must I call it tolerance?) cannot remain in our hearts? Why do we change so quickly as bells ring out the old year and in the new? Sadly, man's inhumanity to man is all too evident in some parts of the world at this very moment; but in our own world, we jump back on our merry-go-rounds of frantic speed as we don our mantles of impersonal busyness. Even those of us who object to the abbreviation of "Xmas" for Christmas once more busily dash off to the next meeting of the "X.X.W.Q.P." or the "N.E.A."

*Happy Holidays!*



## What Is The Who's Who

The idea of creating one national basis of recognition for college students that would be democratic and devoid of dues, initiation fees or other costs, was conceived about twenty-three years ago. And after much time and research the publication *Who's Who Among Students In American Universities and Colleges* came into print for the school year 1934-35.

The students received this publication from a national organization.

Each student receives a certificate of recognition awarded by the organization and presented at the school; recognition in the annual publication for the year during which he was selected in the form of a write-up of his college and personal record; and benefits of the Student Placement Service provided by the organization.

Be Sure To Go To  
**BRINE'S**

for  
Knee Sox  
Sweaters  
Blouses  
Skiis & Ski Wear  
Warm Sport Coats  
Gloves

**MANY CHRISTMAS  
GIFT ITEMS**

**10% Discount to Lesley**  
1346 Mass. Ave. Harvard Sq.

## JUNIORS AND SENIORS NOMINATED FOR WHO'S WHO

The Lesley faculty with Dr. Thurber's approval has nominated the following seniors and juniors for the *Who's Who*

**SENIORS:** Marjorie "Midge" Brenner, our active Student Government President transferred to Lesley in her sophomore year from Adelphi College. Some of her past activities include Student Govern-

ment, Treasurer, Dorm and Recreation Committee.

Linda Weisberg, Senior Class Representative to Student Government, has spent four active years at Lesley. As a member of the Glee Club she had one of the leads in last year's operetta *Iolanthe*. Linda is also Vice President of the Emerald Key Society, a Dean's list student, and a member of the Scholarship Committee.

**JUNIORS:** Maureen "Mickey" Green is the Freshman Class Student Advisor this year, Treasurer of the Junior Class and Editor of the *Freshman Handbook*. Some of her past activities include sophomore show, *Student Handbook* and Dean's List.

Audrey Belson is Editor of the *Student Handbook*, and in past years was Vice President of Student Government, Sophomore representative to Student Government, and on the Dean's list.

Edith Michelson, Editor-in-chief of the *LANTERN*, transferred to Lesley College from Ohio State University. Some of her activities include Emerald Key Society, Dean's list, *Student Handbook* committee, and the Sophomore show.

The *Lantern* extends its sincerest congratulations to these Lesley girls chosen for *Who's Who* in 1956-57.