

Lesley University

DigitalCommons@Lesley

Lesley College Current

Special Collections and Archives

Summer 1976

Lesley College Current (Summer, 1976)

Lesley College

Follow this and additional works at: https://digitalcommons.lesley.edu/lesley_current

Recommended Citation

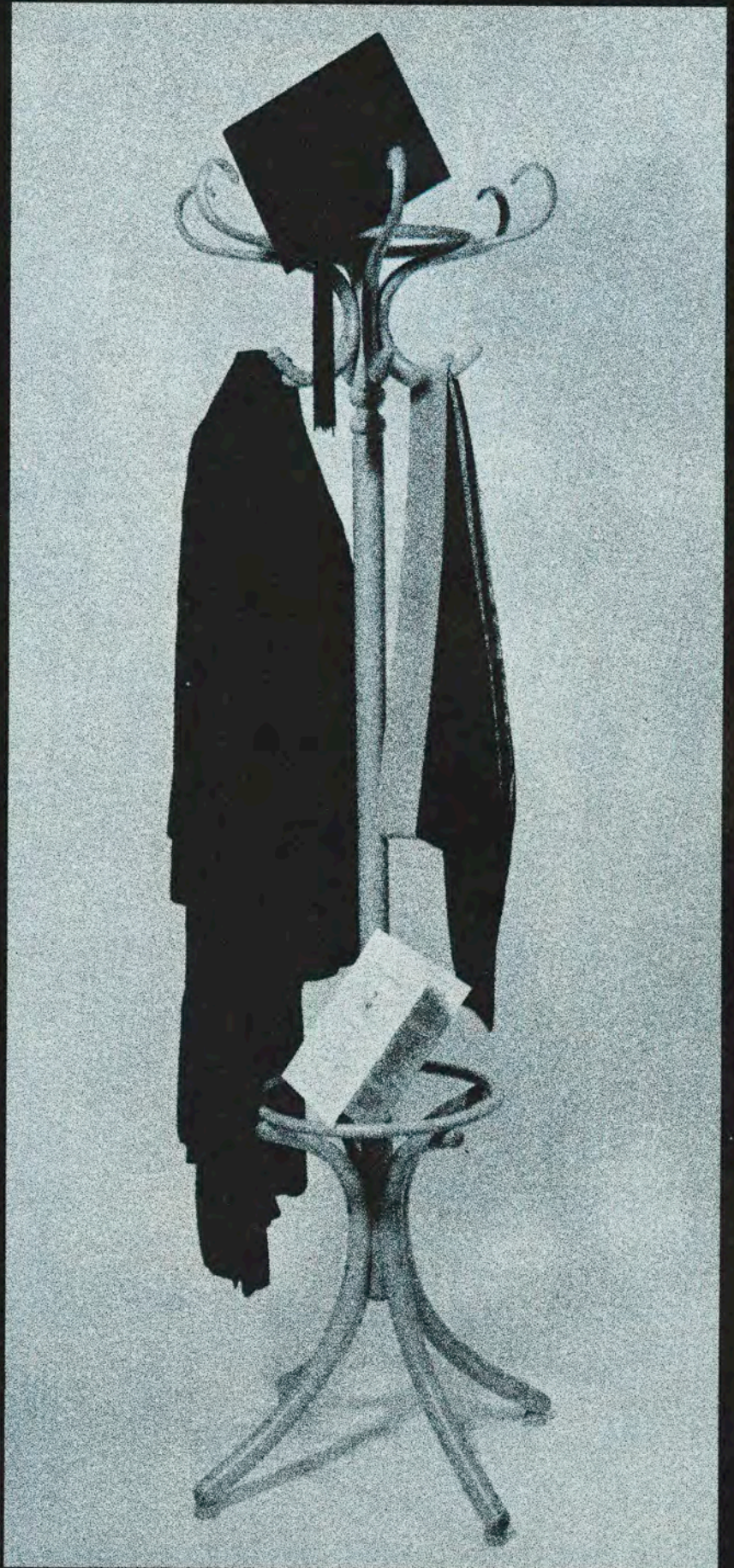
Lesley College, "Lesley College Current (Summer, 1976)" (1976). *Lesley College Current*. 27.
https://digitalcommons.lesley.edu/lesley_current/27

This Book is brought to you for free and open access by the Special Collections and Archives at DigitalCommons@Lesley. It has been accepted for inclusion in Lesley College Current by an authorized administrator of DigitalCommons@Lesley. For more information, please contact digitalcommons@lesley.edu, cvrattos@lesley.edu.

The Current

Lesley College

Summer 1976



The Current

Lesley College

Vol IV, No. 3
Summer, 1976

Mary Painter Bohlen, Editor
Leslie J. Aitken '73, Editorial Assistant

Joyce Marshall Snyder '61, Director of Alumni Programs
Simone H. Bloom, Assistant to Director of Alumni Programs

© 1976 by Lesley College

Published quarterly for alumni, parents and friends by the Office of Public Relations, Lesley College, 29 Everett Street, Cambridge, MA 02138. Printed by Howard Kirshen Printing Corporation, Boston, MA. Letters to the editor and manuscripts by, about and for Lesley women and men are welcomed and should be submitted to the editor typed double-spaced and marked with the author's name and address.

In this issue:

- 1 News of the Campus
- 4 Faculty Notes
- 5 Liberalizing the Liberal Arts
 - A look at the new minor concentrations
- 7 Alumni Currents
- 8 Alumni Profile in Courage
- 9 Reunion '76
- 10 Class Notes
- 14 Annual Fund Report, 1975-1976

On the cover:

Lesley College granted 147 undergraduate and 237 graduate degrees to the Class of 1976 on May 28. Cover photo is by **Brian P. Fullington**.

Photo credits:

Brian P. Fullington, cover I, 1; Julie O'Neil, 3, 9.

Thanks . . .

to all who completed the questionnaire about *The Current* in the spring issue. Your responses are helping to improve this magazine.

News of the Campus

Commencement

Dean of Students Miriam Ritvo presents the Edith Lesley Wolfard award to Laura J. Ahrens of Milford, Connecticut.



Instructors of Education Kathryn Morgenthau (left) and Rosemary Oliva (right) arrange the hood symbolizing the Doctor of Humane Letters degree for Mrs. Doris Birdsall, Lord Mayor of Bradford, Yorkshire, England. Mrs. Birdsall spoke on "Early Childhood, The Bradford Tradition."



Congratulating a master's degree recipient is President Don A. Orton.



For the Class of 1976, a new beginning.

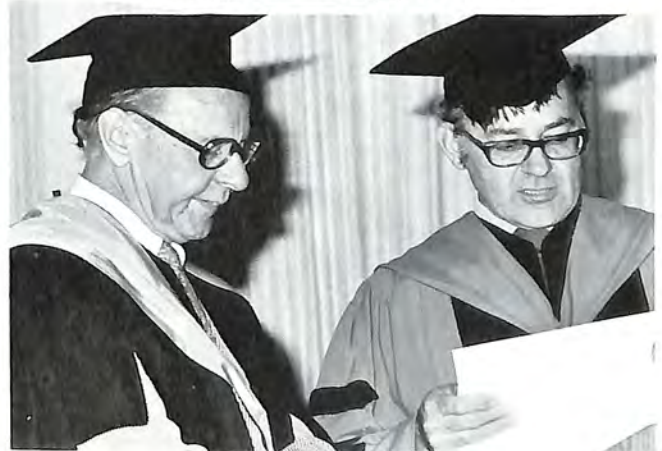
Cambridge Mayor Alfred Vellucci presents a special welcome to Lord Mayor Birdsall.



Approximately 1000 graduates, their families and friends fill Burden Hall in Allston, Mass., for the May 28 ceremonies.

Associate Professor of Music Elmer F. Benjamin listens as Professor of English David D. Honick reads the citation honoring the retiring Benjamin.

1976



Lesley Art in Israel

A painting by **Kim Mandy '78** of Manchester, Connecticut, is hanging in the American Embassy in Tel Aviv, Israel. Kim, an elementary education major with a minor in art, painted the piece entitled "Our Shalom" after she returned from a January Program dance-study tour of Israel. **Kitty Dukakis '63** accompanied the group of four dancers.



In her painting, she portrays an "American dancer sitting with a wise Israeli woman with the common bond of love held in their hands. The trees are spotted with colors of yellow and gold as they are in Israel," she says.

"The reflections in the foreground represent myself looking in retrospect upon the colorful spirit I felt during my visit. The spots of white light above the women's heads symbolize the sun and light of hope which always seem to be shining in Israel," she continues.

Mailing arrangements for the painting were handled through the office of Senator **Edward M. Kennedy** (D-Mass.)

Woman '76 Appearance

Lesley College student **Jeanne Amaral '78** of New Bedford, Mass., appeared on WBZ-TV Channel 4's Woman '76 Show May 12. Jeanne performed one of her original songs and talked about the Lesley Women's Festival with show hostess **Sharon King**.

Theatre Company Tours

Nine graduate students and faculty member **Iris Fanger** from the Institute for the Arts and Human Development formed the theatre company Playmakers II this spring. The group toured throughout Massachusetts during April and May with an improvised participatory show.

The show was designed for special needs children integrated into an audience of their peers. The first show specifically designed for such an audience, it incorporated mime, music, dance and drama.

Ms. Fanger, who originated and directed the company, says, "our goals for children were recognition, learning through participation and the joy of being entertained." Such concepts as self-image, body parts, space arrangement and the use of imagination were explored.

Participating in the show were graduate students: **Susan Bumagin**, **Priscilla Harmel**, **Karolina Illigen**, **Ilene Kell**, **Rachel Meshoulam**, **Amy Orser**, **Cathy Sillman**, **Sandra Simpson** and **Susan Yates**.

Outreach Conference Held

The Graduate School's Counselor Education Program sponsored an outreach conference on "Person to Person to Community" May 1-2 on campus. Professionals, para-professionals and interested persons came together to explore, share and evaluate ideas and issues surrounding services which "reach out" to persons and groups in the community.

Save the Dates!

Mark November 18 and 19 on your calendar for the 1976 New England Kindergarten Conference, sponsored by the Lesley College Graduate School of Education. This year's Conference will be held at the Chateau de Ville and Lantana's complex in Randolph, Massachusetts. For more information about the Conference, contact Professor of Education **Mary Mindess** at 868-9600, extension 161.

C.A.G.S. Approved

The Board of Higher Education of the Commonwealth of Massachusetts has granted approval for the Graduate School of Education to implement a Certificate of Advanced Graduate Studies Program.

Approved May 21, the program will begin full-scale in fall, 1976. It will become the highest degree program available at Lesley.

"The program is designed to meet the needs of mid-career professionals in education and related fields who wish to increase their competence and gain a broader understanding of the world of education and its social context," according to C.A.G.S. Program Coordinator **George E. Hein**.

Required courses in social and political issues make this program unique among those at other institutions of higher learning. These courses are designed to enhance professionals' understanding of the world in which their teaching is done.

Designed for persons with a master's degree, experience in education and the desire for mid-career renewal of their specialization, the program is open to both full-time and part-time students.

The Program stresses both theory and practice with opportunities for research and field work.

For more information about Lesley's new C.A.G.S. Program, call **George Hein** at (617) 868-9600, ext. 215 or write C.A.G.S. Program, Lesley College, 29 Everett Street, Cambridge, Mass. 02138.

Special Ed. Seminars

Graduate School Special Education faculty and students came together during spring semester for a series of Friday afternoon seminars. Topics shared included "adapting instruction to individual differences" and "career women and their babies." Guest speakers were brought in for some of the seminars.

Women's Festival Successful



The first annual Lesley Women's Festival on May 12 drew large crowds for the panel discussion on "Lesley: Women's College or Girls' School?", and outdoor barbecue, folksinging and a film festival. Students, faculty and staff members and administrators participated in the day's events, which were sponsored by the Spokeswoman Series.



Faculty Notes

Doing

Diane Levin of the Graduate School faculty is working as a consultant for the Organization for Economic Cooperation and Development in Paris this summer. She is preparing a report on the role of the innovative teacher in an innovative American school.

Summer activities for Associate Professor of History **Paul Fideler** include acceptance of a fellowship to a summer institute on the "new history" at the Graduate School of The City University of New York. Focus of the institute is on the methods and capabilities of quantitative history and on the applicability of psycho-history techniques to childhood history research.

Margery Staman Miller, Assistant Professor of Education, has been awarded her doctorate from the University of Pennsylvania.

Serving as representative from the Massachusetts Association of Teacher Educators to the Executive Council of the New England A.T.E. is **Jennifer Page**, Division Head for Education. Jennifer was elected at the N.E.A.T.E. annual meeting May 6-8 in Kennebunkport, Maine, where the topic for discussion was "Alternative Careers in Teacher Education."

Norma Canner of the Institute for Arts and Human Development faculty led a workshop on transformations in movement using movement, sound and masks for the New England Dance Therapy Conference April 24-25. Held in Keene, N.H., the conference was sponsored by the Antioch College Dance Therapy Department.

Nancy Roberts, Graduate School faculty member, was one of 15 people from college faculties across the country chosen to participate in a June workshop funded by the National Science Foundation. Located in Colorado, the workshop attempted to develop a curriculum guide for an undergraduate course on the use of computer simulation models of large scale social systems.

Biology Instructor **Neil Todd** was the subject of a recent full-length article in the *Washington Star*. He was interviewed about his research on the domestic cat. On May 14 he appeared as a guest on the Canadian Broadcasting Company's morning TV interview show, talking about his research on the domestic cats of Canada.

Speaking

Graduate School Assistant Dean **Lenore D. Parker** participated in the International Reading Association's 21st annual convention in Anaheim, California, May 10-14. She spoke about "Reading the Illustrations in Children's Books" during a session on early reading skills.

Presenting a paper at the annual meeting of the National Council of Teachers of Mathematics in Atlanta, Georgia, was Associate Professor of Mathematics **Mark Spikell**. His topic was "Integrating Aspects of Mathematics in Science." Mark will return to the Lesley campus in fall, 1976, after a one-year sabbatical leave at Boston University.

Stanley Klein of the Graduate School faculty participated in a panel on the "Role of the Media in Advocacy" at a late March meeting on the rights of people with disabilities. The meeting was sponsored by The Center on Human Policy, Division of Special Education and Rehabilitation, at Syracuse University in New York.

Director of the Institute for the Arts and Human Development **Shaun McNiff** was the keynote speaker for the sixth Early Childhood Symposium in Peabody, Mass., on March 24. He has also developed an unique program for the development of visual perception for special education learning disabled students. "Looking at Art" seeks to engage students in the analysis of the great works of art through film strips, an extensive teachers' guide, teachers' worksheets and suggested activities.

Graduate School Assistant Dean for Special Education **Jill Hamilton** was the keynote speaker at a May 19 New Hampshire conference for children with special learning problems. Sponsored by the Capital Area Special Education Services Consortium, the conference was held at the Winnisquam Regional Middle School in Tilton, N.H.

Writing

Arts Institute faculty member **Elizabeth McKim** has written an essay on teaching poetry writing that is included in a new publication *Poemmaking: Poets in Classrooms*, a publication of the Massachusetts Council of Teachers of English. Poet McKim's piece is entitled "What Does a Poet-in-Residence Do?" in which she describes her year as such in Brockton, Massachusetts.

Graduate School faculty members **Rebecca Corwin**, **George E. Hein** and **Diane Levin** authored an article in the March, 1976, issue of *Childhood Education*. Their topic was "Weaving Curriculum Webs: The Structure of Non-linear Curriculum."

Liberalizing the Liberal Arts

by Paul Fiderer

Introduction

We want our graduates to be competent not only in their professional skills but also in the art of general inquiry into self and world. We hope that their college studies will help them to become more humane and discerning human beings.

Lesley College Ad Hoc Curriculum Study Committee, *Curriculum Change Proposals*, (January, 1973), p. 26.

One reason Lesley College prepares competent teachers and child-oriented specialists is the emphasis placed on general life preparation in the College's curriculum.

We realize that professional competence requires not only demonstrable skills but also a range of intangible qualities, attitudes and knowledge that characterize all truly valuable human endeavor. The liberal arts program at Lesley College helps to sharpen students' awareness and capabilities so that professional commitments can grow.

While Lesley's commitment to the liberal arts has been significant and continuous, in recent years it has been necessary to reassess their role, their performance and even their relevance. The leveling-off in enrollments combined with rapidly increasing operating costs produced at Lesley, as at virtually every campus, the need to set priorities to insure institutional survival.

Lesley, as a teacher preparation college, faced (and continues to face) the additional challenge of a shrinking employment market for its graduates. As institutional priorities were sought, the needs of professional skills for employment and those of the liberal arts began to seem irreconcilable.

Our response to this potential dilemma, however, was to continue to seek as high a standard of professional and general life preparation as is possible.

Two developments within the liberal arts ensued. The first was an emphasis on alternative career possibilities inherent in liberal arts studies. The Child and Community major (see *The Current*, Spring, 1975), which requires a minor concentration in a liberal arts area and prepares students for a variety of child-centered professional work outside the classroom, is one important move in this new direction.

The second was a commitment to interdisciplinary studies and the attempt to make liberal arts relate more directly and unequivocally to the crucial yet puzzling issues we all face today. This has led to the design and implementation of new courses and minor concentrations.

In essence a liberal arts resurgence is underway. It is motivated by the confidence that the transitions and uncertainties in society that necessitate a new emphasis for the liberal arts make their input in the undergraduate curriculum more crucial than ever.

In the following reports, we take a closer look at emerging programs and courses in the History and Social Values, Fine Arts and Environmental Studies minor concentrations.

History and Social Values

by Paul Fiderer

For the past three years, the historians on the undergraduate faculty at Lesley: Marjorie Wechsler, Michael Fosburg and myself, have been working on changes in the history program that would stress history's capability to help us understand the present.

In 1975-76 the minor concentration "History and Social Values" became part of the undergraduate curriculum. It explores "the human effort, both in the present and in the past, to discover and express the value and meaning of life in society," according to the 1976-77 undergraduate catalog.

More specifically it provides students with the opportunity to examine the development of attitudes, values and institutions that underpin many of our vital concerns today.

In a research seminar, students are introduced to the growing diversity of historical research methods available to historians. They must complete two more courses, Foundation of American Institutions and Culture and Humanities Survey, for a core of three required courses.

Each student designs the bulk of her program by selecting three additional courses in history and one from such disciplines as biology, drama, English, sociology, education, music and philosophy.

The history offerings include courses on the ethnic experience in America, family and childhood, poverty and poor relief policy, social change, American foreign policy and dissent and reform movements. Possible courses in women's history and the history of education are being considered.



Paul Fiderer, Associate Professor of History

Insight into the core issues of these courses is deepened by utilizing materials from a variety of academic disciplines. Through this interdisciplinary approach, we intend to minimize the emphasis on "names, dates and battles."

Students may opt to substitute internships and field placements for the traditional research term paper in some courses; such experiences may also have later employment potential.

It is our hope that the History and Social Values minor concentration will provide an innovative, credible and useful response to the challenges facing Lesley College and its graduates.

Fine Arts

by Edmund Ostrander

"I want to take a pottery course, but I'd better enroll in 'Children with Learning Disabilities' if I want to be impressive in my job interviews," is a common line echoed by college undergraduates today.

But efforts by the fine arts faculty at Lesley College have made this statement increasingly obsolete, for a new minor in fine arts combines the "best of both worlds." Students at Lesley now can more easily enroll in fine arts courses while completing degree requirements.

Concerns over the immediate job market and strong suggestions in the academic catalog about enhancing "chances for professional employment" have resulted, I believe, in a rather one-sided enrollment pattern at the College.

For their elective course work, the vast preponderance of students at Les-

ley choose courses relating to education, especially special education. Nonetheless, selection of free electives, i.e. those courses not relating directly to minor concentrations, has indicated strong interest in areas such as music, art and drama.

To solve this inconsistency and also to give students the opportunity for a more "liberal" education, the Fine Arts Concentration was conceived and introduced in the 1975-76 catalog. Faculty members in art, drama and music supported and helped to design this concentration.

The concentration's major purpose is to provide additional and more diversified experience in art, drama or music with an emphasis on performance. There is a basic core requirement in the history and aesthetics of these three disciplines; after completion of this, the student is free to concentrate on one of the three areas.

The design fosters an amalgam of the theoretical and practical; we believe an artist learns by doing his/her craft.

The drama concentration requires training in dance as well as acting and directing. Students choosing music must display vocal or instrumental proficiency. Art requirements include achievement in either painting, pottery or photography.

This creative training will undoubtedly prove valuable in a number of fields including teaching. Courses in children's theater are being considered and should be offered in the near future within the concentration.

It is difficult to anticipate job needs five years down the road, but it seems logical to assume that future jobs will need adaptive people with creative artistic training.

Environmental Studies

Acquiring knowledge and experience in field biology, the structure and function of ecosystems, air and water pollution and the problems of rapid population vs. dwindling energy and food resources is the goal of students enrolled in the Environmental Studies minor at Lesley.

Such knowledge provides a grounding in ecological science, with particular emphasis on how it relates to the survival of mankind. It should also provide impressive credentials for future employment as a natural science teacher and/or resource person, according to Assistant Professor of Science **Bennett Blumenberg**, Environmental Studies leader.

Graduates with this minor may seek placement as field or lab technicians with educational departments of zoos and museums, private ecology organizations, governmental agencies concerned with the environment (E.P.A., Interior Dept., etc.) and university-sponsored research projects.

Currently 12 students are minoring in Environmental Studies. One particularly interesting project was completed by **Kathleen Ford '77** during her 1975 January Program. At the Marine Biology Laboratory of Fairleigh Dickinson University in the Virgin Islands, she was part of a team that completed a complex field project on the structure of coral reef algal communities. She competed successfully with biology majors from all over the country.

Other student projects have involved a study of proposed federal ecology legislation, a survey of environmental attitudes in northern Boston suburbs, observation of science teaching in public schools and an experimental simulation of the effects of drought upon the important world food crops.

One required course (Biology 390 — The World System) involves students in completing a project on the state and/or federal legislative process as it affects ecological law-making. This course is one of a series of electives from which History and Social Values minors must choose.

This interface between two minor concentrations, one in the sciences and one in the social sciences, is extremely important and serves to emphasize the manner in which ecological problems now affect social and political systems as well as individual lives.



Ed Ostrander, Associate Professor of Music

Alumni Currents

Wanted: Alumni Talent

Ed Ostrander, Associate Professor of Music; Al Brower, Associate Professor of Speech and Drama; and Kitty Dukakis '63, Lecturer in Physical Education, invite alumni who were members of the Collegium Musicum, Drama Club and/or Modern Dance Group to again participate in these groups. For further information about their upcoming programs, contact Ed, Al or Kitty at the College.

Alumni are also invited to submit art work or photography for the cover of *The Current*. Inquiries and submissions of material should be addressed to Editor, *The Current*, Lesley College, 29 Everett Street, Cambridge, Mass. 02138.

Growth Options Explored

By popular demand, the Alumni Association sponsored a second seminar on "Exploring Alternatives for Personal and Professional Growth" on April 1 in Alumni Hall. Representatives from Wheelock College and Wider Opportunities for Women joined 14 Lesley alumni for the day.

Participants enjoyed learning about continuing education opportunities available in the Boston area from Peter von Mertens, Assistant Dean for Continuing Education, and job hunting and resume writing from Donna McGrath, Director of Placement at Lesley, and Assistant Director Joanne Scheuble. Director of the Administrative Careers Program Jeanne Speizer discussed career planning and development opportunities available to Lesley alumni.

Comments about the day included: "It was well-focused, gave lots of information and left room for reflection and self-analysis. A wonderful day," and "Can't say enough about the whole day — it was super."

Volunteer Services

Organized

Elaine Bernstein Berman '68 is now Coordinator of Volunteer Services for the Alumni Office in Cambridge. In her new volunteer capacity, Elaine is assisting with the recruitment of class agents, regional representatives and class secretaries. She is also spending several days each week at the Office assisting with a variety of clerical responsibilities.

Elaine has served as a regional representative for the Woburn area, chairperson of the 1976 Ad Book Committee, a member of the Association's Board of Directors since 1975 and co-chairperson of the Council of Regional Representatives. Many alumni will be familiar with Elaine through her active participation in Association programs and events.

Alumni interested in updating their business and management skills and learning office procedures by working for Lesley's expanding Alumni Association should contact Elaine. Flexible schedules and complimentary lunches in a stimulating college environment are included. Write: Elaine Bernstein Berman, Coordinator of Volunteer Services, Alumni Office, Lesley College, 29 Everett St., Cambridge, Mass. 02138.

A Votre Service

In cooperation with the Lesley College Graduate School of Education, the Alumni Association offers 10% discounts to alumni enrolled in regular three-credit Graduate School courses. The discount is limited to no more than two regular three-credit courses per semester. Vouchers are available in the Alumni Office or may be completed when registering for a course. Effective September, 1976, vouchers must accompany registration forms.

Cabot House Hosts Alumni

Sixteen Lesley alumni attended the April 27 home decorating workshop at the Cabot House in Burlington, Mass. Interior decorator Richard Cox gave an informative presentation on color and coordinating rooms with rugs, fabrics and wall treatments to achieve a professional look. Opportunities to ask questions and browse through rooms of Drexel Heritage furniture were also available.

Regional Get-togethers

Draw Alumni

Thanks to the excellent organization of Merrimack Valley Regional Representative Nancy Mellen Meehan '65, 30 alumni living in the Merrimack Valley area enjoyed a dinner meeting at the Vesper Country Club in Tyngsboro, Mass. Following the April 1 dinner, Mrs. Paul G. Anderson of Leiter Designer Fabrics presented a program combining flower arrangements and fabrics.

Jeanne Speizer, Director of the Administrative Careers Program at Lesley's Graduate School of Education, spoke with Framingham area alumni on May 3. Over coffee and dessert at the home of Ellen Green Bloch '61, Jeanne discussed opportunities for career development and planning.

Alumni Profile in Courage

Barbara Shinn '51

by Jo Malva '49, '60G



Barbara Shinn, '51

One of the finest experiences in life is to have the good fortune to meet and to be influenced by another person whose cheerful, wise and considerate ways one seems to recall even years later. Barbara Shinn, who attended Lesley College during the years 1950 - 1951, was such a person.

I am certain that those alumni who knew her during this period, even though it was 25 years ago, feel the same as I do. She had a genuine concern for all her classmates and was truly interested in Lesley College. When I learned of Barbara's death in April, 1976, my thoughts were those of deep gratitude that I had had the privilege of knowing her.

In 1951 Barbara received from Lesley College a BS in education, with honors. She had previously attended Parsonfield Seminary in Maine.

Barbara served for four years as assistant to the late Dr. Walter F. Dearborn, professor of psychology at Lesley. Later she taught at North Shore Country Day School in Beverly, the Cambridge School in Weston, St. Sebastian School in Newton and the Eaglebrook School in Deerfield (all in Massachusetts). Trained in the administering and evaluation of intelligence and achievement tests, she was a professional psychometrist.

Barbara also worked at the language clinic at Massachusetts General Hospital. She was a member of the Association of Remedial Teaching, the National Association for the Advancement of Colored People and the Social Responsibility Committee of the First

Parish Unitarian-Universalist Church in Arlington where she helped to sponsor a young Vietnamese child.

For the past 30 years she taught from her home.

In 1958 I visited Barbara in her home and she explained her tutoring program for children with learning disabilities. She had such high hopes for each of her students. The word "drop-out" was not in her vocabulary. All students who entered her door on Florence Avenue in Arlington, Mass., were soon so involved with her inner magic that they found the strength and purpose they had been seeking. All of us in the teaching field have the dream of reaching children in this way, but it takes a special mixture of ingredients to succeed. And Barbara really did succeed.

During most of her life, Barbara suffered from arthritis of the spine. In 1963 it was necessary for her to have an operation which left her unable to sit. She spent the rest of her life either standing or lying down. Barbara had the courage and inner strength she needed to try to live as normal a life as possible; she even managed, with the help of a stretcher, to get out to the local voting booths on Election Day.

During Lesley's building campaign Barbara worked hard, contributing many telephone hours to help raise funds for the College.

Barbara will be missed by many. Her dedication and determination in the field of education leave us a challenge to carry forward.

Reunion '76



Members of the Class of 1926 who celebrated their 50th reunion are (left to right): (front row) Helen Ewing Holmes, May Hogan, Nora Mullarkey, Elizabeth Foye, (back row) Gladys Pollet Young, Adah Lassone Hill, Dorothy Cushing, Mildred Capodieci Barberio and Kathleen Finnegan.



Left to right, Alice Maguire O'Sullivan, Hedwig Nemerowski Swiderski and Bessie Marjorie Grinnell O'Toole represented the Class of 1936 at their 40th reunion.



Class of 1961 members who participated in their 15th reunion are (left to right): (front row) Shirley Spiegelman Horvitz, Della Rose Gilman, Roberta Caras Fishman, Golda Siegal Doyle, Ellen Green Bloch, Susan Silverman Adler, Susan Lampert Burg, (back row) Barbara Streiferd Gladstone, Peggyann Evans Harris, Joyce Marshall Snyder, Jackie Fand Glantz, Sue Hruska Nagler, Eda Weinberg Stepper, Jeanette Hobbs Valence and Janet Kaplan Laine.



Hazel Ross '21 enjoyed her 55th reunion.



Professor of Early Childhood Education Mary Mindess received the Alumni Award at Reunion '76. Also honored were Barbara Wickson, Administrative Assistant to the President, and Elmer Benjamin, retiring Associate Professor of Music, who were made honorary members of the Alumni Association.



Receiving an Alumni Recognition Citation is Kitty Dukakis '63. May Hogan '26 also received a citation.

Space limitations prevent us from including all Reunion '76 photos. Watch for more photos, including those of reunion classes 1956, 1966 and 1971 in the fall issue of *The Current*.

Class Notes

'16

Dorothy Hartings Trefry celebrated her 80th birthday last year. Her husband James passed away in November, 1972.

'21

Jean LaMont is retired from the Browning School in New York City, NY. . . . Helen Cutler Laing lives in Brattleboro, VT, with her husband George, a retired assistant high school principal. Helen taught 1st, 2nd and 3rd grade from 1921-28. She has two children and seven grandchildren.

'24

John and Frances Sinnett Snell spent eight months in their home in Venice, FL, and four months in their apartment in Augusta, ME. The Snells have enjoyed several wonderful trips since their retirement; this year they went to Alaska.

'25

Marie E. Bulger (Sister Edwardus Bulger) is a director of early childhood education at Aquinas Jr. College in Newton. She started the program five years ago. Prior to that, she was Ives Superior principal and opened five schools and three new kindergartens. She was also a remedial reading teacher and ran several kindergarten workshops. "I have enjoyed my teaching career," she says. "I was out of Lesley for 50 years last year and will be in religious work for 50 years in 1978." . . . Mary S. McCarron Mead writes that she and her husband Frank are enjoying retirement in Marion, MA, and in Florida during the winter.

'26

Kathleen MacBeth Dowd is a widow with three children: Kathleen Murphy of Chelmsford, a title examiner for the Middlesex Co. (MA) Engineering Dept.; Thomas F. Jr. of Trumbull, CT, V.P. of Bridgeport Hydraulic Co.; and Mary Agnes Meglaski of Nashua, NH, assistant manager of Indian Head Bank . . . Madeline Wallace Ward and her husband Hamilton are retired in Florida. They enjoy visiting their four sons and 13 grandchildren . . . Madeline Mary Lannin teaches at the McCulloch School in North Weymouth, MA. . . . Rosamond Hawkins Harrison teaches at the Six Acres Nursery School in Medfield, MA.

'27

Dorothy Hassley Boyle is "still real-estating" in Washington, DC, and nearby Maryland. She has been a widow since 1969 and "can't seem to find a worthy replacement." Dorothy keeps wondering where all the years went.

'29

Helen Mather Benjamin has moved back to Brimfield, MA, after 20 years in the Boston area. She spent three months in Florida, but she is now back to small-town living . . . Amelina Jennings is retired after teaching 42 years in New Bedford, MA. . . . Katherine Fernald Bruce writes from Milton, MA, that her daughter Violet Converse Bruce married a marine lawyer in London in 1975 and now lives in a Richmond, Surrey, home overlooking the old Royal Deer Park. Violet is a buyer at Goode's in London, and her husband travels around the world on business. Katherine's two sons, Barton Fernald and Manton Burbridge, became fathers in July, 1975, and Katherine now enjoys all five of her grandchildren. . . . Priscilla Wildes Kennard has had two cataract operations, and since her husband died in October, 1974, she has been living alone. Priscilla's daughter, son-in-law and five grandchildren live in Salt Lake City, UT, where her son-in-law is an architect. Her sister, Elizabeth Wildes Ashton '33 lives in Syracuse, NY, and visits Priscilla often.

'30

Leslie and Bertha McConnell Foster and Harry and Eleanor Smith Cutting '29 recently returned from a trip to the South. The foursome will be in the British Isles this fall . . . Evelyn Ford has retired after 42 years in Mass. Social Service working with children and families, the elderly and the handicapped. She worked as a social worker and as an administrator locally in Quincy, MA, then regionally and statewide. Evelyn was also the administrator of staff for a state hospital and on the central office staff. She is a Mass. member of the National Association of Social Workers and the Academy of Certified Social Workers. She received an M.S. in social science from B.U.

'31

Sr. Mary Frances Killilea, SND, teaches at the St. Monica School in Methuen, MA. . . . Alice Robertson Dolan has never taught, but she has just completed her 32nd year as an American Red Cross Gray Lady. Twenty-nine years were spent at Valley Forge, PA, Army Hospital. She then worked at the Phoenixville Hospital near Devon, PA, where she now lives . . . Gladys Canfield Frost retired in 1972 after 32 years of teaching experience in nursery, kindergarten and first grade classes.

'32

Katherine B. Concannon teaches grade 2 at the McAvinue School in Lowell, MA. . . . Kathryn Coffey Glennon is a first grade learning disabilities teacher in a contained class in New Bedford, MA.

'33

Frances Card Streeter teaches at the South Road Elementary School in Wakefield, RI. . . . Gertrude Guimond Morrison retired February 28, 1975. She taught kindergarten at Connecticut Institute for the Blind for six years and mentally retarded children at Mansfield State Training School, CT, for 14 years after receiving her degree at the University of Hartford. Her husband passed away in October, 1973, and she has three children and 13 grandchildren. . . . Marguerite Rienstra Cleverly retired in June after teaching special education for 20 years in Whitinsville, MA. . . . Charlotte Hopkins Cummings is teaching in Berlin, CT.

'35

They met as freshmen at Lesley in 1932. After graduation in '35, they later married and reared families. Through all these years they have remained close friends and kept in touch. In 1958, one of them underwent open-heart surgery. In 1972 the other survived a triple cardiac by-pass. Both Gertrude Carroll Geddes and Doris Herlihy McNicholas are alive and well and living in Providence, RI, and Wakefield, MA, respectively. They are wondering if any other member of the class of '35 has a 'mended heart' also.

'36

Helena G. Cavanaugh Dowd Austin recently re-married after being widowed for 15 years. Her husband, Charles Austin, is a Dartmouth College graduate and an administrator of a nursing home. Helen has seven children and seven grandchildren and lives in Portland, ME.

'38

Margaret Mulligan Fulton is retired from Millbrook Elementary School in Millbrook, NY.

'39

Arlene McLaren is head teacher, grade 6, at the Hole School in Everett, MA. . . . Eileen O'Leary O'Loughlin teaches in the Boston School department. . . . Anna Olson Watson teaches at the Edgecomb Central School in N. Edgecomb, ME.

'41

Howard and Constance Hovey Zea went on a two-week trip to the Hawaiian Islands. Howard is a member of the International Institute of Municipal Clerks, and this year's meeting was in Honolulu. Howard and Constance celebrated their 25th wedding anniversary on April 21.

'45

Natalie Saltmarsh Haas teaches kindergarten at the Horace Mann School in Melrose, MA.

'46

Lois Loud Sylver writes that two of her three children (two daughters and one son) are married, and her youngest daughter expects to wed next June. Lois has two grandsons: one will be two years June 18, and the other will be one year June 15; they help keep things busy. Lois is also school lunch program director of the Dennis, MA, Schools.

'47

Betty Rauch Brensinger's son David is a music major at West Chester State College, PA, class of 1977. Son Larry is a 1976 graduate of Ridley, PA, High School.

'50

Natalie Crossland Trask teaches in the Barre, VT, City School System.

'51

Jean Hoffman Hart teaches at the Baines School in E. Hartford, CT. . . . Edith Streechan Cross teaches in Springfield, MA.

'52

Joan Flentje Forsyth teaches at the Bishop School in Arlington, MA. . . . Ann Hoffman Sullivan's daughter Pam is a freshman at Regis College majoring in biology. Pam made the Dean's List the first semester. . . . Dorothy Saltgaver Russ teaches fourth graders at the East Dover (DE) Elementary School.

'53

Sylvia Cohen Brown volunteers for the American Cancer Society of Middlesex Co., NJ, and the Jewish Federation of Northern Middlesex Co., NJ. The Browns have two sons: David (18) is a freshman at Oberlin College, OH, and Alan (17) is a junior at the Pingry School in Elizabeth, NJ. . . . Blanche Webster is retiring in June after 25 years of teaching kindergarten in Winchester (MA) at the Washington School. . . . Elizabeth Knights Thomas is a classified librarian at the Avenue B. Elementary School in San Manuel, AZ.

'54

Anne Morrison Fioravanti teaches kindergarten in Saugus, MA. The Fioravantis have three sons: one is a junior at the University of Massachusetts, one will be attending Fairfield University in the fall and the youngest is in junior high in Saugus. She writes that all are well and happy. . . . Claire Donovan Wadsworth sends her best to all and writes that she would like to hear more from the class of '54.

'55

Mary Giblin Cogswell's son John, Jr. is now a fourth grader and a great sportsman with the hope of being a pilot someday. The

Cogswells travel summers and get to Miami, FL, frequently, where John's twin brother lives. Mary writes that she loves the sand and surf. When she isn't traveling she teaches grade 3 at the Kennedy School in Cambridge, MA. . . . Mary Carew Dyke teaches 8th and 9th grades at Mt. Blue Junior High in Farmington, ME.

'56

Patricia Cates teaches at the John H. Fuller Elementary School in North Conway, NH.

'57

Elizabeth Tewksbury Ham teaches at the Dalrymple School in Winthrop, MA. . . . Barbara Bufferd Rashba is substituting in a private school near Orange, CT. . . . Elizabeth Fleming McMorro teaches at the Breen School in Lawrence, MA. . . . Kathleen Carroll Maggelet teaches in Wakefield, MA.

'58

Fredrika Van Vleck Cox's son David will be a freshman at Bowdoin College in the fall. . . . Beverly Wine is the professional name of Beverly Roman Wall, who lives in Natick, MA. She is a tennis professional at the Natick Racquet Club and Fairway Pool and Recreation Club. . . . Anne S. Segal '58G is the assistant principal of the Lebanon, NH, elementary schools.

'59

Maureen Ingoldsby Clark has three children: son Colin (7), daughter Hilary (4), and son Jonathon (2). . . . Katherine M. Donovan '59G is seeking re-election to a four-year term as Essex (MA) County Commissioner. Kay was first appointed and then elected to complete the term of her late husband William. . . . Joan Paresky Chernoff lives in Burlington, VT, and works as a substitute teacher. She taught grade 1 in Sudbury, MA, from 1959-60 and was primary teacher for the Burlington Schools Learning Center in 1975. . . . A vocational counselor and consultant, Virginia Arbuckle Born '59G lives in York, Maine. She and husband Conrad are the parents of George (11) and Chris (14). Virginia taught first grade and did library work prior to her marriage in 1961. While her husband was in the Coast Guard, she lived in Rhodes, Greece, for two years. Her husband is a systems analyst for the University of New Hampshire where she returned to school in 1972. Virginia says she is getting interested again in special ed. (handicapped), women and vocational concerns and is working on a suggested up-to-date counseling curriculum. She thinks "Lesley was, is great!"

'60

Mike and Lorraine Smith LoGrande spent a month at Christmastime touring Europe

with their three children: Michelle (13), Michael (12) and John Blake (7). Lorraine is a substitute teacher in Hauppauge, NY.

'61

Sandy Prager Singer is a Title I Reading Specialist at the Lincoln School in Natick, MA. . . . Shirley Spiegelman Horvitz is working with a realty company in Houston, TX. . . . Susan S. Whitney was married to A. Russell Atwater III in 1972, and they are now the parents of A. Russell Atwater IV (2). Susan taught 6th grade in Reading, MA, and moved to Wilmington, DE, where she taught pre-school for the Salvation Army. In 1971 she founded and directed a day care center for the Salvation Army and served as president of Delaware Day Care Directors Association from 1972-73, representing 52 day care programs. She was Director of Social Services for the State of Delaware Salvation Army before moving to Pennsylvania. She is presently Human Services Director for the Chester Redevelopment Authority in Chester, PA.

'62

Jerry and Barbara Roffman Wider and their three children: (Todd (12), Jedd (8½) and Jennifer (3½) live in Stony Brook, NY. Barbara is working in real estate and Jerry is practicing obstetrics and gynecology. . . . Janet Robertson '62G is a free-lance writer. . . . Judith Rosen Rothenberg is a learning disability specialist at the Oak Hill School in Newton, MA. . . . Walter and Marcella Harrington Haviland have adopted a little girl, Melanie Lynne. She arrived from Korea on Valentine's Day and is 3½ years old. They also have a son, Russell, who is 8½ years old. . . . Marian Horvath McGee is a K-6 substitute teacher in the Sachem, NY, School District. . . . Arlene Wilson Wiggetman '72G is a Title I remedial reading teacher, working in both the preventive and corrective reading areas, in the Lynn, MA, School System. Arlene has three children: Abby (11), Andrea (8) and Joseph (5). . . . Brenda Rawding Pillette lives in West Haven, CT, and teaches grade 3 in a follow-through program in Hamden, CT.

'63

Maxine Bunch '63G teaches for the Seattle, WA, public schools. . . . George and Pamela Nevins Kirk have five children: Skip (15), John (11), Tom (9), Jane (7) and Peter (5). They live in Portsmouth, RI. The Kirks are involved in sailing, hockey and scouting activities the year round. Pamela served as book fair chairwoman and chairwoman of the education committee for the Newport, RI, branch of the American Association of University Women. She plans to do volunteer work with schools next year.

'64

Diane Schaffer Lewinstein is working for the Rhode Island Department of Education.

'65

Richard and Martha Grossman Sholes are kept busy by their three children; Nancy (7) is in the second grade, Michael (4) eagerly awaits kindergarten and Ethan (17 mos.) is at home with his mom. . . . Lynda Govoni Beane started a nursery school in September '75 called the "Bean Pod." She loves it! The children are ages 4 and 5, are great fun and are eager to learn, she says. . . . Sharon Leach Bond teaches in the Norwood Public Schools. . . . Betsy Burnes McCarthy is an assistant professor at Assumption College and a psychologist in Worcester. She is working on her doctoral dissertation at Clark University. . . . Steve and Carol Brainerd Roberts still live in Amherst, NH, with their three daughters: Becky (9), Jessica (7) and Jennifer (2). The Roberts added two large rooms to the house to alleviate crowding, and they plan to stay there. Carol keeps busy as a homemaker/mother, and she has many outside interests, too. . . . Joan Tether Serdensky and husband John have two daughters: Julie (5) and Janice (2). Joan does private tutoring for special needs children. The family lives in Canton, MA.

'66

After four years as an editor at *Reader's Digest* in NYC, Patricia Egan McCarthy, now a free-lance writer, moved to Chapel Hill, NC, only to discover that nearly everyone in town is from New York or New England! She is presently editing a newsletter for the Medical School at the University of North Carolina. Her first series of feature stories appeared in local newspapers this spring. Patricia would love to hear from other 1966ers. . . . Diane Abraham Sawyer teaches in the Barnstable Middle School. . . . Susan Brown Smith '66G is involved with Walking Historical Architectural Tours, which she organized in 1974 for the Philadelphia, PA, Bicentennial celebration. . . . Carl and Lois Sludsky Feldman moved from Peabody to Simsbury, MA, last August. Carl is sales manager for Wetzell Tool Company. Michelle (7) and Jill (3) complete the family. . . . Barbara Cleveland is director of a day care center in Orland, ME.

'67

Galen L. Deming teaches at the Mitchell School in Wethersfield, CT. . . . Marty and Ellen Tillis Rich, are living in Houston, TX, with their two sons: Eric Scott (6) and Craig Michael (2½). Marty is now self-employed selling bottled water. . . . Sandra Casey Eubank owns her own bookshop in San Antonio, TX. . . . Linda DeLorenzo has returned to Washington, DC, after teaching a year in Germany and five years in South-

ern California. . . . Marcie Sissman Vedelli has two children: M. Jonathan (4) and Jodi (2). Her husband Joel is an assistant professor at Madison College in Harrisonburg, VA. . . . As of July 1, Maxine Watstein Kates and family will "finally" be settled. Dick is joining an OB-GYN group in Hartford, CT. Maxine, Dick, Robin (5) and Stephen (2) will be living in West Hartford, CT.

'68

Ellen Kramer teaches in the Douglas School in Acton, MA. . . . Barbara Fleming Bartlett teaches at the Harrington School in Chelmsford, MA. . . . Pamela Boyce moved to Maine last year and bought a 1778 old cape house "out in the sticks." She is teaching learning disabled 7th and 8th graders in Kennebunk, ME, and she loves being a "country farmer" and a "country school marm!" . . . Irene Pearson Doughty '68G teaches tennis privately and coaches the women's tennis team at Boston State College. She lives in Reading, MA.

'69

Donna Bull Thompson is teaching sixth grade reading in Wells, ME. . . . Sally Levin Mazer has joined a Pittsburgh, PA, stock brokerage firm, Moore, Leonard and Lynch, as a registered representative. . . . Marci Colagiovanni is a Title I consultant for the Rhode Island Department of Education. . . . Toby Silberstein Feldman received her master of education degree in administration, supervision and curriculum from the University of Maryland in December, 1975. She is currently teaching in Prince George's County, MD. . . . Sarah Sternlieb Stein wants all to be aware that she has moved to 17379 Camino Caldo, San Diego, CA 92027.



Sally Levin Mazer '69

'70

Ronne Grufferman Kaplan received her J.D. degree from New York University School of Law in June, 1975. Her husband Alan is also an attorney in NYC. Ronne is presently

working with the counsel to the president of Hunter College preparing a report under Title IX of the Education Amendments, prohibiting sex discrimination in education. She would love to hear from any alumni in the area. . . . Wendie Eisen Weisman teaches at San Jose State University. . . . Cynthia Lechan is an assistant editor with the American Book Company. . . . Susan Grossman is an executive secretary at the Lenox Hill Hospital in New York City. . . . Ellen Cotter '70G spends her time substitute teaching in Danbury, CT. . . . Ellen Leventhal Hewes teaches grade 1 at the Manzano Day School in Albuquerque, NM. . . . Carolyn Mann Kiniry has been teaching fourth grade in the Weymouth, MA, School System for the past six years. She became a mother on May 22 with the birth of Megan Elizabeth. Her husband Bill is entering Suffolk Law School in the fall. . . . Lynda Killkelley '70G is teaching in Fairfax County, VA.

'71

Ruth E. Bradford is a program support teacher in learning disabilities for the Racine (WI) Unified Schools. . . . Barbara Oxman Silverstein is teaching in the Malden, MA, School System. . . . Laura Grossman Lifshutz teaches at the Lincoln School in New Brunswick, NJ. . . . Betsy McCall Hale teaches at the Fox Hill School in Burlington, MA. . . . Judith Kanner teaches a multi-handicapped special class for the Windham (CT) Public Schools. . . . Loisann Brookman Huntley teaches in the Norwich, CT, School System. . . . Georgia Apgar teaches in Dunellen, NJ. . . . Mary Touloupoulos Koskores teaches in Burlington, MA. . . . Linda Bednarz was married last June to Richard Cyran and they are living in a new home in Easthampton. Linda received tenure in September, 1975, in Chicopee, MA. . . . Frances Foti Nonni teaches grade 3 at the Longfellow School in Cambridge and moved to Arlington, MA, this past year. . . . Since graduation, Sherri Kritzer married David Rindler, a psychologist from Lawrence, MA, and received her M.Ed. in Deaf Education from Western Maryland College. She is presently teaching severely emotionally disturbed adolescents in the Montgomery County Public Schools, MD.

'72

Pamela Foster Fisher earned a master of science degree in communication disorders from the University of Vermont at the end of May. . . . Ellen Yaffee received her master's degree from the University of Wisconsin, and she is teaching elementary remedial reading in Australia. . . . Susan Wolfe was married in 1973 to Michael Elinore; they live in Burlington, VT. . . . Lynn Kopins teaches in the Beverly (MA) Public Schools. . . . Margie Hill is a kindergarten teacher for the Ashland (MA) Public Schools. She lives in Brighton, MA.

'72G

Anita Meyer teaches at the Methodist Nursery in Winchester, MA. . . . Mary Buchanan teaches in Cambridge, MA.

'73

1973 Secretary:

Leslie J. Aitken

12 Wendell Street, Apt. #15

Cambridge, Mass. 02138

Deborah Shapiro Kraft teaches at the Baldwin Elementary School in Baldwin, MO. . . . Clarissa Quinley teaches kindergarten in South Weymouth, MA. . . . Beth Kaplan Bresky is a Cincinnati, OH, public school tutor. . . . Sally Ann Brenner Willis teaches at the Adams School in Portland, ME. . . . Suzanne Rogier Marshall teaches at the Prospect Heights Middle School in Orange, VA. . . . Tobi Elden is completing a master of arts degree in special education for the blind and visually impaired at Teachers College, Columbia University in New York City. She was recently initiated into Phi Delta Kappa and Phi Lambda Pheta, national honor societies for educators. In September she will be employed in the New Orleans School System as a vision specialist for blind and visually impaired pupils. . . . Kristina Hribik Mello has been teaching second grade in Weymouth, MA, for three years and loves it. . . . Suzanne Straus was married in July last year to Charley Phelps. She has been teaching in San Mateo, CA, since graduation in '73. Suzanne just received tenure and will receive her master's degree in elementary education from San Francisco State University this summer. Thanks go to Suzanne for her marriage news about Elaine Burke and Pattie DeBon.

'73G

Jean Dignan teaches kindergarten in the Albuquerque, NM, Public Schools. . . . Linda Picceri teaches in the Nashua School District, Nashua, NH. . . . Margaret Gregorie teaches at the Advent School in Boston, MA. . . . Claire Liverside teaches at the Long Middle School in N. Myrtle Beach, SC. . . . Barbara Brickman teaches at the Browne Jr. High in Malden, MA. . . . Hinda Entenberg Goodstein works with the special education collaborative of EDCO in Cambridge, MA.

'74

1974 Secretary:

Carol Shelmire

685 Oak Street #704

Brockton, Mass. 02401

Meryl Aaron is still teaching at the Unquowa School in Bridgeport, CT. She works with a nursery-kindergarten combination in the morning and full-day kindergartners in the afternoon. Meryl also leaves her morning classroom with a partner to teach first, sec-

ond and third grade music. . . . Alan and Susan Sheftel Shaw have been living in Framingham since November, 1975. She is in her second year teaching art in Leicester, MA. . . . Ellen Schwartz Hartford loves living in Palo Alto, CA, where she and her husband Danny have been for the past two years. Ellen has been teaching kindergarten and would love to hear from other transplanted Lesley grads. . . . Patricia Belisonzi Comiskey teaches in a 3-4 open space classroom in Oak Park, IL. . . . Cheryl Winn Tikonoff teaches in the Cambridge (MA) Public School System. . . . Ellen Rodman teaches kindergarten in the Needham (MA) Public Schools. . . . Rhonda Stein Casper teaches at the Fox Hill School in Burlington, MA. . . . Pamela Caragianes Christodoulo works for the Bureau of Pupil Services in Cambridge, MA. . . . Judith Ney Golb teaches in the Galena Park Independent Schools, TX. . . . Barbara Joyce teaches at Wellesley, MA, Junior High. . . . Jill Collier is teaching at the Crotched Mountain Rehabilitation Center in Greenfield, NH. . . . Janie Glantz is working at Bloomingdale in White Plains, NY.

'74G

Brenda Roberts is a math-learning disabilities teacher in four junior high schools in Newton, MA. . . . Margery Brenner is now residing in Paris, France. . . . Sarah Greenblatt teaches child development at Choate Rosemary Hall, and she is teacher/director of the laboratory nursery school that is connected with the course. . . . Mary Brayton teaches for the Weymouth, MA, Public Schools. . . . Lynne Kimball teaches in the Watertown, MA, Public Schools. . . . Nancy deMarneffe is teaching at the Advent School in Boston, MA. . . . Judith Siemen teaches at the Peabody School in Cambridge, MA. . . . Beverly Uze Greenblatt is a free-lance writer of children's literature. . . . Brian Berkowitz is working at the Massachusetts Center for Program Development and Evaluation. . . . Louis Cadot is a learning disabilities teacher in the Duxbury, MA, School District. . . . Jeanette Caldaroni is teaching in the Richards Avenue School in North Attleboro, MA. . . . Shane O'Neill is teaching in a trainable mentally retarded collaborative at the Green Forest School in Methuen, MA.

'75

1975 Secretaries:

Helen Chadwick

1103 Marlboro Road, Apt. D

Fayetteville, N.C. 28304

919-485-5847

Rosemary Hannon

11 Presentation Avenue

Brighton, Mass. 02135

617-254-7039

Karen Tuzzolino recently was hired as a teacher in the West Milford, NJ, school system. . . . Joyce Abrams teaches in the War-

wick, RI, Public School System. . . . Susan Strouse is teaching at the Parkway Day School in Germantown, PA. . . . Alison (Laurie) Post Spikell is teaching at the Hanscom Middle School, Lincoln, MA.

'75G

Joan M. Stofa is a learning disability specialist in Tiverton, RI. . . . Teresa DiGiovanni teaches for the Ayer, MA, Public School System. . . . Joanne DiMattia is employed as a resource room teacher in the Boston Public School System. . . . Linda Ashcraft is a reading specialist and assistant director of The Reading Game, a private reading center.

In Memoriam

Alice Fierney Conway '28
Florence White Durkee '15
Ruth Crocker Marchetta '47
Hazel Warren Sheffield '37
Barbara Shinn '51
Miriam Sears Tarr '40

Marriages

Donna Bull '69 to Arthur Thompson.
Pamela Caragianes '74 to George Evans Christodoulo on May 29.
Ilda Carreiro '74 to Jeffrey J. King.
Pattie DeBon '73 to Bill Ellis in July 1975.
Rochelle DiStefano '71 to Paul Geiger, Jr.
Michele Lipman '75G to Stephen Ostroff.
Susan Pattee '73 to David Lancaster on May 15.

Births

To Robert and Judith Gootkin Harvey '66, their second son, Alexander Shaw, on April 10, joins Jonathan Michael (3½).
To Brian and Nancy Hill Matza '68, a daughter, Alexis Ruth, on May 3, joins brother Evan David (2).
To Mark Segar and Susan Metters '70, a son, Joseph Metters Segar (Jody) on December 29.
To Don and Leslie Feuer Orton '70, a daughter, Kate Melanie, on January 24, joins brother Andrew Jason (4).
To Allen and Judith Horenstein Sausen '70, their first child, a son, David Asher, born on Mothers' Day, May 9.
To Joel and Sue Kerstein Sherman '65, a daughter, Abigail Kerstein, on April 13.
To Jeffrey and Beverly Zembrow Wain '70, their first child, Melissa Leigh, on March 19.
To Richard and Francee Sigal Solomon '67, a daughter, Caren Elizabeth, on May 24, 1975.
To Stanley and Carolyn Whitlock '73G, their first child, David Michael, on March 15. Maternal grandmother is Doris Hartwell Granger '35.
To Adele Webster Sparks '26, her first great-grandchild, Jennifer Baker, on May 21, 1975.

ANNUAL FUND REPORT

1975-1976



Dear Friends:

Lesley again received the wholehearted support of its alumni, trustees and corporators, parents, and significant financial assistance from foundations, corporations and governmental sources. Faculty and students also gave financial endorsement of the work being done at Lesley. Another all-time high was reached, \$245,907, which includes a significant governmental grant for Lesley's work with the Hennigan School pursuant to Judge Garrity's court order.

Many alumni classes gave marvelous contributions, both in terms of donor participation and dollar support. For the third consecutive year, Lesley College was cited as a finalist for the U.S. Steel Award, national recognition of alumni annual giving program improvement. For maintaining Lesley in the top 5 percent of performance by our nation's women's colleges, we give special thanks to Ann Cleveland Lange '59, Chairperson of the Alumni Annual Fund, assisted by Class Agent Chairperson Lorraine Blondes Shapiro '42, Graduate School Chairperson Betty Klaiman '65G and Dialathon Chairperson May E. Hogan '26.

Additionally, we express our gratitude to Lesley's Parents Committee of Connie S. Maniatty P'76, Nelson S. Burbank P'77, George S. Chase P'78, John D. Williams P'79 and Ralph L. Rose P'61, and to the leadership donations from Lesley's Governing Boards.

Above all, we give thanks to you, individually, for your interest in Lesley and hope that your participation next year will be bigger and better!

Elsa G. Sonnabend
Sincerely,
Elsa G. Sonnabend, Chairperson
Financial Development Committee

THE PRESIDENT'S ASSOCIATES

Recognizes donors of \$1,000 or more to the 1975-76 Annual Fund

Rosalyn Heifetz Abrams '67
Mr. Erwin H. Blonder
Arthur J. Connell
Marguerite Sharon Delany '50
Mr. Robert W. Fawcett
Mrs. Doris F. Held
Mr. Robert A. Kenkel P76
Janet Kaplan Laine '61
Mr. Richard M. Lee
Mr. Harry A. Loebel
Mr. Connie S. Maniatty
Mr. Ralph L. Rose
Mrs. Allene L. Russell
Mr. Jack T. Schwartz
Mr. Eliot I. Snider
Mr. Julian M. Sobin
Mrs. Elsa G. Sonnabend
Paula Sherin Stahl '68
Mr. Robert Tonon
Mr. James O. Welch

Mr. Daniel A. Leone P79
Winifred Linehan '55
Eileen MacElarney '53
Rita Mayher Maddock '35
Jane Finberg Mandell '64
Marian Neff Mayher '29
Mary McCarron Mead '25
Audrey Belson Meline '58
Nora Mullarkey '26
Doris Kimball Newman '31
Leslie Feuer Orton '70
A. Louise Lane Parker '67G
Marjorie Lebow Perlman '68
Elizabeth Moran Polachi '50
Evelyn Neff Provenzani '27
Winifred Randall '23
Amy Stellar Robinson '63
Helen Troderman Rosenthal '37
Selma Freede Rudolph '41
Marjorie Swartz Salmon '54
Mr. Sidney Sandler P77
Helaine Finkel Saperstein '62
Barbara Barron Schilling '50
Marjorie Truesdell Servis '29
Lorraine Blondes Shapiro '42
M. Sue Kerstein Sherman '65
Jeanette Pedersen Smith '40
Mr. Gerald L. Stempler P78
Mr. Richard Stiner P75
Joan Lubow Stone '64
Marjorie Stone Tanzer '64
Elizabeth Thomas '31
Mr. Robert B. Turner P76
Frances Smith Weibust '36
Wendie Eisen Weisman '70
Mr. John D. Williams P79
Elizabeth Wroe Wright '29
Gladys Pollet Young '26

LORD NEWARK ASSOCIATES

Recognizes Parent and Alumni gifts of \$500 - 999 to the College

Ellen Green Bloch '61
Joyce Marshall Snyder '61

CENTURY CLUB

Recognizes Parent and Alumni gifts of \$100 - 499 to the College

Leslie J. Aitken '73
Mr. Maurice E. Bale P62
Tina Brodsky Bellet '68
Elizabeth Fisk Brand '24
Mr. Nelson S. Burbank P77
Diane Bushner '68
Mr. George S. Chase P78
Mr. Philip T. Cohen P73
Mr. John J. Cuadrado P79
Elaine Cullinane '70
Gladys Elfenbein Daren '39
Bernice Dodge '24
Kitty Dukakis '63
Roberta Caras Fishman '61
Katherine Foley '28
Mr. Albert S. Frager P79
Polly Munroe Furbush '55
Gertrude Galvin '24
Celena Gavin '18
Mr. Gerald Gouchberg P78
Susan Pearl Grausman '67
Rissa Welt Grossman '67
Jean Fothergill Hahn '51
Dorothy Adams Hennessy '28
Mr. Stuart E. Hertzberg P74
May E. Hogan '26
Elizabeth Klaiman '65G
Ann Cleveland Lange '59

TRUSTEES

Mrs. Ruth B. Baker
Mrs. Polly F. Blakeley
Mrs. Ellen Green Bloch '61
Charles D. Bonner, M.D.
Mr. H. Gardner Bradley
Mr. Robert H. Cain
Mr. Edwin D. Campbell
Mr. Logan Clarke, Jr.
Professor Chester L. Dawes
Mr. John H. Dyer
Mr. Joseph M. Edinburg
Mr. Robert W. Fawcett
Mr. Hollis G. Gerrish
Mr. Charles H. Hood
Mrs. Frances H. Howe
Mr. Richard M. Lee
Mr. C. Charles Marran
Mr. William C. McConnell, Jr.
Mrs. Allene L. Russell
Mr. Jack T. Schwartz
Mr. Eliot I. Snider
Mr. Julian M. Sobin
Mrs. Elsa G. Sonnabend
Mr. Ernest F. Stockwell, Jr.
Mrs. Catherine N. Stratton
Mrs. Marjorie Stone Tanzer '64
Mr. Robert Tonon
Mr. James O. Welch

CORPORATORS

Mr. Julius Abrams
 Ms. Jacqui Adams
 Mrs. Joan F. Bishop
 Mr. Erwin H. Blonder
 Dr. Ruth F. Boland '24
 Mr. James C. Boyd II
 Mrs. Marguerite Shamon Delany '50
 Mr. William P. Dole
 Miss Eleanor M. Eddy
 Mr. Andrew W. Edmonds
 Mrs. Esther L. Feldberg
 Mrs. Doris F. Held
 Mrs. Donna Tufts Hopkins '52
 Mr. Harry A. Loebel
 Mrs. Ethel MacLean Mackenzie '35
 Mr. Paul D. Magee
 Mrs. Evelyn Marran
 Mrs. Mary McCarron Mead '25
 Mr. Richard D. Muzzy
 Mr. Harris J. Nadley
 Ms. Adeline Naiman
 Mrs. Elizabeth Moran Polachi '50
 Mrs. Dolly Rabb
 Miss Winifred M. Randall '23
 Mr. Harvey A. Robbins
 Mr. Ralph L. Rose
 Mrs. Selma Freede Rudolph '41
 Mr. Sidney Sandler P77
 Mrs. Lorraine Blondes Shapiro '42
 Mr. C. Vincent Vappi
 Mr. Charles P. Whitlock
 Mr. John D. Williams P79
 Mr. Donald B. Wilson

ALUMNI BY CLASS

1913-22 — 45%

Average gift: \$56.69
 Agent: Hazel M. Ross '21
 Charlotte Fish Glancy '13 (5)*
 Frances E. Fitzgerald '14 (2)
 Martha Bonsall Reece '14 (3)
 Helen McCarthy Cheever '15 (2)
 Annalexis McCafferty '15 (3)
 Margaret Rich Corson '16 (3)
 Dorothy Hartings Trefry '16 (3)
 Dorothy B. Cormack '17 (2)
 Gladys Heroy Griffin '17 (5)
 Etta Hunt '17 (2)
 Agnes Welch Feeney '18 (5)
 Celena E. Gavin '18 (1)
 Mary E. Kilroy '18 (5)
 Evangeline Given Piper '18 (5)
 Marion McLaughlin Yost '19 (4)
 Blanche Lewis Freeland '20 (5)
 Mariam Nelson '20 (5)
 Pauline Curtis Cronk '21 (2)
 Helen Cutter Laing '21 (2)
 Jean LaMont '21 (4)
 Hazel M. Ross '21 (3)
 Marion Allen Folger '22 (5)
 Mary E. Powers '22 (2)

1923 — 27%

Average gift: \$25.00
 Agent: Margaret Carroll Sampson
 Alice May Flynn (3)
 Sarah Trefry Gleason (1)

*() denotes years of consecutive giving.

ANNUAL FUND TOP TEN CLASSES

Percent Participation

Class	Percent
1926	67
1951	58
1943	52
1939	50
1947	50
1961	50
1928	46
1955	46
1911-22	45
1962	45

Most improved:

1947 31% increase

\$ raised

Class	Dollars
1961	3,196.00
1968	2,585.00
1926	2,182.00
1950	2,020.00
1967	1,904.00
1911-22	1,360.74
1970	1,110.00
1964	1,083.00
1929	823.00
1956-71G	786.00

1926 \$1,376.00 increase

Dorothea Johnson (3)
 Winifred M. Randall (5)
 Elizabeth Joy Rasmussen (5)
 Marice Ricker (2)
 Charlotte Clapp Russell (2)
 Margaret Carroll Sampson (5)
 Pauline Davenport Sawyer (4)
 Margaret Lyons Smith (5)

1924 — 39%

Average gift: \$24.19
 Agent: Edith Hulten Bibbins
 Edith Hulten Bibbins (5)
 Ruth Boland (5)
 Elizabeth Fisk Brand (4)
 Nora Sullivan Clancy (1)
 Kathleen Dwyer Davis (1)
 Bernice G. Dodge (2)
 Mary Sheeran Donohoe (1)
 Loretto G. Dolan (1)
 Gertrude Galvin (2)
 Jean MacGregor Hemenway (5)
 Mildred Gibbs Heverly (1)
 Marguerite Rich Kuhn (1)
 Lucie Mahoney Maroney (1)
 Helen Manning McWalter (3)
 Dorothea Meloy (2)
 Grace O'Hara (1)
 Margaret A. Phetteplace (3)
 Doris Britton Repetto (3)
 Hester Denby Sears (2)
 Frances Sinnett Snell (1)
 Dorothy Moulton Vickery (3)

1925 — 37%

Average gift: \$22.28
 Agent: Gretta Becker Sauer
 Bessie Brown Bliven (4)
 Sara Rubin Cohen (5)
 Catherine Murphy Crosley (2)
 Mildred O'Neil Crowley (2)
 Emily Priest Derby (2)
 Marian S. Durrell (4)
 Mary K. Fitzgerald (5)
 Florence Foley (5)
 Elizabeth Arnold Haynes (4)
 Hazel Mannion Herlihy (1)
 Edith Howlett (3)
 C. Teresa Lally (3)
 Katharine Knowlton Manley (2)

Eva Grant Marshall (5)
 Doris Kaulback Mason (2)
 Mary Welch Mathieson (5)
 Mary Alsop McClanahan (1)
 Mary McCarron Mead (5)
 Ruth Truesdale Meserve (5)
 Margaret Carney Murphy (3)
 Mabel Parker Rice (1)
 Mariam Riggs (5)
 Janet Prince Schultz (2)
 Anna Suchnicki (3)
 Miriam York (3)

1926 — 67%

Average gift: \$57.42
 Agent: May E. Hogan and Gladys Pollet Young
 Mildred Capodiceci Barberio (4)
 Eleanor Stedman Berry (2)
 Elizabeth Humphrey Bryant (2)
 Arline Warren Bumstead (2)
 Helen Fitzgerald Callahan (5)
 Thelma Freeman Cary (2)
 Margaret Davis Cobb (3)
 Margaret Reid Cote (1)
 Mildred Shea Curran (1)
 Dorothy Cushing (5)
 Catherine L. Devane (5)
 Kathleen Macbeth Dowd (5)
 Elizabeth Hill Foye (1)
 Rosamond Hawkins Harrison (4)
 Adah Lassone Hill (5)
 May E. Hogan (5)
 Helen Ewing Holmes (5)
 Ruth Trefethen Humphrey (4)
 Amelina C. Jennings (3)
 Helen Tryon Kennan (1)
 Grace Ellis Kline (5)
 Madeline Mary Lannin (3)
 Evelyn McAllister MacDonald (3)
 M. Gertrude MacDonald (2)
 Nora M. Mullarkey (2)
 Alice Byrne Murphy (5)
 A. Katherine Murphy (1)
 Thelma Howlett Penaligan (5)
 Olive MacNeil Pollard (4)
 Adele Webster Sparkes (4)
 Julia Robinson Spies (1)
 Virginia Smith Swett (3)
 Dorothy Hatch Ticehurst (4)
 Madeline Wallace Ward (1)

Virginia Delory Woll (1)
 Winifred Simpson Worgan (2)
 Gladys Pollet Young (5)

1927 — 32%

Average gift: \$15.83
 Agent: Evelyn Maguire
 Gail Sanford Abbe (5)
 Dorothy Hassley Boyle (3)
 Helen Seaman Coffey (3)
 Marian Winn Dade (1)
 Ethelyn Griffin Dick (1)
 Hazel Newhall Flanders (1)
 Ella Swanson Galvin (1)
 Constance Leonard (5)
 Eleanor Matthews Lucier (5)
 Helen MacGregor (1)
 Mildred Edmed Metcalf (2)
 Nadine Colby Nute (1)
 Kathleen O'Brien (1)
 Evelyn Neft Provenzani (4)
 Louise Blanchard Rice (1)
 Madeline Kelley Sanford (5)
 Constance Tenney (4)
 Elizabeth D. West (1)

1928 — 46%

Average gift: \$20.18
 Agent: Katherine Foley
 Margaret Mills Akin (4)
 Katherine Quigley Aleckna (1)
 Marjorie Davidson Blomquist (2)
 Agnes Menzel Bryant (2)
 Mary Strecker Champion (3)
 Elizabeth Philips Chapin (2)
 Eileen Markham Curtin (5)
 Emily Dawley (2)
 Martha Silva Deering (4)
 Jessie Taylor Dickerman (5)
 Marguerite Ferrari (3)
 Mary McNerney Fitzgerald (2)
 Katherine Foley (1)
 Nell Russin Goldberg (5)
 Doris Nelson Harrington (1)
 Lillian Hartwell (1)
 Dorothy Adams Hennessy (5)
 Patricia Lewis Hicks (2)
 Corinne Staples Hollis (1)
 Marion C. Little (2)
 Kathryn Lapham Mulvanity (2)
 Dorothy Fifield Nichols (5)
 Frances Whelton O'Hare (2)
 Margaret Egan O'Sullivan (3)
 Louise Linehan Roopenian (4)
 Hilda Lothrop Rudback (5)
 May Dunlap Seldomridge (2)
 Geraldine Becker Stark (2)
 Abigail Stokes (1)
 Marjorie Studer (3)
 Marion Van Aken (1)
 Dorothy Lloyd Wilkins (1)
 Matilda Chudnovsky
 Zwetchkenbaum (5)

1929 — 38%

Average gift: \$26.54
 Agent: Mary Greene Freeman
 Anna Emerson Andrews (1)
 Priscilla Newell Barstow (5)
 Helen Mather Benjamin (2)
 Dorothy McCusker Brebbia (1)
 Lora Standish Brouhard (5)
 Eugene Coppock Brumbaugh (2)
 Irene Bucek (5)

Adel Bushinger (3)
Beatrice Armstrong Chase (2)
Catherine E. Crosby (5)
Ethel Dineen Cummings (2)
Rachel Maher Davan (5)
Ruth Howlett Duhig (5)
Dorothy Moore Fitts (3)
Mary Greene Freeman (5)
Thelma Gale Greene (4)
Priscilla Wildes Kennard (5)
Lillian Magoon (4)
Hazel Burrington Martin (5)
Marion Neff Mayher (2)
Edith McPeake (1)
Helen Briggs Miller (2)
Ethel Bailey Multzman (2)
Rachel French Packard (5)
Edith Gottschalk Resler (2)
Gertrude Sanborn Sands (1)
Marjorie Truesdell Servis (4)
Elizabeth Boynton Shumway (4)
Ruth Collier Straight (5)
Janet Chadsey Stroebel (1)
Elizabeth Wroe Wright (5)

1930 — 40%

Average gift: \$13.46
Agent: Frances Pearl Schaffer
Eleanor Luey Bell (3)
Frances Snider Birenbaum (1)
Winifred Palmer Brachvogel (5)
Marian Nichols Busha (5)
Janice Grinnell Chace (2)
Mary E. Corcoran (1)
Frances Conley Dunton (4)
Helen Orlando Foggia (1)
Evelyn Ford (4)
Bertha McConnell Foster (2)
Geraldine Hilliard Graves (5)
Evelyn W. Hood (1)
Pauline Tracy Jones (5)
Estelle Brady Lash (4)
Ruth Shenton Law (2)
Hannah Andrews Leviston (1)
Catherine McDonnell (2)
Claire Haines Nevers (5)
Alyse Dearington Porter (1)
Frances Pearl Schaffer (5)
Daisy M. Sears (1)
Rose Mitrano Slavitz (1)
Dorothy Canty Sweeney (1)
Elizabeth Kirby Theissen (2)
Norinne Feeny Walsh (1)
Doris Inman Will (2)

1931 — 37%

Average gift: \$27.00
Agent: Doris Kimball Newman
Gertrude Patterson Borden (2)
Helen Belcher Chace (5)
Madaleine Nazro Cline (4)
Frances Cronin (2)
Helen Clark Dinjian (5)
Alice Robertson Dolan (1)
Gladys Canfield Frost (3)
Olivine Howland Frost (3)
Beatrice Grant Gellerson (4)
Jeanette Horne George (3)
Mary Mullins Hare (1)
Sr. Mary Francis Killilea SND (1)
Eleanor Davenport Leathers (5)
Laura Dixon Moulton (5)
Doris Kimball Newman (5)
Isadora Micheline Oliphant (2)
Lucille Musto Rizzo (1)
Alice Ramsdell Russell (2)

Alice Hagan Seabrook (1)
Beatrice Cruikshank Smith (5)
Eve Snider Talbot (1)
Elizabeth Thomas (5)
Catherine Moriarty Trafton (2)
Jane Nagle Turley (2)
Henrietta Becker Vernick (2)

1932 — 24%

Average gift: \$12.10
Agent: Mary Crankshaw Johnson
Julia Whitaker Cole (1)
Katherine Concannon (3)
Julia Flanagan Corbett (2)
Alice Harvey Fuller (3)
Kathryn Coffey Glennon (5)
Dorothy Potter Hawthorne (2)
Alice Metcalf Jewett (1)
Doris L. Johnson (5)
Mary Crankshaw Johnson (4)
Margaret T. Kinnier (1)
Mary Benoit Kirwan (3)
Virginia Andrews Lassieur (1)
Helen Reimer Matson (5)
Barbara Bullens McCrae (2)
Julia R. Pritchard (3)
Elizabeth Robbins Raffa (4)
Alma Burgess Rohdin (5)
Alicia Jewett Willard (2)
Edna Stephenson Wintle (1)

1933 — 28%

Average gift: \$14.25
Agent: Clare Murphy McGrath
Elizabeth Barber (4)
Marguerite Rienstra Cleverly (3)
Dorothy Hodgen Crowell (1)
Charlotte Hopkins Cummings (1)
Barbara Ramsey Dudley (4)
Evelyn O'Neill Greenhalgh (4)
Marian Smith Hilton (5)
Jane Wason Llanso (2)
Thelma Hutchins McDonnell (1)
Clare Murphy McGrath (4)
Gertrude Guimond Morrison (2)
Pauline Regan Rodgers (2)
Pearl Alpert Starr (1)
Frances Card Streeter (2)
Martina Sullivan Swanson (1)

1934 — 20%

Average gift: \$12.00
Agent: Thelma Rubin Leshner
Mildred Billings Clarke (1)
Marian Cohen Crown (3)
Katharine Shelton Curtis (3)
Kathleen Cail Dahlquist (5)
Jeanne Thayer Dunford (5)
Phyllis Johnson Ledgard (2)
Norma Lowekamp (1)
Dorothea Masse (2)
Mary Reardon (2)
Margaret Walsh (1)
Blanche Boucher Young (2)

1935 — 24%

Average gift: \$22.25
Agent: Irene Profio Lherault
Eleanor Cove Bergin (3)
Helen King Bodmer (1)
Ada Laurie Bryant (2)
Elizabeth Mason Carlisle (2)
Alice Goodrich Clark (5)
Constance Miller Grossman (5)

Eleanor Twitchell Gustafson (5)
Ethel Maclean Mackenzie (2)
Rita Mayher Maddock (2)
Doris Herlihy McNicholas (1)
Marjorie Gray Ray (4)
Marian Peaslee Turner (2)

1936 — 33%

Average gift: \$28.05
Agent: Helena Cavanaugh Austin
Helena Cavanaugh Austin (1)
Mary Bonzagni Ditto (3)
Barbara McMullin Dusseault (1)
Lauriette Emerson (1)
Ruth Breen Gagnon (5)
Beryl Downs Graff (5)
Harriet Woodsum Hall (5)
Dorothea Kenney Hennessey (1)
Dorothy Pfeiffer Marshall (2)
Bessie Grinnell O'Toole (3)
Ray Robbins Protheroe (5)
Elizabeth Bell Rill (5)
Janet Brown Svenson (3)
Jean MacMann Taylor (5)
Dorothy Noon Timberlake (2)
Frances Smith Weibust (5)
Doris Raefle Weir (3)
Bernice McLellan White (5)
Norene Jones Whitters (5)

1937 — 39%

Average gift: \$34.23
Agent: Hazel Warren Sheffield
Pauline Buck (5)
Mary Martin Connors (5)
Ann Scribner Crane (5)
Rita Ahern Denaro (1)
Claire O'Brien Driscoll (5)
Helen Keating Guarante (2)
Grace Easton Connolly Joy (1)
Constance Rizzo Manganaro (2)
Marjorie Quinlan (2)
Helen Troderman Rosenthal (1)
Constance Rizzo Russo (3)
Hazel Warren Sheffield (3)
Gladys Tourtillot Sundell (4)

1938 — 30%

Average gift: \$16.50
Agent: Nancy True Sears
Anne Schnitzer Brinkert (1)
Margaret Mulligan Fulton (3)
Gertrude DeWire Keyes (2)
Muriel Barber Kneib (4)
Anna T. Maccone (2)
Margaret Millican (5)
Charlotte Cooper North (2)
Mabel L. Phinney (5)
Nancy True Sears (5)
Marion Abboud Welch (1)

1939 — 50%

Average gift: \$13.35
Agent: Dorothy Grube Pratt
Mildred Peirce Aulenback (1)
Barbara Brown Austin (3)
Jane DuBon Benson (5)
Gladys Eifenbein Daren (5)
Helaine Sossen Freeman (5)
Ruth Hickey McAleer (2)
Arlene McLaren (1)
Beryl Rolfe McClary (2)
Eileen O'Leary O'Loughlin (1)
Dorothy Grube Pratt (5)
Dorothy Gemma Rowe (5)
Marjorie Green Stern (4)

Mary King Stevens (2)
Mary Milne Stubbs (4)
Anna Olson Watson (5)
Thelma Crossman Whitcher (1)

1940 — 33%

Average gift: \$21.92
Agent: Rosamond O'Neil Wyman
June Phillips Chapin (1)
Jean Spalding Dennis (1)
Mildred Wolger Howlett (3)
Adeline Brewitt Liberatore (5)
Ruth Robinson London (1)
Doris Treadwell Merritt (4)
Lucille Moseley (1)
Janet Rutherford Sherwin (1)
Jeanette Pedersen Smith (5)
Isabelle Szygula (1)
Norma Teague Taylor (1)
Bettina Negus Way (1)
Rosamond O'Neil Wyman (4)

1941 — 13%

Average gift: \$60.00
Agent: Selma Freede Rudolph
Jane Brockett Hibbard (1)
Selma Freede Rudolph (5)
Esther MacDonald Schmiederer (4)
Phyllis Herring Smith (5)
Constance Hovey Zea (4)

1942 — 42%

Average gift: \$21.21
Agent: Laurel Harrison Goldstein
Doris Dimery Amos (3)
Amy Cunningham Bateman (5)
Mary Stone Calabro (1)
Edith Nilson Conti (4)
Martha Boynton Cozzens (1)
Vera Snyder Goldberg (1)
Phyllis Johnson (2)
Trudy Vernon Magid (5)
Carol Davidson Scheerens (2)
Lorraine Blondes Shapiro (5)
Ann Swensson Sharke (2)
Marie A. Sullivan (4)
Eleanor Shuttleworth Thomas (1)
Jeanette Gordon Ushman (1)

1943 — 52%

Average gift: \$10.76
Agent: Elaine Callahan Cavanaugh
Anne C. Booth (3)
Helen Carmichael Caldwell (1)
Elaine Callahan Cavanaugh (5)
Elizabeth Kelley Cook (1)
Lourdes Marie Correia (3)
Barbara Gould Hamer (4)
Mary Louise Hood Harvey (1)
Jean Rogers Kenerson (2)
Sabra Goddard Newberth (1)
Maria L. Putnam (5)
Gertrude Stanley Schmidt (4)
Colleen Steele Van Vleck (2)
Jane Emery Walker (1)

1944 — 25%

Average gift: \$28.75
Agent: Barbara Robinson Wells
Mildred Goss Jones (3)
Mabel Hutchings Paige (3)

1945 — 40%

Average gift: \$10.00

Agent: Margery McCusker Flannery
 Eleanor Langley Barron (1)
 Margery McCusker Flannery (1)
 Helen Bohne Giffin (3)
 Natalie Saltmarsh Haas (1)

1946 — 26%

Average gift: \$18.75

Agent: Myrna Currie Jones
 Jeanne Ropp Berger (2)
 Myrna Currie Jones (3)
 Shirley Canning McGowan (5)
 Lois Loud Sylver (1)

1947 — 50%

Average gift: \$12.08

Agent: Mary Condakes Gornatos
 Marilyn Ellis Beldon (1)
 Betty Rauch Brensinger (2)
 Gloria Carpenter Chicarelli (1)
 Melba Kyriacos Collins (1)
 Nancy Sweet Edwards (2)
 Dorothy Dorsey Falk (1)
 Eleanor Reimer Harris (1)
 Eleanor Morganstein Lechan (2)
 Diane Yost Mason (1)
 Virginia Horton Mercer (1)
 Mildred Antoine Morrill (1)
 Claire Goldberg Weiner (1)

1948 — 24%

Average gift: \$17.50

Agent: Evelyn Boyle Finnegan
 Selma Chervin Bell (1)
 Jean Peckham Clark (1)
 Pauline Cloutier Eaton (1)
 Jane Caffrey Favrot (2)
 Evelyn Boyle Finnegan (2)
 Evelyn Blondes Lamb (1)
 Marcia Finn Lewis (3)
 Mary T. Shay (1)

1949 — 36%

Average gift: \$13.68

Agent: Mary Felton Baruffaldi
 Sarah L. Adams (1)
 Helen Zafferes Baron (1)
 Norma Perkins Barrows (1)
 Mary Haley Barry (4)
 Mary Felton Baruffaldi (1)
 Roberta Sibor Braley (5)
 Patricia Hall Heintz (1)
 Alice Coyle Henderson (4)
 Jo Malva (5)
 Jane Spaulding Morman (3)
 Shirley Polakewich Shriro (4)
 Rita Hyman Silverman (2)
 Virginia Woodbury Slavin (4)
 Beverly Strout Stevens (1)
 Polly Kisley Whitehead (3)
 Marion Zentgraf (5)

1950 — 40%

Average gift: \$84.16

Agent: Nancy Squatrito
 Dorothy Black Annis (5)
 Ann Perkins Briggs (1)
 Martha Morris Callahan (5)
 Shirley E. Colmer (1)
 Edouardine Donovan Conway (2)
 Lucille Cunnane (5)
 Marguerite Shamon Delany (3)
 Lois Berk Grayson (1)
 Eleanor Laplante Kehoe (4)

Lois Hanlon Lawless (1)

Leone F. Lawless (1)

E. Lucille Marcus (3)

Mary Robinson Maynard (3)

Lois Levine Mindell (3)

Sally R. Parker (3)

Elizabeth Moran Polachi (4)

Jeanne Northridge Robson (5)

Susan Linsley Royer (1)

Barbara Barron Schilling (1)

Nancy Squatrito (5)

Elizabeth Snedeker Thompson (2)

Natalie Crossland Trask (2)

Edith Marr Vokey (2)

Natalie A. Walsh (3)

1951 — 58%

Average gift: \$17.53

Agent: Sally McKay Libby
 Joyce Gomborg Aaron (5)
 Marjorie L. Behrens (5)
 Barbara Street Berry (1)
 Jane Hastie Carleton (5)
 Barbara Stevens Clark (3)
 Edith Streechan Cross (1)
 Maria DeGregoria (2)
 Harriet Seigal Dubin (5)
 Barbara Gofman Goldy (1)
 Doris Carter Griffin (1)
 Barbara LeMay Gulla (2)
 Jean Fothergill Hahn (5)
 Gretta Snow Harpham (1)
 Jane Hoffman Hart (1)
 Elizabeth Mahoney Henderson (2)
 Joann Springer Kirk (1)
 Shirley Marsh Krause (5)
 Sally McKay Libby (5)
 Bernice Rubin Loftus (2)
 Mary Ann Byrne Lombard (1)
 Carolyn Anne Macomber (1)
 Virginia Egan McCarthy (1)
 Barbara Hayes McGovern (1)
 Peggy Scholar Mirick (5)
 Elna Fone Nugent (1)
 Phyllis Brown Rhein (1)
 Barbara Shinn (2)
 Norma Oppenheim Skoler (1)

1952 — 22%

Average gift: \$14.06

Agent: Dorothy Miller Newton
 Mary E. Brady (4)
 Dorothy Shaw Cyr (1)
 Joan Flentje Forsyth (5)
 Audrey Furze (5)
 Brenda Gorey Garvin (4)
 Constance Jeffrey Harris (1)
 Donna Tufts Hopkins (5)
 Judith Sanborn Lewis (1)
 Edna Duchin Lipsitt (4)
 Catherine Yocum Roberts (2)
 Dorothy Saltgaver Russ (1)
 Barbara Roche Staffier (2)
 Anne Hoffman Sullivan (2)
 Doris Reynolds Tatham (2)
 Shirley E. Warren (5)
 Patricia Murphy Weall (1)
 Jacqueline Greenberg Wolff (1)

1953 — 29%

Average gift: \$18.87

Agent: Janice Kimball Lyons
 Brenda Tudhope Adamczyk (3)
 Jane Carey Bailey (2)
 Nancy Tremblay Bean (4)
 Dianne Butterfield Brosnan (2)

Sylvia Cohen Brown (4)

Margaret Barton Cook (4)

Arline Pheasant Davis (3)

Janis Krall Durfee (2)

Marie Keohane Finnegan (1)

Peggy Vincent Fisher (1)

Nancy Bennett Hofstetter (2)

Ann Regan Jasse (1)

Frances MacIsaac Leonard (1)

Barbara Conway Lubick (3)

Janice Kimball Lyons (5)

Eileen MacElarney (5)

Mary Sanders McPherson (1)

Patricia Howard Reichert (1)

Norma Bennett Reinhold (5)

Ellen Sears Sansone (5)

Elizabeth Knights Thomas (3)

Blanche Webster (2)

Betty B. Willey (3)

Zoe Eberhardt Woodruff (3)

1954 — 40%

Average gift: \$16.73

Agent: Marjorie Swartz Salmon
 Ann Lynch Adams (1)
 Doris Blood (2)
 Mary E. Brahaney (1)
 Marian Oliver Buescher (1)
 Martha Carroll (5)
 Ann S. Casey (5)
 Iasme Contos Chiotelis (4)
 Cynthia Wilson Connor (1)
 Jane Geoghegan Cosman (2)
 Janet Currier (1)
 Anne Morrison Fioravanti (1)
 Myrna Shufro Fruitt (1)
 Dorothy Ullian Gorodetsky (1)
 Virginia Haines Hull (5)
 Jane DiTiberio Johnson (5)
 Dena Waldman Lavine (2)
 Lavina Dallahan Lawless (5)
 Joan Weller Lisson (1)
 Marcia Egan Miller (1)
 Carol Parsons Rader (1)
 Ruth Welensky Roblin (3)
 Marjorie Swartz Salmon (5)
 Della MacAskill Schultz (5)
 Janet Williams Schultz (1)
 Mary McCarty Stevens (4)
 Clare Donovan Wadsworth (5)

1955 — 46%

Average gift: \$17.50

Agent: Barbara Paul Holzman
 Elaine Barron Alexander (3)
 Mary Gibling Cogswell (5)
 Cynthia Reidy Cronin (2)
 Roberta Fine Danberg (4)
 Mary Ann Corcoran Derba (4)
 Mary Carew Dyke (5)
 Priscilla Johnson Foltz (3)
 Maureen Duffy Forrester (3)
 Polly Munroe Furbush (5)
 Sema Fieldman Gelin (4)
 Carol Miller Germain (1)
 Diann Eldredge Holland (5)
 Marilyn Kliman Holstein (2)
 Barbara Paul Holzman (5)
 Kathryn Wegerdt Kearns (4)
 Winifred M. Linehan (5)
 Carol McKenna Mead (1)
 Maria Deros Pappas (1)
 Janice Brickle Rice (2)
 Carol Shriber Sokolov (1)
 Lois Finke Spiegel (2)
 Anne Sampson Watson (3)

1956 — 33%

Average gift: \$14.54

Agent: Marjorie Kraft Goren
 Lana H. Bailey (4)
 Mary Riley Barbone (1)
 Rebecca Bicknell Brigham (2)
 Lorraine Seth Campbell (2)
 Patricia Cates (1)
 Janice O'Keefe Coan (1)
 Sheila Collins Frank (3)
 Shirley Zelinsky Garber (1)
 Dorothy Farr Gilgut (4)
 Gloria Schneider Clark Kern (1)
 Sheila Rudolph Lakin (2)
 Catherine Donley McGovern (1)
 Margaret Michaud McNally (3)
 Sonya Krainin Morris (1)
 Donna Flood O'Shea (1)
 Ruth Weisman Peck (5)
 Ann Brittain Pipkin (5)
 Carol Levine Pozefsky (1)
 Barbara Burman Silverman (5)
 Nancy Bluestone Tofias (5)
 Dorothea Gemos Tsapatsaris (1)
 Jo Davis West (5)

1957 — 33%

Average gift: \$13.88

Agent: Linda Weisberg Altman
 Linda Weisberg Altman (5)
 Sondra Shindell Berman (1)
 Lois Herbert Brower (2)
 Polly Timperley Brownell (2)
 Geraldine Johnson Bunker (1)
 Claire Lewis Currier (1)
 Elaine Thorner Damelin (1)
 Sheila Levitt Estrin (1)
 Patricia McHugh Ford (3)
 Elizabeth Tewksbury Ham (5)
 Marjorie Brenner Lipkin (1)
 Maurine Locke (2)
 Margaret Conway MacRae (4)
 Kathleen Carroll Maggelet (3)
 Elizabeth Bouffard Marques (1)
 Caryl Marrone Masiello (1)
 Elizabeth Fleming McMorro (5)
 Barbara Stellwagen McVeigh (2)
 Merle Royte Nelson (5)
 Judith Podradchik (1)
 Barbara Bufferd Rashba (5)
 Joan Weinstein Sherman (4)
 Carolyn Palmer Tirrell (1)
 Janice Spurr Titus (5)
 Joan Frank Wolfson (1)

1958 — 37%

Average gift: \$16.73

Agent: Audrey Belson Meline
 Georgia Louras Bartlett (1)
 Carol Webber Cook (2)
 Anne DeLuca Cote (4)
 Fredrika Van Vleck Cox (3)
 Diane LaBell Feinzig (4)
 Mary Jane Rawlings Finethy (2)
 Judith Einstein Finkle (5)
 Marlene Zionts Friedman (5)
 Maureen O'Connell Garvey (2)
 Mary Louise Heath (5)
 Rosalie Podrachik Katz (1)
 Nancy Powers Kelley (5)
 Linda Prager Lazaroff (5)
 Judith Aronson Lizerbaum (1)
 Dorothy Abrams Marshall (1)
 Elisabeth A. McCauley (5)
 Madeline McDonald (1)
 Audrey Belson Meline (5)

Anne Dunphy O'Reilly (1)
 Roberta Zuker Prives (1)
 Carole Jarin Rubins (4)
 Maureen Green Stone (5)
 Ruby Skindel Strauss (2)
 Beverly Roman Wine Wall (1)
 Blanche E. Wetmore (3)
 Beverly Peck Zindler (3)

1959 — 40%

Average gift: \$17.57
 Agent: Jo Anne Wales Eldridge
 Lindalee Levin Adler (5)
 Marilyn Waldman Attenberg (5)
 Barbara Nussinow Bartman (2)
 Marilyn Freede Berman (2)
 Deborah Millman Burwick (5)
 Marcia Solberg Chauncey (2)
 Joan Paresky Chernoff (5)
 Maureen Ingoldsby Clark (2)
 Joyce Leonard Cody (1)
 Barbara Harrison Dine (5)
 Alice Silverstein Fierstein (4)
 Marilyn Young Foltz (4)
 Seena Chandler Goldman (1)
 Sylvia Oppenheim Goodwin (2)
 Nancy Brenner Goorno (1)
 Lucille Martel Huggins (1)
 Elaine Kritz Jacobs (4)
 Susan Ferran Joseph (1)
 Lynne Alexander Josephson (1)
 Diane Zerner Kizner (5)
 Ann Cleveland Lange (4)
 Ann Ciolo Luca (3)
 Carol Goldberg Miller (2)
 Joanne Holland O'Brien (1)
 Joan Petraglia Poepoe (5)
 Mary Fenwick Reckford (5)
 Edith Marsh Ryall (4)
 Jane Robertson Ryer (5)
 Elaine Belisle Searcy (2)
 Marsha Kolsky Traub (1)
 Bette Chambers White (5)
 Eileen Israel Wolff (1)
 Barbara Lamkin Wolkon (4)

1960 — 43%

Average gift: \$17.35
 Agent: Elaine Zucker Wax
 Marcia Juliano Abate (2)
 Marjorie Sakalove Abramowitz (5)
 Sheila Brickman Byers (1)
 Mary Lou White DeNardis (5)
 Gail Roberts Dusseault (5)
 Elaine Bornstein Ellis (4)
 Judith Weisman Ellison (2)
 Carol Scipione Fialkosky (4)
 Saralee Fineman Gordon (5)
 Selma Bass Gortler (3)
 Diane Sharp Hadelman (5)
 Marcia White Hegarty (5)
 Sheila Goodman Hellinger (2)
 Sandra Freshman Keller (5)
 Joslyn Hills Kirkegaard (1)
 Phyllis Bernhardt Lerner (4)
 Lenore Berman Lieberman (5)
 Lorraine Smith LoGrande (2)
 Barbara Limmer Loughlin (5)
 Susan Martin (1)
 Anne Neal Nolan (5)
 Elaine Meisner Nottenson (3)
 Arlene Mendelson Offenberg (1)
 Barbara Goldman Packer (5)
 Jean Schinzel Paterson (1)
 Lynn Elkins Penson (1)
 Catherine McGinness Reilly (2)

Joyce Karp Rosenthal (5)
 Donna Kasowitz Rubin (5)
 Rae Dinner Seife (3)
 Evelyn C. Stratton (2)
 Elaine Zucker Wax (4)
 Sandra Kream Zimon (5)
 Elizabeth Zucco (5)

1961 — 50%

Average gift: \$74.32
 Agent: Golda Siegal Doyle
 Cynthia Barnum Allyn (3)
 Ellen Green Bloch (5)
 Geraldine Milhender Bloomberg (5)
 Carol Impallaria Brickett (4)
 Margie Vacirca Caron (3)
 Ruth M. Chasse (1)
 Marlene Steinman Chorchos (4)
 Priscilla Henry Currier (1)
 June Borges Douglas (1)
 Golda Siegal Doyle (5)
 Joan Sorkin Dretler (5)
 Barbara Smith Effenson (2)
 Judith Scherban Fine (1)
 Roberta Caras Fishman (5)
 Maureen Fowler (5)
 Lenore Lynch Fraser (2)
 Judith Shulman Friswell (1)
 Della Rose Gilman (5)
 Benita Crosby Goldman (1)
 D. Inglee Harding (5)
 Peggyann Evans Harris (3)
 Shirley Spiegelman Horvitz (3)
 Jacqueline Goldwyn Kingon (5)
 Janet Kaplan Laine (5)
 Louise Shapiro Levine (3)
 Sandra Wiles Marquis (5)
 Elvira Draghetti Nannini (1)
 Rochelle Shapiro Nolan (2)
 Norma Penney (5)
 Judy Katzman Rosenthal (1)
 Ilene Pariser Ruttenberg (3)
 Jane Sugarman Sachs (5)
 Eleanor Michelson Shaevel (2)
 Starr Shulman (1)
 Saralee Drubner Simberg (5)
 Sandy Prager Singer (2)
 Joyce Marshall Snyder (5)
 Elaine Driben Steinman (5)
 Jeanette Hobbs Valence (1)
 Betye Baum Wasserman (2)
 Molly Lynn Gustafson Watt (1)
 Beverly Miller Weir (1)
 Anonymous

1962 — 45%

Average gift: \$17.66
 Agent: Marjorie Wolbarst Smith
 Charleen Dinner Alper (5)
 Jane Kudisch Ansin (5)
 Adele Krantz Bernstein (3)
 Faith E. Bowker (2)
 Irene Scimone Buonopane (5)
 Marilyn Eisenberg Chandross (1)
 Arlene Chorbajian (3)
 Ruth Judlowe Collier (4)
 Marjorie MacKay Fleming (2)
 Joan Perlroth Gelpey (4)
 Marcella Harrington Haviland (4)
 Susan Harlowe Howe (4)
 Cindy Zalvan Katzeff (4)
 Ann Wekstein Kazer (5)
 Sybil Nassau Koplowitz (1)
 Lynne Bale Kovacs (3)
 Joyce Freedman Liebman (1)
 Marian Horvath McGee (2)

Mary Garvey McLaughlin (5)
 Camilla Chickering Moore (3)
 Brenda Rawding Pilletere (4)
 Judith Rosen Rothenberg (5)
 Helaine Finkel Saperstein (5)
 Sandra Rosenthal Schultz (3)
 Naomi Belson Stamper (3)
 Barbara Waterman (5)
 Barbara Roffman Wider (3)
 Arlene Wilson Wiggetman (2)
 Diane Berkowitz Wilcon (4)
 Judith Davidson Wilson (1)

1963 — 30%

Average gift: \$24.32
 Agent: Dolores Glasser Orkin
 Arlene Neufeld Berens (4)
 Marilyn Saltz Bernheimer (5)
 Judith Clifford Campbell (3)
 Eleanor Corcoran (1)
 Kitty Dukakis (1)
 Judith Kimball Emerson (2)
 Joyce Levy Epstein (2)
 Susan Wilcon Etelman (5)
 Joy Wainwright Fidler (5)
 Gail Perreault Glanville (1)
 Roberta Rain Goldstein (1)
 Sheila Klein Gottfeller (2)
 Linda C. Hauser (3)
 Sheila Foster Israel (1)
 Rosalyn Cohen Kaufmann (5)
 Pamela Nevins Kirk (4)
 Martha Sauntry McLaughlin (2)
 Edythe Marcus Messer (2)
 Sue Newman Orenstein (3)
 Dolores Glasser Orkin (2)
 Geraldine Nye Pedrini (5)
 Linda Leveton Radding (5)
 Amy Stellar Robinson (5)
 Lynn Mills Shapiro (1)
 Josene Stephens Steinberg (4)
 Naomi Nason Tabello (4)
 Marcia Turkewitz Worobow (2)
 Marilyn Kramer Yassin (5)

1964 — 42%

Average gift: \$23.04
 Agent: Joan Lubow Stone
 Ann Quain Abbott (5)
 Linda Dow Ballard (3)
 Judith Friedman Belsky (3)
 Harriet Furlong Bigelow (1)
 Phyllis Golder Brick (1)
 Susan Friedman Brownstein (2)
 Joan Campatelli Ciampa (3)
 Linda Spector Cohen (4)
 Frances Hennessey Connelly (3)
 Barbara Cordover (1)
 Charlotte McKeone Devoe (5)
 Joan Gillespie Diamond (1)
 Janice Carroll Donovan (5)
 Paula McKinnis Drewett (2)
 Rhoda Hochberg Edwards (1)
 Joyce Finkelstein (5)
 Naomi Neiman Fruitt (1)
 Geraldine Bohn Gerson (3)
 Judith Hindley Gettman (2)
 Sandra Fannick Goldfarb (3)
 Ruth Liston Hastbacka (2)
 Lovisa Wells Hill (3)
 Arleen Litner Jacobs (2)
 Judith Pierce Jefferson (1)
 Gail Epstein Kinsky (3)
 Janet Heske Kophs (4)
 Phyllis Weinberg Levy (4)
 Diana Schaffer Lewinstein (3)

Jane Finberg Mandell (5)
 Karen Finkle Marcus (4)
 Connie Markey (1)
 Helen Voorhees Quodomine (3)
 Ina Nesson Rogal (1)
 Karen Kalker Schotland (1)
 Rhoda Schoolnick Smolensky (4)
 Joan Lubow Stone (5)
 Patricia Cummings Sullivan (1)
 Margaret Wall Sullivan (1)
 Susan Golden Tannor (2)
 Marjorie Stone Tanzer (5)
 Francine Braddon Tenenbaum (1)
 Georgia Nickles Tingus (1)
 Rozanne Greenberg Weinberg (1)
 Diane Nassau Weiss (2)
 Betsy Rosenthal Weissel (3)
 Irene Brody Wheinstone (4)
 Ellen Roberts Yorks (1)

1965 — 38%

Average gift: \$19.92
 Agent: Linda Spill Cooley
 Joanne Baumberg (1)
 Lynda Govoni Beane (2)
 Sharon Leach Bond (2)
 Sheila Higgins Capute (3)
 Joan Eaton Duesing (3)
 Carol Orgel Einstein (5)
 Suzanne Straub Fee (5)
 Natalie Sparrow Fischer (3)
 Alice McConathy George (3)
 Jane Forsell Gibbons (2)
 Comfort Gilder Gordinier (3)
 Glenda Green Grossman (2)
 Marjorie Lehigh Guth (2)
 Rhoda Friedman Handwerger (1)
 Rachel Freedberg Hershenow (2)
 Chloe Burton Horton (5)
 Jane Collins Jones (2)
 Beverly Siskind Kahn (1)
 Matilda Deraney Khiralla (1)
 Marilyn Swinkin Lichtenstein (1)
 Jane Coffin MacInnes (2)
 Gloria Kneil Magliozzi (5)
 Virginia Maloney (5)
 Betsy Burnes McCarthy (2)
 Nancy Mellen Meehan (5)
 Patricia Reiners (1)
 Carol Brainerd Roberts (2)
 Carol Ann West Scully (3)
 Sue Kerstein Sherman (5)
 Martha Grossman Sholes (5)
 Barbara Triber Silverman (3)
 Ellen Capriccio Swinconeck (3)
 Gaille Perduyn Thompson (2)
 Elaine Saykin Weiner (5)
 Harriet Gold Weinstock (2)
 Alice Weston Weissman (2)
 Joanne Scimone Welle (2)
 Gae West Yelle (4)

1966 — 34%

Average gift: \$12.20
 Agent: Marilyn Sargon Brier
 Susan Duffy Anderson (5)
 Katherine Lamonakis Batsis (3)
 Jane Vail Boettger (1)
 Nancy Bogg (1)
 Marilyn Sargon Brier (5)
 Mary Kingsbury Clark (5)
 Barbara Cohen (4)
 Sandra Glassman Cohen (1)
 Mary Dunn Desrosiers (1)
 Eileen Cutler Espovich (1)
 Phyllis Mishkin Fentin (1)

Linda Goff Gersten (4)
 Janet Marguiles Goldstein (1)
 Nancy Brown Grim (1)
 Jane Atwater Hale (1)
 Jane Regier Harrington (1)
 Judith Gootkin Harvey (4)
 Jean Ann Heide (1)
 Rae Perkins Heiner (3)
 Jayme-Sue Sicherman Horowitz (3)
 Marie Samiotas Kapsalis (1)
 Irene Kiley (1)
 Susan Katz Mazor (5)
 Patricia Egan McCarthy (1)
 Eleanor Ligeiro Monis (2)
 Cynthia George O'Grady (1)
 Jayne Chayet Olken (1)
 Julie McEnaney Quinn (1)
 Sandra Feinstein Radjounsky (3)
 Janet Coulburn Ray (1)
 Miriam Gold Rovner (4)
 Diana Abraham Sawyer (4)
 Dorothy Nider Shapiro (2)
 Pearl Gerber Shyavitz (2)
 Arlene Guth Soifer (2)
 Susan Briggs Sylvia (2)
 Connie Murphy Treen (1)
 Meryl Rubin Widman (1)
 Pamela Wilson (2)

1967 - 38%

Average gift: \$47.60
 Agent: Andrea Poolner Glovsky
 Rosalyn Heifetz Abrams (5)
 Marilyn Baskies Antina (2)
 Ellen Herwitz Atkins (5)
 Judy Soled Bortman (1)
 Mary Rezendes Brown (1)
 Sally Goldman Close (1)
 Elizabeth Arrants Cox (2)
 Linda DeLorenzo (1)
 Galen Deming (3)
 Patricia Ives Dunning (2)
 Elizabeth Heidelberg Elberfeld (1)
 Sandra Casey Eubank (1)
 Jane Becker Fine (4)
 Susan Schneider Gagnon (2)
 Andrea Poolner Glovsky (5)
 Susan Pearl Grausman (4)
 Rissa Welt Grossman (4)
 Sheila Andelman Heller (2)
 Maxine Watstein Kates (4)
 Susan Tendler Kotlen (1)
 Gail Mardus Lebowitz (3)
 Leslie Lenox (1)
 Judith Weiner Menkes (2)
 Pamela Baughman Mitchell (1)
 Gail Newman (2)
 Dianne Bass Orenstein (2)
 Jean Birmingham Osofsky (5)
 Joan Schackman Osofsky (2)
 Elaine Strachman Paster (1)
 Rosemary Ilvento Penta (2)
 Ellen Tillis Rich (2)
 N. Janet Reed (2)
 Eileen Rogoff (5)
 Ina Zutulove Segal (3)
 Elaine Winiker Smith (5)
 Francee Sigal Solomon (5)
 Regina Rosenbaum Stein (4)
 Denise Galvin Swan (2)
 Marcie Sissman Vedelli (1)
 Arlene Glidear Zitomer (3)

1968 - 28%

Average gift: \$64.62
 Agent: Marjorie Lebow Perlman

Helaine Friedman Aronson (3)
 Susan Corcoran Bamond (1)
 Barbara Fleming Bartlett (2)
 Tina Brodsky Bellet (3)
 Pamela Boyce (2)
 Barbara Bradley (1)
 Pixie Wollin Brudnick (3)
 Karen Brandsema Brunstrom (1)
 Diane E. Bushner (5)
 Jean McDonald Diemert (1)
 Anita Schiano DiLibero (1)
 Karen Hertz Freedberg (2)
 Paula Kelly Gaither (1)
 Diane Hyman Gass (2)
 Ruth Spritz Grossman (1)
 Carol Kalfaian Hanson (4)
 Karen Berenson Harsfield (1)
 Ellen Kramer (2)
 Carolyn Bourne Kronengold (4)
 Marsha Furchheimer Mattison (1)
 Carolyn Lippitt McCarthy (4)
 Judith M. Newlander (3)
 Lois Rosner Older (5)
 Annalee Tozier Pease (5)
 Marjorie Lebow Perlman (1)
 Marjorie David Rahn (1)
 Linda Leshner Revzan (1)
 Helena Murphy Russell (1)
 Andrea Tye Safran (1)
 Ilene Meyer Shapiro (2)
 Jerrilyn Kirschbaum Smith (4)
 Cynthia Spack (1)
 Paula Sherin Stahl (4)
 Maxine Price Sugarman (2)
 Beverly Tash (4)
 Leslie Blonder Tramer (1)
 Carolyn Costello Turner (4)
 Mary Kuhn Weber (1)
 Barbara Greenberg Zdziarski (2)
 Janet Matluck Zimmerman (2)

1969 - 35%

Average gift: \$13.00
 Agent: Amy Doherty
 Deborah Wainer Abrahams (4)
 Judith G. Ananian (1)
 Susan Schwartz Bloom (3)
 Diane Roach Bradley (1)
 Nancy Cooperstein Carlinsky (3)
 Marci Colagiovanni (1)
 Amy T. Doherty (2)
 Virginia Dorne (1)
 Susan Levi Driscoll (3)
 Shirley Culgin Drury (3)
 Ruth Lilien Fay (5)
 Toby Silberstein Feldman (3)
 Janey Kuchinsky Frank (5)
 Faith Ackerman Gordon (1)
 Rita Heller (1)
 Ellen Satin Hirsch (1)
 Elisabeth Narcus Kasakoff (3)
 Phyllis Gabowitz Kremen (2)
 Fern Sherri Levine (3)
 Joanne D'Amato Lyons (2)
 Janice Kelleher Mazzotti (1)
 Linda Alejos Mitchelmore (3)
 Tobey Salmanson Oresman (3)
 Judith Hinderstein Phillips (1)
 Deborah Schwartz Raizes (5)
 Marjorie Levine Ritvo (1)
 Nancy Dean Ross (1)
 Berta Gallin Samson (5)
 Elaine Coughlin Schaeffer (3)
 Barbara Seipel Schwoegler (1)
 Marjorie Green Segel (2)
 Eileen M. Shanahan (2)

Susan-Jane Hill Shell (3)
 Patricia Raskin Shmishkiss (1)
 Jane Resseguie Shubert (4)
 Ann Carp Siegel (5)
 Anita Silverstein (1)
 Mary Nitchie Smith (2)
 Arlene Glaser Sobol (2)
 Elizabeth Hickey Stakem (2)
 Judith Griffin Toulas (1)
 Karen Minsinger Van Magness (1)
 Marjorie Sack Winnick (1)
 Irene Scariatelli Zalesky (1)

1970 - 34%

Average gift: \$24.66
 Agent: Margery Kahn Henzi
 Marjorie Silverman Afergan (3)
 Lisa Kline Aframe (2)
 Linda Walker Bernard (1)
 Diane Hunter Bond (3)
 Susan Finstein Brine (5)
 Janis Carter Burke (3)
 Diane Glucksman Byrne (1)
 Mary-Jane Casse-Young (1)
 Marcy Goldman Cohen (1)
 Elaine Cullinane (5)
 Nancy Sobin Drouer (2)
 Susan Spencer Dworkin (4)
 Mollye-Sue Lichter Feldman (1)
 Harriet Rifkin Fingerroth (3)
 Roberta Cohen Florin (2)
 Dale Feigenbaum Gordon (1)
 Ellen Pekin Gordon (3)
 Susan Grossman (3)
 Margery Kahn Henzi (2)
 Anne Weinstein Herman (1)
 Ellin Leventhal Hewes (3)
 Linda Geller Hurvitz (1)
 Joy Sulka Kant (1)
 Sharon Coyne Karp (3)
 Ellen Harrison Katz (3)
 Jill Dicair Kleeman (1)
 Sharon Clifford Knudsen (5)
 Cynthia Lechan (1)
 Lyn Kriesel Levine (1)
 Sandra Moriarty Luce (5)
 Linda Regine Martin (2)
 Susan Metters (2)
 Leslie Feuer Orton (2)
 J. Dana Reid (2)
 Ann Greenberg Rogel (4)
 Linda Shaftel Rothstein (3)
 Nancy Siegal (4)
 Carol Stewart (1)
 Roberta Tillman (1)
 Elizabeth Benoit Tougher (1)
 Beverly Zembrow Wain (3)
 Jane Place Weaver (4)
 Wendie Eisen Weisman (4)
 Rhona Yanofsky (2)
 Alain Zulofsky (2)

1971 - 32%

Average gift: \$11.18
 Agent: Sara Feldman Salomon
 Carol Hamer Alcusky (3)
 Georgia C. Apgar (3)
 Sally Blois (3)
 Ruth E. Bradford (2)
 Diana Young Clark (1)
 Andrea Meisel DeVries (5)
 Raelyn Parsells Dibble (2)
 Jean Schulman Dougan (5)
 Janice Sherman Epps (3)
 Roberta Feinstein Gilstein (4)
 Nancy Greenwood (1)

Betsy Drew McCall Hale (5)
 Marybeth Galgay Haynes (1)
 Loisann Brookman Huntley (2)
 Ina T. Hyman (1)
 Darlene Lescovich III (2)
 Judith M. Kanner (3)
 Mary Touloupoulos Koskores (4)
 Marjorie Kaufman Lazarus (2)
 Judith Lederman (4)
 Jennie Fong Lee (1)
 Laura Grossman Lifshutz (2)
 Joyce Wilmoth MacKinnon (1)
 Frances Foti Nonni (4)
 Marjorie Hanrahan Oberto (1)
 Suzanne Palmeri (1)
 Joan Hermann Powell (2)
 Sara Feldman Salomon (2)
 Diane Shapiro Siff (1)
 Barbara Oxman Silverstein (2)
 Carol Petrillo Soumoff (1)
 Joyce Beldon Turner (1)
 Lynne Baratta Venetucci (2)
 Martha Frederick Vicens (2)
 Doris Wilhousky (5)
 Linn S. Wilson (2)
 Deborah Ohlsson Worth (4)

1972 - 18%

Average gift: \$11.13
 Agent: Brina Einstein Neustat
 Barbara Beck (4)
 Joyce Goldstein Brink (1)
 Dorothy Frampton Earle (4)
 Mary Fitzgerald Fascetta (1)
 Pamela Foster Fisher (2)
 Nancy Coyne Glazer (2)
 Patti Gordon (1)
 Elaine Huffert (3)
 Peggy Robbins Jacobson (1)
 Anise Greenspan Kaplan (1)
 Lynn Kopins (3)
 Sandra Lawson Lambert (3)
 Teena J. Leben (2)
 Laurel Kloomok Lindaver (1)
 Deborah Katz Mann (1)
 Constance Martin (1)
 Brina Einstein Neustat (2)
 Jane O'Brien (3)
 Angela Polcari (2)
 Susan Lane Shriner (3)
 Barbara Rifkin Shuffain (1)
 Linnea E. Turner (3)
 Ellen Yaffe (2)

1973 - 19%

Average gift: \$10.22
 Agent: Andrea Strongin Abraham
 Leslie J. Aitken (1)
 Jane M. Albert (3)
 Joy Ford Berezin (2)
 Miriam Finkelstein Berkelhammer (1)
 Kathleen McCarthy Boland (1)
 Beth Kaplan Bresky (2)
 Carol Ciampa (3)
 Jean Bartolucci Doran (2)
 Marlene Drape (1)
 Joyce McCarthy Gigante (2)
 Susan Glaser (1)
 Joan Goldman (2)
 Edwina Canavan Goodhue (1)
 Susan Heath (2)
 Maryann Hysler (3)
 Cathy Goldberg Jarvis (1)
 Nadine Hettig Johnson (1)
 Linda Ohanesian Kahn (1)
 Laurellann Bowker Kime (3)

Deborah Shapiro Kraft (3)
 Gail Lehrhoff (2)
 Charlotte Krupp Lerch (1)
 Margaret Lopes (1)
 Cynthia Schwarz Lowenthal (2)
 Ann G. Mahony (2)
 Marguerite Whalen Marrano (2)
 Lois Hertzberg Nevitt (3)
 Fran Pomerantz (2)
 Clarissa R. Quinley (2)
 Randie G. Roth (1)
 Gwen Herstad Runge (1)
 Marcia Packer Schechter (2)
 Susan Solmonson (2)
 Mary M. Talbot (2)
 Laura D. Tinker (3)
 Aphrodite Tsoumas (1)
 Robin Cummings Waters (1)
 Sally Brenner Willis (3)

1974 — 20%

Average gift: \$9.08
 Agent: Mary Lally
 Melody MacInnis Bearfield (1)
 Gayle Kaufman Blumenberg (1)
 Judith Pearson Boyson (2)
 Susan Pennini Bradley (2)
 Rhonda Stein Casper (2)
 Pamela Caragianes Christodoulo (2)
 Jill Collier (2)
 Patricia Belisonzi Comiskey (2)
 Martha Grodd DeMoss (2)
 Julie Fawcett (2)
 Carol Creelman Fitzsimmons (2)
 Jan R. Fogel (2)
 Susan Gilbert-Hirshon (2)
 Janie Glantz (2)
 Judith Ney Golb (2)
 Mary E. Grassi (2)
 Patricia Curcio Guliani (1)
 Maureen Healy (1)
 Beverly Hinckley (2)
 Joyce Zaia Humphrey (1)
 Christine Cannell Jones (2)
 Ilda Carreira King (2)
 Barbara Kirschenbaum (1)
 Bonnie Kraemer (1)
 Mary Lally (2)
 Caroline Deloury Lequin (2)
 Joanne McCormick Leverone (2)
 Lori Stein Mishcon (1)
 Margaret MacVane Murray (2)
 C. Leigh Myers-Shaffer (2)
 Cynthia Kaloyanides Paleologos (1)
 Ellen Rodman (2)
 Leslie Ross (2)
 Laurie Rubenstein (2)
 Pamela Covert Sheehan (1)
 Mary Ann Stanton (2)
 Cheryl Winn Tikenoff (2)
 Carole Vena (2)
 Mary Verrastro (2)
 Nancy Zuber (1)

1975 — 19%

Average gift: \$7.95
 Agent: Karen Tuzzolino
 Lynne Abramowitz (1)
 Joyce M. Abrams (1)
 Ann Tieger Baker (1)
 Amy Bishins (1)
 Joyce Blake (1)
 Vivian Palumbo Boland (1)
 Grace Levern Brown (1)
 Joyce M. Clougher (1)
 Susan Constant (1)

Ami Dunham (1)
 Lois Farrell (1)
 Risa Grossman (1)
 Rosemary Hannon (1)
 Susan Filo Hardy (1)
 Jo Ann Corapi Haynes (1)
 K. Michael Hillery (1)
 Nancy Larsen (1)
 Meredith Leonard (1)
 Amy G. Levin (1)
 Karen F. Lewis (1)
 Jennifer Lyon (1)
 Susan Mayhew (1)
 Martha McDowell (1)
 Judith Smith Melby (1)
 Anne Meringoff (1)
 Lynne A. Molnar (1)
 Carol Bradley Moore (1)
 Cynthia Newkirk (1)
 Clare M. Nutt (1)
 Moira O'Connell (1)
 Liane Phillips (1)
 Michelle Ganier Rogers (1)
 Robin S. Rogers (1)
 Ramona Romanuskas (1)
 Beverly Shea (1)
 Ellen Shea (1)
 Alison Post Spikell (1)
 Susan Strouse (1)
 Laura Garvin Townsend (1)
 Karen Tuzzolino (1)
 Kim Wallace (1)
 Kathryn Wasserman (1)
 Sharon Berger Weiler (1)

GRADUATE SCHOOL

1956 - 71G — 28%

Average gift: \$16.38
 Agent: Elizabeth Klaiman '65G
 Patricia Shaw Davis '56G (1)
 Persis Gallion '56G (1)
 Rhoda Freed Mann '58G (5)
 Anne Sockol Segal '58G (2)
 Doris Donnine Bayes '59G (5)
 Elma Chickering '59G (1)
 Edith McQuaid '60G (1)
 Priscilla Wilder Ambrose '62G (3)
 Janet C. Robertson '62G (2)
 Maxine Bunch '63G (1)
 Nancy Staudinger Haynes '63G (5)
 Dorris Stewart '63G (2)
 Elizabeth Klaiman '65G (5)
 Joan Laverty Murphy '65G (1)
 Judith Musa '65G (1)
 Judith Edwards Norton '65G (3)
 Susan Brown Smith '66G (5)
 Lynne Shamburger Kramlich '67G (5)
 Elinor Morrison '67G (1)
 Louise Lane Parker '67G (2)
 Joan Pattison Sheehan '67G (1)
 Joyce Spencer '67G (3)
 Katherine Dobbie '68G (2)
 Irene Pearson Doughty '68G (5)
 Donna Evin Messer '68G (3)
 Paula Lawson Miller '68G (1)
 Elizabeth Stern Greenwald '69G (2)
 Ann Kasameyer '69G (1)
 Patricia Nesson Marlin '69G (2)
 Rinah Abramson Mullens '69G (1)
 Sylvia Davis Vatalaro '69G (1)
 Sandra Cook Banda '70G (2)
 Cathy Caro-Bruce '70G (1)
 Ellen Cotter '70G (2)

Lee Doodlesack '70G (1)
 Joyce L. Gudeman '70G (5)
 Lynda Killkelley '70G (5)
 Elaine Reisman '70G (2)
 Mary Dinnis Taylor '70G (2)
 Joanna Priest Walsh '70G (1)
 Diane Baptiste Williams '71G (1)
 Nancy Swenson Abercrombie '71G (1)
 Marcelle T. Gianelloni '71G (1)
 Joan Kaiser Hubball '71G (1)
 Wendy Hyatt '71G (2)
 Ruth Keyes '71G (2)
 Grace Thompson '71G (1)
 Joan B. Warner '71G (1)

1972G — 31%

Average gift: \$10.29
 Agent: Deborah Wainer Abrahams
 Deborah Wainer Abrahams (4)
 Mary T. Buchanan (2)
 Sr. Julianne Burns (1)
 Susan Clark (2)
 Eileen Cunningham (1)
 Marilyn Fishman (1)
 Emily Goldfarb (1)
 Ann C. Hardenbergh (3)
 Christine Hotarek (1)
 Anita Meyer (2)
 Florence Holmes Norton (1)
 Carolyn Pulvirenti (3)
 Linda Sands Rothrock (2)

1973G — 23%

Average gift: \$7.32
 Agent: Linda Diskin
 Ruth Anderson (3)
 Marcy Bienen (1)
 Patty Blosten (1)
 Barbara Brickman (3)
 Roberta M. Buccitelli (1)
 Patricia Cobb-McMillan (1)
 Joanne Ziebarth Corbett (1)
 Pat Cornu (3)
 Johnna Stinson Crosby (1)
 Jean R. Dignan (2)
 Nancy J. Driscoll (1)
 Nancy Towle Farrar (2)
 Leslie Ogan Goldberg (2)
 Hinda Entenberg Goodstein (2)
 Barbara Govendo (2)
 Margaret Gregorie (2)
 Jean Jewett (3)
 Judith Goldhammer Kates (1)
 Patti Koenig (2)
 Patricia Laliberte (1)
 Claire Liversidge (2)
 Geraldine Lynch (2)
 Nancy Widmer Madden (2)
 Nancy Marcus (2)
 Suzanne Regier Marshall (2)
 Elinor Parker (2)
 Wendy Dubins Perlmutter (2)
 Linda Picceri (1)
 Zelda Rubenstein (1)
 Amy Shulman (1)
 Kathleen Stern (1)
 Virginia Wadsworth (2)
 Cynthia Wehling (2)
 Ted Zalewski (2)

1974G — 26%

Average gift: \$9.38
 Agent: Ruth Fellman Block

Lillian Backman (2)
 Alexis Barron (1)
 Susan Beaver (1)
 Brian F. Berkowitz (1)
 Ruth Fellman Block (2)
 Mary Brayton (2)
 Lorraine J. Brown (1)
 Louise Cadot (2)
 Jeanette R. Caldarone (1)
 Anne Chisholm (2)
 Janet Damelin (2)
 Nancy DeMarneffe (2)
 Joanne Ettenson (2)
 Carolyn Fellman (2)
 Carolyn E. Fish (2)
 Ellen Gogolick Freeman (1)
 Susan Gaffney (2)
 Ellen Sivack Gannett (2)
 Dore Gardner (1)
 Stuart Goldstein (2)
 Sarah Greenblatt (1)
 Beverly Uze Greenblatt (1)
 Nancy Warner Hanna (2)
 Anne Hayden (1)
 Marsha Hess (1)
 Marjorie Homonoff (2)
 Isabel Jankelson (1)
 E. Dianne James (1)
 Barbara Joyce (2)
 Lynne Kimball (2)
 Patricia Lauridsen (2)
 Jean Lawler (2)
 Judy L. Mallanik (1)
 Sandi Manning (2)
 Dena Markarian (1)
 Mary Bradford Marz (1)
 Jeanne McGowan (1)
 A. Leonard Newman (1)
 Vicki Frischer Novick (1)
 Shane O'Neill (2)
 Beverly Rissman (2)
 Barbara Rissman (2)
 Brenda Roberts (2)
 Susanne Sandberg (1)
 Ellie Shacter (1)
 Toby S. Segal (2)
 Judith Siemen (1)
 Rose Skirkey (2)
 Phil Snead (2)
 Charlotte Sorenson (2)
 Catherine M. Stone (1)
 Polly Orr Talbot (1)
 Mary McNiff Tierney (1)
 Joan Turner ('74CE) (1)
 Margaret A. Viets (2)
 Vivian Vining (2)
 Julia Abernethy Wallace (1)
 Jane Abrams Walsh (1)
 Marianne Poritzky Weinheim (1)
 Dorothy Wippert (1)
 Anne Wurman (2)
 Virginia Hoey Watt (1)
 Barbara Younger (2)

1975G — 17%

Average gift: \$7.56
 Agent: Joanne DiMattia
 Marilyn Abel (1)
 Jane Aibel (1)
 Linda Ashcraft (1)
 Ruth Beckwith (1)
 Patience Bennett Berkman (1)
 Nancy Martin Birenbaum (1)
 Victoria LeBel Bottomley (1)
 Benjamin B. Braasch Jr. (1)

Jennifer Braverman (1)
Ellan C. Budd (1)
V. Jane Cohen (1)
Linda C. Cohn (1)
Gail Colozzi (1)
Annik Conover (1)
Carol Cook (1)
Nancy P. Damon (1)
Teresa DiGiovanni (1)
Joanne DiMattia (1)
Christine Dion (1)
Nancy Scheib Edwards (1)
Jan Eisenhower (1)
Ann Taggart Evans (1)
Priscilla Fales (1)
Doreen A. Feldman (1)
Wendy Friedman (1)
Marcia Cote Fry (1)
Brenda K. Giegerich (1)
Beth Goldstein (1)
Ellen R. Jaffe (1)
Betsy W. Johnson (1)
Bernice Lewiton (1)
Ormsby Matthiessen (1)
Ann M. McCarthy (1)
Tashia Morgridge (1)
Esta H. Nickinson (1)
Dorothy S. O'Neil (1)
Anita R. Perry (1)
Mary Piret (1)
Verena Rybicki (1)
Joanne Sassone (1)
Rosemary Schorr (1)
Lillis W. Schuessler (1)
Suzanne Sigman (1)
Betty J. Sjostrom (1)
Beverly Smith (1)
Joan M. Stolfa (1)
Elizabeth Summers (1)
Mary L. Van Dusen (1)
Virginia Wagner (1)
Ellen C. Weathers (1)

1976G

Average gift: \$11.80
Twinkle Bowditch ('76A)
Kathryn Copplestone
Wendy Flaschner
Terri Reisman
Betsy Ruffle

HONORARY ALUMNI

Joan Blake
Alma MacCormack
Barbara C. Wickson

ADDITIONAL GIFTS

Alumni Association Scholarships
Anonymous
Class gifts

PARENTS OF CURRENT STUDENTS

1976:
Mr. Connie S. Maniatty, Chairperson
Mr. Francis X. Bush
Mr. Simon Goldberg
Mr. Robert A. Kenkel

1975-76 DIALATHON VOLUNTEERS

Chairperson May Hogan '26
Laura Ahrens '76
Mary Felton Baruffaldi '49
Florence Bent '78
Elaine Bernstein Berman '68
Joan Blake
Ellen Green Bloch '61
Lisa Breger '77
Marilyn Sargon Brier '66
Patti Briggs '77
Pam Brown '77
Patti Carlan '77
Frances Cronin '31
Terry Crosswell '79
Maryann Dorgan Denninger '73
Joanne DiMattia '75G
Gail Roberts Dusseault '60
Leslie Fabian '77
Diane Labell Feinzig '58
Dennie Fitzpatrick '76
Mary Greene Freeman '29
Joyce Goldberg '78
Laurel Harrison Goldstein '42
Mary Condrakes Gornatos '47
Cindy Gordon '78
Mary Grassi '74
Joyce Grossman '76
Holly Guy '77
Pattie Hancock '76
Joan Harrington '78
Margie Kahn Henzi '70
Cindy Jury '76
Sarah Joyce '76
Brenda Kantor '77
Rosalyn Cohen Kaufman '63
Debbie Kavalos '77
Betty Klaiman '65G
Mary Lally '74
Pattie Laurie '77
Debbie Levine '77

Ann Levy '77
Mollie Bromfield Lipham '33
Debbie Littell '76
Trudy Vernon Magid '42
Ginny Malakie '78
Virginia Maloney '65
Jo Malva '49
Jill Miller '76
Helen Moskowitz '79
Judy Murray '76
Dolores Glasser Orkin '63
Julie Paige '76
Amy Pomerantz '77
Mary Ann Rapoza '77
Joyce Rappoport '78
Fay Hurley Robbie '49
Carol Ross '77
Selma Freede Rudolph '41
Nancy Salk '76
Pam Sandler '77
Helaine Finkel Saperstein '62
Frances Pearl Schaffer '30
Barbara Barron Schilling '50
Nunzi Scola '76
Lynn Selover '76
Lorraine Blondes Shapiro '42
Audrey Spiro '77
Marcy Stempler '78
Joan Lubow Stone '64
Margie Stone Tanzer '64
Susan Tapper '74
Nancy Bluestone Tofias '56
Nancy Vogler '70
Jolynn Wade '76
Betsy Wallace '78
Anne Sampson Watson '55
Heidi Winkler '76
Pam Worth '77
Chris Wright '76

Mr. Dale F. Oliver
Mr. Samuel Sepinuck
Mr. Robert B. Turner
Lt.-Col. Emil Verrilli

1977:

Mr. Nelson S. Burbank, Chairperson
Mr. Nelson S. Burbank
Mr. Everett S. Glenney
Mr. John Lyman, Jr.
Mr. Sidney Sandler
Mr. John VanSyckle

1978:

Mr. George S. Chase, Chairperson
Mr. George S. Chase
Mr. Cyril W. Downs, Jr.
Mr. Gerald Gouchberg
Mr. Howard A. Kallusch
Mr. Bernard J. Pollack
Dr. Samuel Spencer
Mr. Gerald L. Stempler
Mr. Sears C. Winslow

1979:

Mr. John D. Williams, Chairperson
Mr. James Andros
Mr. John J. Cuadrado

Mr. Albert S. Frager
Mr. Lawrence E. Kelley
Mr. Daniel A. Leone
Mr. Raymond R. Ross
Mr. Gilbert E. Smith
Mr. John D. Williams

PARENTS OF GRADUATED STUDENTS

Mr. Ralph L. Rose, Chairperson

1975:

Mr. James W. Chadwick
Mr. Irving Gladstein
Mr. Jerry Slivka
Mr. Richard Stiner
Mr. Heinz G. Zuschlag

1974:

Dr. William Abesh
Mr. Bernard H. Dresner
Mr. Stuart E. Hertzberg
Mr. Joel S. Kirschenbaum

1973:

Mr. K. Richard Johnson
Mr. Laurence Lapp

1971:

Mr. Benjamin Lederman
Mr. Sterling A. Wilson
Mr. Morton Wolman

1970:

Mr. Harry Greenberg
Mr. Lester Sobin

1968:

Mr. Edwin B. Coghlin

1967:

Mr. William Holzman
Mr. Louis Rogoff

1966:

Mr. Alvin H. Fine
Mr. Myer Gootkin
Mr. Harold B. Sharkey
Rev. Alfred Vail

1965:

Mr. William A. Straub
Mr. Irving Triber

1964:

Mrs. Henry S. Wells

1962:

Mr. Maurice E. Bale
Mr. John M. Galway
Mr. Adolph Perlroth II

1961:

Mr. Harry Hruska
Mrs. Bernard Kaplan
Mr. Louis Marshall

FACULTY AND ADMINISTRATION

Vaughan Black
Avis Brenner
Albert Brower
Judith Campbell
Jane Canfield
Harold Conner
Paul Fidler
Michael Fosburg
Susan Friel
Caroline Harvey
Sylvia Hurwitch
Jack Joyce
Gwenn Legters
Robert Lewis
Donna McGrath
George Miller
Margery Miller
Mary Mindess
Patricia Moore
Alan Morris
Rosemary Oliva
Don Orton
Lenore Parker
Miriam Ritvo
Nancy Roberts
Elizabeth Steig
John Tucker
Jean Whittemore
Barbara Wickson

STUDENTS

Undergraduate:

Marcy Ash '79
Laura Berkman '79
Sharon Brunswick '79
Shawn Garrison '79
Maryann Healey '79
Nancy Ilgren '79
Helen Nomicarios '79
Barbara Ray '79
Mary Ann Salvucci '79
Sheila Vara '77

Graduate:

Patricia Cerame
Virginia Ellingwood
Joan Fernbach
Emily Gregory
Lois Sockol
Margaret Tenney
Sue Williams

STUDENT ORGANIZATIONS

Class of 1976
Commuters' Club
Glennon Hall
Lord Newark Society
Peer Counseling Group
Wilson Hall

FRIENDS

Big Sister Association of Greater
Boston, Inc.
Mr. & Mrs. Joseph Boshnack
Mr. & Mrs. Spencer Daniels
Mr. & Mrs. Nathan Dinkes
Mr. & Mrs. Albert Ertischek
Mr. & Mrs. Nicholas Fontano
Mrs. Shirley Foster
Mr. William C. Foster
Ms. Faye R. Goldberg
Dr. & Mrs. James L. Hamilton
Mr. Bradley C. Higgins
Mrs. Harold E. Johnson
Mr. Serge Klimwitz
Ms. Lisa Lofchie
Mrs. John H. O'Brien, Jr.
Mrs. Murray Riederman
Mr. & Mrs. Mervin A. Savitt
Mrs. Fannie Sherr
United Commercial Travelers of
America
Bay State Council
Warren Junior High School

CORPORATE

Abreen Corporation
Accent Maintenance Corporation
Arnold's Jewelers, Inc.
Barbour Stockwell Company
Barry-Wright Corporation
The H. Blonder Company
Dimond-Union Stamp Works, Inc.
Doble Engineering Company
Dole Publishing Company
Frost & Higgins
Goddard Insurance Agency
Harvard Trust Company

International Business Machines Corp.
L.R. Electrical Company, Inc.
North Acceptance Corporation
Poley-Abrams Corporation
Raytheon Company
Richardson, Dana & Company
Rosenthal-Rubbico Associates
Sears Roebuck Foundation
Seiler's of New England
Sunrise Shop Rite

FOUNDATIONS

George Alden Trust
Edward L. Bernays Foundation
The Block-Grausman Fund
The Boston Foundation
Boston Bio-Physics Research
Foundation
Dean Welfare Trust
Joseph M. & Dorothy B. Edinburg
Charitable Trust
Exxon Education Foundation
The Clifford F. Favrot Family Fund
The E.O. & R.H. Freund Foundation
The Grolier Foundation, Inc.
Kizner Family Trust
The C. Charles Marran Charitable
Foundation
Irving M. Sobin Family Fund
The Oscar & Lillian Stempler
Foundation, Inc.
Albert O. Wilson Foundation

MATCHING GIFTS

Aetna Life & Casualty Company
Amtel, Inc.
ASARCO
Continental Can Company
Digital Equipment Corporation
ESB Foundation
Exxon Education Foundation
Exxon USA Foundation
First National Bank of Chicago
Foundation
First National City Bank
Ford Motor Company Foundation
General Electric Foundation
The Gillette Company
Houghton-Mifflin Company
International Business Machines Corp.
International Minerals & Chemical
Corp.
International Telephone & Telegraph
Corp.
John Hancock Mutual Life Insurance
Co.
The Merck Company Foundation
New England Mutual Life Insurance
Co.
Olin Corporation Charitable Trust
Phoenix Mutual Life Insurance
Company
Polaroid Foundation, Inc.
Prudential Insurance Company of
America
The Quaker Oats Foundation
Raytheon Company
Scott Paper Company Foundation
Stone & Webster, Inc.
The Travelers Insurance Companies
Uniroyal Foundation
United Technologies Corporation
The Xerox Fund

GOVERNMENT

City of Boston
766 Urban Practicum
Chapter 636, Section 8
Magnet School Facilities
Hennigan Community School
Commonwealth of Massachusetts
Public Law 89-313
Title I-ESEA
Project #EDMA 76-16
Commonwealth of Massachusetts
Public Law 89-313
Title I-ESEA
Project #EDMA 76-33

COMMEMORATIVE GIFTS

In Memory Of:

Dr. Samuel Allentuck
David Bailit
Father of Mrs. Leonard Bovarnick
Mary Lou Cataldo '52
Mother of Mrs. Debra Cohen
Mary Wilson Connell '26
Father of Mr. Harvey Creem
Samuel Cutler
Mary Ann Everett
Moe Fishman
Father of Dr. Harold Goldstein
Lydia Jane Holzman '67
Bernard Kaplan
Abraham Keller
Elizabeth R. Kenkel
Alma Allison Kerr '13
Deborah Jean Leone '79
Father of Mr. Peter Levangie
Gordon MacIntyre
Mrs. Delphine Primm
Father of Mr. Mel Sciuto
Judge Elias F. Shamon
Ms. Bailey Shapiro
Barbara Shinn '51
Sara Tinker
Father of Mrs. Robert Vachon
Genevieve H. Wilson
Mother of Ms. Irma Zieper

In Honor Of:

Carol Allen
Kate Melanie Orton
Joyce M. Snyder '61
Kathy Wimmatt

CAPITAL GIFTS

TRUSTEES

Robert W. Fawcett
C. Charles Marran
Jack T. Schwartz
Robert Tonon

CORPORATORS

Erwin H. Blonder
Donna Tufts Hopkins '52
Mary McCarron Mead '25
Ralph L. Rose

ALUMNI

Ruth Kelley Thompson '29
Helena Cavanaugh Austin '36
Ruth Loftus Tunnicliffe '39
Thelma Crossman Whitcher '39
Mary L. Hood Harvey '43
Mary O'Brien Moylan '51
Patricia Alexander Bruce '53
Nancy Coleman Cummings '53
Dorothy Ulian Gorodetsky '54
Marjorie Kraft Goren '56
Audrey Belson Meline '58
Lucille Martel Huggins '59
Mary Lou White DeNardis '60
Diane Sharp Hadelman '60
Judith Hurley Machado '60
Linda Kane Edgar '62
Joan Perlroth Gelpey '62
Sheila Kearns O'Reilly '63
Jane Finberg Mandell '64
Judith Ravelson Shriber '64
Joan Lubow Stone '64
Francine Braddon Tanenbaum '64
Pamela Hall '66
Jean-Ann Heide '66
Julie McEnaney Quinn '66
Barbara Bradley '68
Francine Dreier '68
Joanne Heap Hunt '68
Vivian Vacarro Nelson '68
Carol Reissman Blum '69
Elaine Kleinbart Liebesman '69
Jo-Anne D'Amato Lyons '69
Marjorie Sack Winnick '69

PARENTS

Mr. Philip T. Cohen P73
Mr. Connie S. Maniatty P76
Mr. William F. Nolan P75
Mr. Samuel Steinman P61
Mr. Arthur T. Wallace P78

FACULTY AND ADMINISTRATION

Helga Braein
Jane Canfield
Arthur Lee
Patricia Moore
William L. Perry
Miriam Ritvo
Joyce Snyder
Elizabeth Steig

STUDENTS

Lord Newark Society
Student Council Association

FRIENDS

Mr. Clifford Johnson

CORPORATE

Seiler's of New England
TRW

FOUNDATIONS

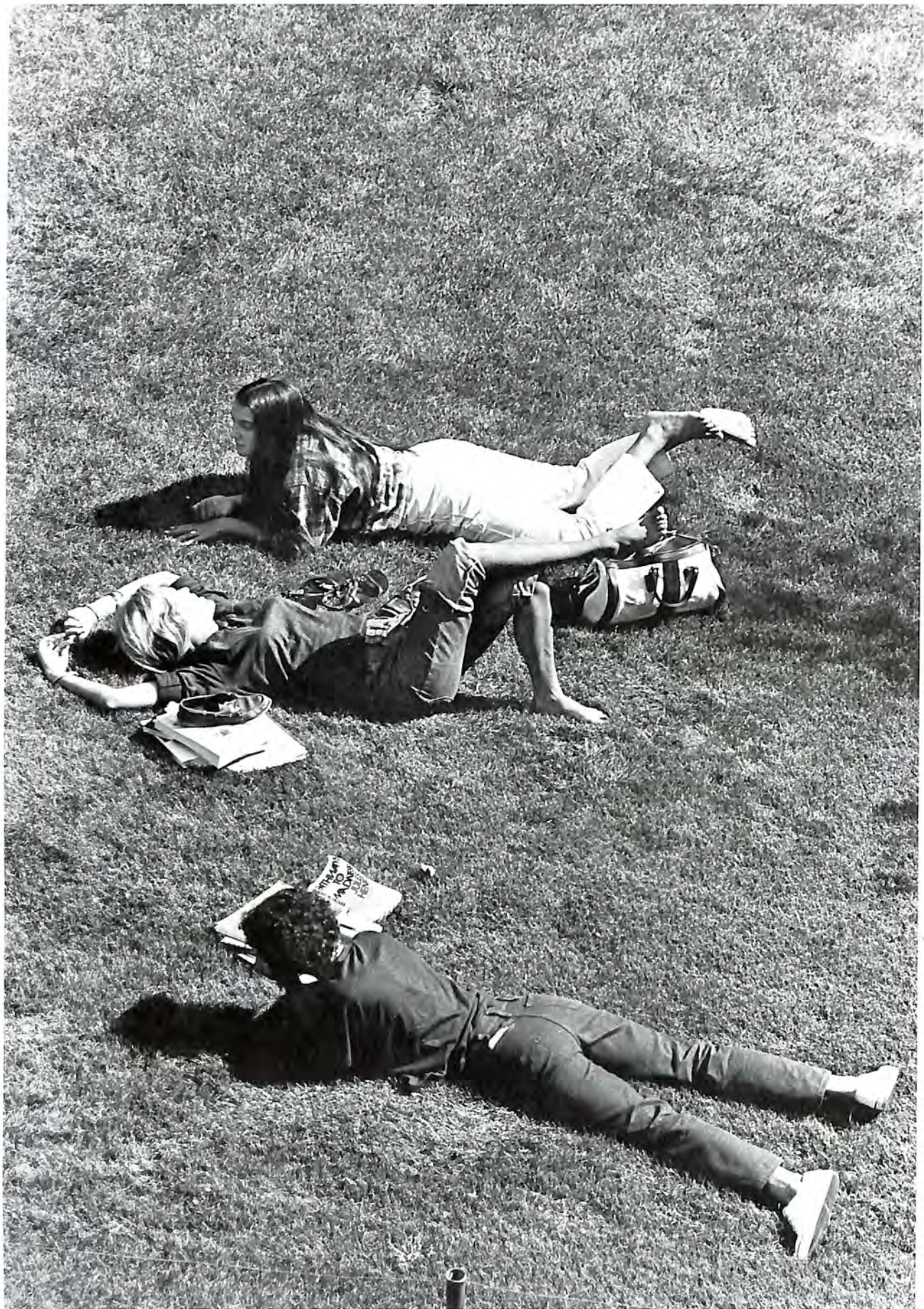
Charles Hayden Foundation

MATCHING GIFTS

Abreen Corporation
Hercules, Inc.
The 1907 Foundation

COMMEMORATIVE GIFTS

In Memory Of:
Vincent R. Herterick
Marie Holt Munson '40



Update!

Please update my file to include these changes:

☐ Moving

☐ Marriage

☐ Birth

☐ Other

Name _____ Class _____
please include name at graduation

Address _____ Phone Number _____

City _____ State _____ Zip _____

Spouse's Name _____

News (photos are welcomed) _____

7/76

Please return to the Alumni Office, Lesley College, 29 Everett Street, Cambridge, Massachusetts 02138.

**The
Current
Lesley College**

29 Everett Street
Cambridge, Mass. 02138

Address correction requested

NON-PROFIT ORG.
U.S. POSTAGE
PAID
BOSTON, MASS.
PERMIT NO. 20