

Lesley University

DigitalCommons@Lesley

Lesley College Current

Special Collections and Archives

Summer 1985

Lesley College Current (Summer,1985)

Lesley College

Follow this and additional works at: https://digitalcommons.lesley.edu/lesley_current

Recommended Citation

Lesley College, "Lesley College Current (Summer,1985)" (1985). *Lesley College Current*. 32.
https://digitalcommons.lesley.edu/lesley_current/32

This Book is brought to you for free and open access by the Special Collections and Archives at DigitalCommons@Lesley. It has been accepted for inclusion in Lesley College Current by an authorized administrator of DigitalCommons@Lesley. For more information, please contact digitalcommons@lesley.edu, cvrattos@lesley.edu.

The LESLEY COLLEGE
CURRENT

Summer 1985



Lesley's New President

Lesley's New President

An Interview with Margaret McKenna



(The following is an interview that Kathryn Furlong, Editor of *The Current*, held with Lesley's new President, Margaret McKenna.)

KF: Because you're Lesley's first new president in 25 years, I think the alumni and the Lesley community would like to know more about you and your plans for Lesley. Would you tell us your goals for your first year here at Lesley?

MM: My goal is to learn more about the institution, to understand what exists now, to strengthen its weaknesses, and to find ways to enhance a tradition of excellence and innovation. I intend to consult with the trustees, alumni, and Lesley community to define our mission more clearly. I would like to bring a closer coordination and cooperation among the three schools so that we build on one another's strengths. Some of my time will be spent telling the Lesley College story and strengthening ties with the alumni, with the academic community, locally and nationally, and explaining our goals and programs to foundations and other potential donors to the institution. We need to show potential students, the academic community, and the public what Lesley has to offer.

KF: So you're talking about more communication within Lesley and with the alumni.

MM: Both communication and cooperation internally and communication externally are very important.

KF: You talk of closer collaboration among the three schools. Do you have any feeling about student services?

MM: Schools are about students and I place a very high priority on student services. I hope that there will be more cooperation among the three schools in terms of finding ways to do joint programs. One of the reasons to come to an institution with a graduate school is to have access to the graduate faculty and the graduate students. There are programs we can strengthen or initiate which could enrich the lives both of our undergraduate and graduate students.

KF: Do you expect to be involved with fundraising?

MM: It is a fact of life that a significant percentage of a college president's time today is devoted to fundraising. I actually welcome the opportunity. I am excited about Lesley and its potential, and I am anxious to formulate an image of Lesley and to carry that image to donors, because I feel we have a great deal to offer. It is exciting to raise funds for something you really believe in.

KF: You talked earlier about doing something about the mission statement.

MM: Lesley has grown enormously, particularly during the last ten years. It is time to look at what we are doing and to relate that to what we are, where we are going, and what we want to be. There may be some things we're doing, maybe everything we're doing, which fit into a mission which we are comfortable with, and there may be some things that do not. We want, in terms of long-range planning, to decide what the mission of Lesley is today and what it will be ten years from now, and then make decisions based on that mission. A mission statement is difficult because it not only says what we are, it also says what we are not. An institution is not all things to all people. I do think there are themes and strengths at Lesley that clearly fit into a mission. It is essential that we spend time defining that clearly.

KF: Do you have any thoughts on the academic area?

MM: We can be very proud of some of the academic programs. I think we need, however, to do several things. One, make sure that all of our programs fit comfortably within our mission. Second, make sure that there is consistent quality in all of our programs. Third, make sure that there is no duplication of effort in the three

schools or a gap in our programs. An overall look at the quality and the consistency of the curriculum will definitely be a priority on the agenda.

KF: Do you have long-range plans for Lesley?

MM: At this point I think it would be presumptuous to have a clearly defined list of long-range goals. Certainly in the future I would like to see Lesley a name that people recognize, that they think of in connection with exciting pedagogy and adult learning, the best methodology in early childhood education, and innovative management programs. But to say now what I think Lesley should be in ten years — ask me again in a year. I want to spend some time talking with the community about what it is we want to be ten years from now.



Margaret McKenna, Deputy Under Secretary of Education, at Shirley Hufstедler's Installation as Secretary of Education in 1980.

KF: You are an attorney, a civil rights activist, and a champion of women's rights. What led to your interest in higher education?

MM: I come from a family of educators. My parents are teachers, my father was a superintendent of schools, four of my six aunts are teachers, and my sister is in education, so I was born into education. In fact, I was practically the only renegade of

(Continued on page 2.)



In 1978, as Deputy Counsel to the President, Margaret McKenna aboard Airforce One with President Jimmy Carter en route to Senator Claiborne Pell's home state of Rhode Island.

Lesley's New President



(Continued from page 1.)

my generation who did not go straight into teaching. Over the last fifteen years I have enjoyed the opportunities I have had to teach at the undergraduate and graduate levels. I serve on a Board of Trustees of a college and was the Deputy Under Secretary in the Department of Education. Education is a lifelong interest which has changed from an avocation to a full-time vocation.

My years at Radcliffe as a senior administrator were also helpful, particularly my position as Director of the Bunting Institute. My contact with faculty members from all over the world was a great learning experience. Each week I listened to a different Fellow talk about her work in progress. I had the opportunity to learn about diverse academic fields and disciplines, as well as about the ways their institutions are run. My four years made me a strong advocate of faculty development. I saw what a difference it made in an individual's life and what contributions it made to the world of scholarship.

KF: Also, your many professional affiliations, awards and honors, appointments, and publications are impressive. For example, you were White House representative in 1979 to the U.S. Trade Mission to China and Head of the U.S. Education Delegation of the UNESCO Annual Conference in Yugoslavia in 1980. Lesley, of course, has international students and programs. Do you think the international area at Lesley should be broadened at all?



At a meeting on civil rights issues in the White House, Margaret McKenna with Coretta Scott King (widow of Martin Luther King, Jr.) and President Jimmy Carter.

KF: You have also had a rich and varied career in Washington and most recently at Radcliffe as Vice President for Program Planning and as Director of the Bunting Institute. Would you like to talk briefly about these? Do you feel they have provided a rich background for your present position as president?

MM: Absolutely. I moved from the practice of law into administration and public policy, particularly higher education policy. While I was in the White House I worked on issues of education, human services, civil service reform, and management problems — all areas in which Lesley is prominent. In the Department of Education I served as part of the senior management team, drafting the Education Bill, defining the priorities and responsibilities of the Department, and formulating its budget. I gained a national perspective which should be helpful in defining the institution's role in the world of learning.

MM: I would like to learn more about the international programs here because I am very interested in and committed to international education. We need to have more teachers in our schools and managers in our businesses and associations who understand international affairs and communication between peoples of different cultures. I think Lesley's international programs are unique and should be strengthened.

KF: Did you go to China?

MM: Normalization with China was January first, 1979. Our delegation flew to Beijing in March 1979 to meet with the Premier and other government leaders and work on trade agreements. It was a very exciting time and I hope to return. A Fellow at the Bunting Institute last year was from the People's Republic of China. I spoke with her recently about potential cooperation between her academy in Beijing and Lesley College.

KF: On a more personal level, I think many of us wonder how you have so successfully combined a family and a profession. Could you give us a helpful hint? You've just had a new baby.

MM: We had a baby the end of May, and we have a five-year-old. It's a fine juggling act. One makes a lot of day-to-day decisions about what you can do and what you can not. I fortunately have a spouse who believes in participatory parenting. He has what some people consider a strange idea that he's as much a parent as I am and that helps me have a career as well. Also we're very lucky, we have the economic means to have the kind of

support we need. We have someone who has lived in our home for four years who helps with our children and household and who has become part of our household. I do not set myself up as the example or the model because most women do not have the support system that I do. My first child was born when I was thirty-five. I was the Deputy Under Secretary of Education, a position where I could make decisions about my own hours, flexibility, and time. I could come in and out of work, even when the baby was weeks old. Most women do not have that kind of flexibility. Integrating career and family is not easy for women or men, but in terms of the support systems that are necessary, I have had the best of them.



Margaret McKenna with son Michael and husband Arnie Miller after receiving an Honorary Degree from Regis College, in 1981.



Margaret McKenna at the Great Wall in China in 1979.



Margaret Burnham received an Honorary Doctor of Humane Letters degree at Lesley's May Commencement for her "outstanding contributions to the cause of world freedom and justice . . . as a dedicated leader in the fight against apartheid in South Africa and against discrimination everywhere." Ms. Burnham will be a Fellow at the Bunting Institute in the Fall.

Commencements



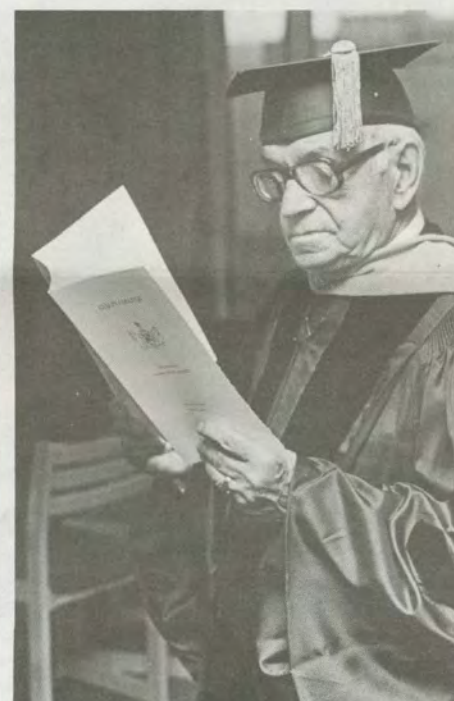
Christina Reardon, recipient of the Wolfard Award "in recognition of her academic achievements, leadership, and her potential as a valuable citizen and member of the teaching profession."



At the May 18 Commencement, 672 graduates from Lesley's three Schools – the Undergraduate, the Graduate, and Programs in Management for Business and Industry – were awarded degrees. Dr. Thomas Cottle (center), the Keynote Speaker, was given an Honorary Doctor of Humane Letters degree for his work as "Defender of the Disadvantaged, Crusader for Children's Rights, and Successful Communicator." Dr. Cottle is a psychologist and television host of the "Good Day" Show. Applauding him are Clara Thurber, Margaret Burnham, and Acting President Robert Lewis.



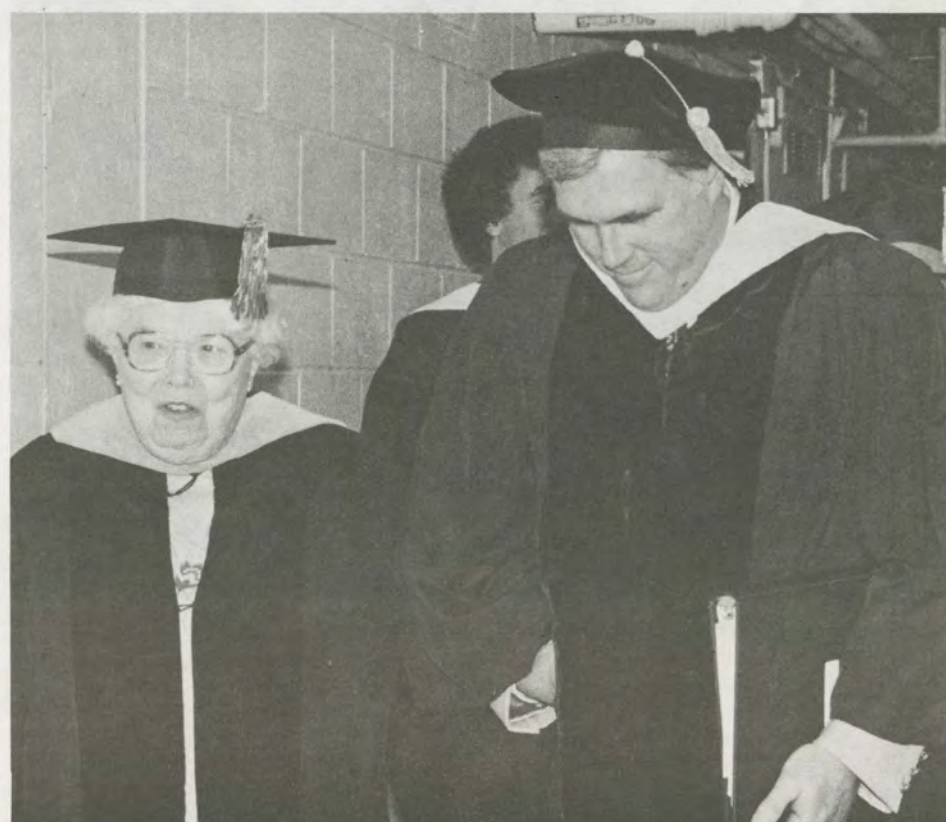
Members of the Faculties of the three Schools, the Undergraduate, Graduate, and PMBI: James Slattery, Director of Libraries; Lenore Parker, Professor of Education (UG); Miriam Kronish, Lecturer in Education (UG); Kathryn Morgenthau, Assistant Professor of Education (UG); Jerome Schultz, Associate Professor of Education (UG); Rebecca Corwin, Associate Professor of Education (GS); and Stephen Brown, Assistant Dean of Academic and Student Services (PMBI).



Julius Abrams, a Lesley Corporator since 1968.



Linda Escobedo, Vice President and Dean of PMBI, adjusts the robe of Catherine Stratton, Chairperson of the Board of Trustees.



Richard Wylie, Vice President and Dean of the Graduate School, accompanies Clara Thurber, first Dean of the College and first Vice President for Graduate Programs. She was given a Citation for having served Lesley "with unswerving dedication for nearly two decades."

Commencements



Consulting their programs before the ceremony are Susan Friel, Vice President and Dean of the Undergraduate School, Richard Wylie, Vice President and Dean of the Graduate School, Acting President Robert Lewis, and Linda Escobedo, Vice President and Dean of the School for Programs in Management for Business and Industry.



Acting President Robert Lewis and a proud new graduate.



Attending Commencement from Farmington, New Mexico, are Marri Billie, Mabel Penn, and Mae Sandoval. All were awarded Master's degrees in Counseling Psychology.



Studying her prized diploma.



A graduate of the UG School signs a friend's yearbook at the Reception in Alumni Hall.



Commencement speaker Dr. Thomas Cottle chats with a student and her parents at the Reception.

Commencements



Waiting to go on stage at Commencement to be given their diplomas.



At Threshold's May 16 Graduation, in Welch Auditorium, actor John Ritter was given a Citation for his contributions to the handicapped, particularly for his work with the United Cerebral Palsy Telethon each year. He was also interviewed on television by Dr. Thomas Cottle on the "Good Day" Show.



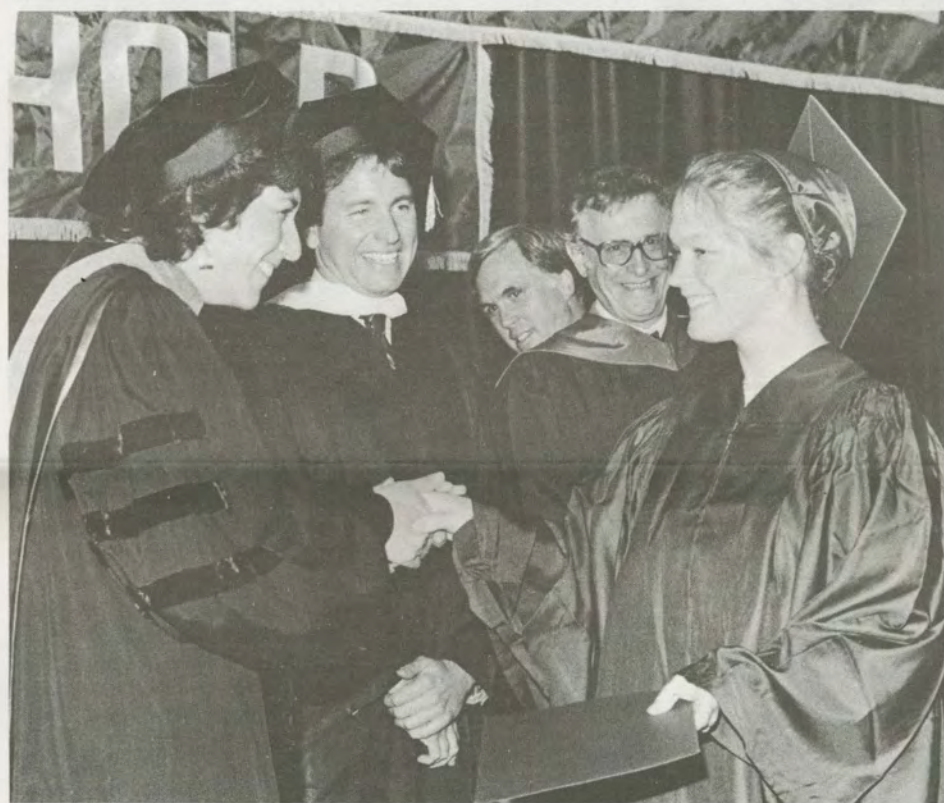
A graduate of the Undergraduate School applauds classmates.



Trustee Hollis Gerrish chats with Clara Thurber at the Luncheon preceding Commencement.



Jennifer Page, Vice President for Administration, and Dr. Thomas Cottle before the Luncheon.



Dr. Arlyn Roffman, Director of the Threshold Program, congratulates a graduate as Speaker John Ritter, Vice President and Dean of the Graduate School Richard Wylie, and Acting President Robert Lewis look on. Threshold's second graduating class of eighteen men and women received Certificates of Completion for successfully finishing two years' training toward independent adulthood. Through classes and field placement experience, students worked as aides in adult human services or early childhood settings.



Threshold students at their Graduation.

Notes of Current Interest

New Appointments

Dr. Susan Friel has been appointed Vice President of the Undergraduate School.

Susan Friel became Acting Vice President in July, 1984, following the retirement of Dr. George Miller. From 1979 until 1984, she served as Head of the Science Division. She holds academic rank as Associate Professor of Mathematics and Computer Science.

In addition to her administrative and teaching roles at Lesley this year, Susan is also Director of Staff Training for the National Science Foundation project titled "Mathematics and Sciences Technology, Teacher Education" at Bank Street College.

Dr. Linda Schulman has been appointed Division Head for Science in the UG School.

From 1975-79, she taught in both the Undergraduate and Graduate Schools. In 1979 she joined the full-time faculty in the UG School and is currently Associate Professor of Mathematics. She served as Acting Division Head for Science for the 1984-85 academic year and as Chairperson of the UG Assembly.

Virginia Cronin joined Lesley in August as College Registrar. She was previously Director of Records and Registration at Essex Community College in Baltimore County, Maryland. Prior to that, she was Registration Manager at the Smithsonian Institute, Registrar at Community College of the Finger Lakes in Canadagua, N.Y., and Registrar at Gram Junior College in Boston. Ginny has a B.S. in Education from Boston State College and an M.S. in Speech and Theatre from Emerson College.

Also joining Lesley in August is **Alice Diamond** who is the College's new Director of the Career Resource Center. She was Director of Career Planning at Wells College, Aurora, N.Y. Previously, she had been a high school psychologist in Haverford, PA, and a research assistant at the School of Industrial and Labor Relations at Cornell and at The Child Study Institute at Bryn Mawr. Alice has an M.S. from the School of Industrial and Labor Relations at Cornell University, an M.A. in Human Development and Counseling from Bryn Mawr College, and a B.A. in Psychology from Colgate University.



Mrs. Dixie Wonders, Acting President Robert Lewis, and Trustee Jack Schwartz admire former President Don Orton's portrait, painted by Melvin Robbins.

Unveiling of Don Orton's Portrait

On Wednesday, June 26, members of Lesley's Governing Boards and other guests gathered in Alumni Hall to celebrate the unveiling of the portrait of Don A. Orton, second President of the College. Acting President Robert Lewis welcomed the guests and recounted many highlights of Don Orton's 24 years of dedicated leadership and service to Lesley.

"I'm sure we all have some special remembrance which we associate with Don's presidency," he said, "and it is important and appropriate for us to share these memories which continue to inspire us. We will remember his willingness to take risks and to break conventions when it seemed prudent to do so, coupled with his commitment to fiscal responsibility and 24 years of balanced budgets. We will remember his strength and courage during the early seventies, and his encouragement and support when problems seemed insurmountable. Overall, we will remember his deep and strong commitment to innovative and quality education."

"I believe Don Orton's legacy is best characterized in terms of how he has shaped the culture at this College. A cultural anthropologist visiting Lesley would uncover a special set of cultural values Don

fostered — values distinctly different from those found at most institutions of higher education. This cultural legacy values the individual, recognizing that feelings are important in efforts to accomplish goals and solve problems. It is a culture that sets high expectations for its members, encouraging innovation, risk-taking, and individual responsibility.

"Don Orton has left an endearing legacy which will continue to shape the College, and this portrait will catalyze the memories of that service for years to come."

Following Mr. Lewis's remarks, Jack Schwartz, a Trustee of the College since 1969, added:

"Don's extraordinary vision and leadership charted an ambitious course of growth and program expansion for Lesley, shaping the vital and thriving institution that is known and respected throughout the world today."

Mr. Schwartz thanked the members of the Portrait Committee — Corporator Kathleen Fletcher, Trustees Allene Russell and Kay Stratton, and faculty members Judy Campbell-Reed and Shaun McNiff — for their hard work, as well as artist Melvin Robbins, for creating a "truly exceptional portrait." He also welcomed a special guest, Mrs. Dixie Wonders, a longtime friend of the College and the wife of the late Samuel Wonders, who for many years chaired the Board of Trustees and served briefly as Acting President.

Shortly before noon, Mrs. Wonders joined Mr. Schwartz and Mr. Lewis and unveiled the portrait of Don Orton, which will be hung permanently in Alumni Hall, joining Lesley's past leaders, Edith Lesley Wolfard and Trentwell Mason White.

Faculty

The deaths of two former faculty members saddened the Lesley community:

Margaret Pyne, Associate Dean of Special Education in the GS, died on April 14. Her areas of specialization were adult and vocational special education, and advocacy for and with disabled persons.

Nancy Woods Green, former Assistant Professor of English, died on March 26 in Sale, Cheshire, England. Dr. Green specialized in the teaching of reading and had been a lecturer in teacher education in England for nearly twenty years.

Betty Landrum, Assistant Professor of Education, has moved to Atlanta with her husband, Norris. She was an UG faculty member since 1972. She taught courses in the Education Division, supervised student teachers, and served as "tutor" for students in the Bradford Exchange program.

Marjorie Wechsler, Associate Professor of History, was awarded a Fellowship from the National Endowment for the Humanities to attend the 7th Annual Aston Magna Academy, "J.S. Bach and His World," at Rutgers University from June 16 to July 6.

Sandra Cymerman, Lecturer in Education, was appointed Director of Project Diffusion in the Framingham Public Schools, to disseminate Project Sage, a program for gifted and talented students in grades 1-5.

Paul J. Tortolani, PMBI instructor of Research, Management, and the Behavioral Sciences, and Curriculum Committee member, was promoted by Gov. Michael Dukakis to full Commissioner of the Dept. of Commerce and Development. He will prepare plans for the economic development of the state and assist in the coordination of activities of public and private agencies.

Nancy Carlsson-Paige, Assistant Professor of Special Education in the GS, is the co-author, with Diane Levin, of *Helping Young Children Understand Peace, War, and Nuclear Threat*, published by the National Assoc. of Education for Young Children.



Mary Mindess, Professor of Education, at Alumni Weekend in June.

On June 14 on WKOX-AM, re-broadcast on WVBF-FM on June 16, Lesley's programs were discussed on a live talk show by **Mary Mindess**, Professor of Education in the UG School, **Harriet Deane**, Assistant Professor of Education in the GS, and **Tim Broadbent**, GS Admissions Counselor.

Also in June, **Shaun McNiff**, Professor and Dean of the Institute for Arts and Human Development, taught art therapy courses with Professors **Norma Canner** and **Paolo Knill** at Lesley's affiliated centers in Switzerland and Sweden.



Susan Friel, Vice President of the Undergraduate School, and Linda Schulman, Division Head for Science in the UG School.

Notes of Current Interest



Eleanor DeWolfe Ludcke, '29, and Deborah Schwartz Raizes, '69, at the Student Center Dedication in May.

The Deborah Raizes Student Center Dedication

Sunny skies and balloon bouquets heralded the dedication of the Deborah Raizes Student Center on May 15. Acting President Robert Lewis and the Board of Trustees greeted more than one hundred guests, including the Lesley community, the Schwartz and Raizes families, local dignitaries, and Mary Williams, former Assistant Dean of Students Affairs, who originally proposed the idea for a Center.

Robert Fawcett, Chairman of the Student Center project, Tina Baker, '85 and President of the Student Government Association, and the late Mayor Leonard Russell of Cambridge spoke of the value to Lesley of the new Student Center and the urgently needed classrooms.

Chairman of the Board Catherine Stratton extended thanks and praise to all who participated in the Student Center project, noting in particular Jack Schwartz, a Trustee since 1969 and a generous sup-

porter of the College. He and his daughter Deborah Schwartz Raizes, '69, cut the ribbon to the handsome new Center.

Also present and especially honored was Mrs. Eleanor DeWolfe Ludcke, Class of '29, who donated the Center's cafe, lounge, and mezzanine areas which bear her name.

The guests then filed inside to a festive reception, with music provided by the Agassiz String Quartet. Later over luncheon, Paula Stahl, '68, and Elsa Sonnabend, Co-Chairpersons of the Trustees Development Committee, and Gayle Johnson, Director of Development, proposed toasts to Jack Schwartz, Mrs. Ludcke, and the sizeable roster of major donors. Crowning the festivities was Mrs. Stratton's joyful announcement of the Board's unanimous selection of Margaret McKenna to be the third President of Lesley College.

New GS Outreach Programs

The GS's Regional Outreach Division's new undergraduate and graduate degree programs for the employees of Blue Cross/Blue Shield of Mass. will begin in September.

The undergraduate program, Continuing Career Development for Adults (CCDA), will offer a B.S. in Human Services, with a specialization in Management. The graduate program will lead to an M.S. in Management, with a concentration in Health Services Management.

PMBI's One-Hundredth Class in April

In April, PMBI started its 100th class at GTE in Danvers. In recent years, PMBI has increased its efforts to build relationships with corporations throughout Mass. Statistics show that of the 100 classes that have been held since PMBI's inception in 1981, 48 percent have been conducted at corporate sites. More than half of these were donated by corporations such as Wang, Data General, Boston Edison, Computervision, AT&T, Polaroid, Honeywell, Gould, Stop & Shop, Intel, and Haverhill Cooperative Bank.

Some 90 corporations have permitted noontime, on-site meetings to provide employees with information about PMBI's two degree programs.



Trustee Jack Schwartz and daughter Deborah Raizes cut the ribbon to the new Center.



Eleanor DeWolfe Ludcke donated the Center's cafe, lounge, and mezzanine which bear her name.

Notes of Current Interest

Acting President Visits Israel

by Robert Lewis

For the past several years an increasing number of students taking their degree work in the Graduate School's Expressive Therapies Program have come from Israel.

One of the most satisfying and delightful events for me this year was to have had the opportunity to visit the Lesley/Israeli program in Tel Aviv.

I went to Israel in April with my wife Dorothy, after having received a lot of encouragement from Dr. Shaun McNiff, Dean of Lesley's Institute for the Arts and Human Development.

In Tel Aviv I had a chance to visit with the staff, faculty, and students of the Institute. More than fifty students interested in coming to Lesley attended an orientation program directed by Shaun McNiff.

Following the orientation, a reception was held for Israeli alumni who were among the most eager and enthusiastic Lesley graduates that I have ever met. At the reception alumni Ayala Yiftah and Leah Shamir read and presented me with written copies of a statement about their interest in continuing and developing an alumni relationship with Lesley. Their worthy request was shared with Hannah Roberts, Director of Alumni Relations, who is now helping establish a more formal alumni organization in Israel. Paula Ungar, Region V alumni representative, has been asked to assist them in their planning.

I look forward to having the Israeli alumni become a strong and positive part of the Association. They will add an important international link to a growing Lesley Alumni Association.

Alumnae Make A Difference in Admissions

The Alumnae Admissions Network has been working with the Undergraduate Admissions Office since the fall of 1984 to help recruit students for Lesley. Alumnae volunteers have been active in 35 states and two foreign countries. Often they are key members of their own communities and work with young people.

This year alumnae participated in various campus events for prospective students. Many also represented Lesley at College Fairs and College Nights in their communities or wrote to parents of accepted applicants. Their efforts are greatly appreciated by the Undergraduate Admissions staff.

One of the gravest difficulties facing colleges today is the decreasing college-age population. The economy, tuition increases, and reduced student aid aggravate demographic problems and limit the number of 18-year-olds who can even consider attending traditional four-year institutions. If Lesley plans to stay in the forefront, it is crucial for the College, its faculty, administrators, and alumnae to work together to increase our applicant pool.

Although Lesley has an extensive and effective recruitment process, often limited by time and budget, the Admissions Office says that no other group is as effective in supporting the College as its own graduates.

If you are interested in learning more about the activities of the Alumnae Admissions Network, or if you know a high school junior or senior who would like to receive information about Lesley, please contact Janet Cromie Kelly, Director of Undergraduate Admissions, at 29 Everett Street, Cambridge, MA 02238, or call her at (617) 868-9600, x176.



Mrs. Trentwell Mason White in front of the portrait of her late husband, Lesley's first President. Mrs. White attended Alumni Weekend in June.

Letters to the Editor

The Current is perfect from cover to cover, and I know what work went into it! You and all of your staff deserve all the praise and gratitude that I can offer from deep inside my heart. I know that all the Lesley Family will share my admiration. Thank you, dear friend,

— Alma White
(Mrs. Trentwell M. White)

I first must tell you how much I enjoyed reading the recent issue of *The Current*. I was, however, very surprised to find that Marion Dowd got credit for the "Day Girls" sketch which I did for the 1929 Year Book. I did the "Faculty" heading that year also. I might never have done either if I had left Lesley and gone to art school as Miss Sullivan had suggested.

I was so happy to see the column on Mrs. Hewitt. I don't recall whether it was Mrs. Hewitt or Miss Sullivan who had us cut snowflakes and mount them, but I still have them, also parts of a booklet of stories put together for Mrs. Littlefield's class. She was a delightful person. Dr. Knight was a dear man, I loved him and his class.

— Marjorie C. Truesdell Servis, '29

(Marjorie Truesdell Servis is correct. We apologize for not attributing "Day Girls" to her. We are, however, happy that she and so many other alumni enjoyed the last *Current* which celebrated Lesley's 75th Anniversary.)

Congratulations on the marvelous new Lesley 75th Anniversary edition of *The Current*: great coverage of the Wolfard family and their history and all the early history of Lesley! I was so pleased and surprised and so overwhelmed to find the Harvey pictures of N.H. alumni in it, too, under the class of '43. Thank you!

— Mary Louise Hood Harvey, '43



In May, Acting President Robert Lewis is presented balloons by a visiting chicken at a surprise party for him sponsored by the students.



Still holding the balloons, Mr. Lewis displays the cake given him by the students to express their appreciation for his kindness and consideration while he was Acting President during the past year. Seiler's Billy Cunningham and Vice President of the SGA Laura Rotondo, '86, will assist him when he distributes pieces of the cake to the cheering crowd of students.

1985 Alumni Weekend

1985 Alumni Weekend

by Kathryn Furlong

Starting at 3 p.m. on Friday, May 31, more than 275 alumni from Lesley's three Schools, the Undergraduate, the Graduate, and Programs in Management for Business and Industry (classes of 1925 through 1985), spouses, and friends returned to the College to celebrate Alumni Weekend and Lesley's 75th Anniversary. After a tour of the campus, they were wined and dined at the President's Reception and the Pre-Pops Supper. Then they were off to Lesley Night at the Pops for an evening of exciting music and of spirited conversation over refreshments during intermission.

On Saturday, June 1, they attended seminars, the Annual Luncheon, receptions, and the 75th Anniversary Candlelight Dinner.



State of the College Address

Saturday morning, Acting President Robert Lewis in the State of the College Address spoke about the strengths and achievements of Lesley. He said, "Our great strength is our ability to take on the future. Don Orton left us a legacy. He shaped the culture of the College that values humanism, innovation, and risk taking Our new President Margaret McKenna's vision and strengths will carry us into the future."

Other strengths, he said, are a strong and hard-working Board of Trustees, and a faculty and staff committed to innovative, quality, and person-oriented education.

And last but not least, he said, our Alumni Association has become increasingly strong and involved. It must become the major source of leadership for the College and the basis of future giving to scholarship, of recruitment, of job placement, and, most important of all, of projecting a strong image of Lesley's commitment to education and service.



One of the Saturday Reunion Receptions for Undergraduate School classes.

Alumni Council Annual Report

Geraldine Milhender Bloomberg, '61, President of the Alumni Council, expressed her appreciation to the alumni for their wonderful energy and support. She described the successful 75th Anniversary birthday parties that were held across the country this past year and credited the College with providing much support and information to the Association.

Craig Dunston, '83 and '85 PMBI, Vice President of the Alumni Council, also spoke, encouraging alumni to share their ideas for future activities with the Council.



Davida Lansky McGonigle, '65, Co-chairperson of Alumni Weekend.



Acting President Robert Lewis gives the State of the College Address. Members of the Alumni Council are on the stage behind him.



Longtime friends meet again at the Annual Luncheon: Myrtle Pierce Aulenback, '39; Althea Harris Jackson, '40; Rosamond O'Neil Wyman, '40; Jeanette Pedersen Smith, '40; Marjorie Green Stern, '39; and Barbara Brown Austin, '39. Most of them have been seeing one another often since leaving Lesley, as well as every New Year's Eve.

Evening Activities

In the evening, Reunion Receptions for the Undergraduate School Classes were held on the balconies overlooking the central campus, for the Graduate School Alumni at the Graduate Center, and for PMBI Alumni at the PMBI Building. Capping the evening was the gala 75th Anniversary Candlelight Dinner in Alumni Hall.

Davida Lansky McGonigle, '65, and Lynne Molnar, '75, were co-chairpersons of Alumni Weekend, ably assisted by a committee of sixteen alumni and by Hannah Roberts, Director of Alumni Relations; Moyra Traupe, Associate Alumni Weekend Coordinator; and Robert Holley, Assistant Director.



Lynne Molnar, '75, Co-Chairperson of Alumni Weekend.

Seminars

by Kathryn Furlong

On Saturday, alumni attended seminars that were primarily led by alumni and faculty. They covered a range of subjects that were not only stimulating but often entertaining as well.

Personal Financial Planning

Pam Caragianes Christodoulo, '74, a real estate broker in Belmont, led off the discussion by advising sellers to understand the market before seeing a real estate agent: Read *Banker and Tradesman* which lists all transactions in Massachusetts; go to the Assessor's Office and look up the assessments in your area; drive by homes in your area for comparison purposes; go to open houses and investigate the asking price and condition of these homes; fix up your home by repainting walls and "making it spic and span"; then call in the brokers. Evaluate the brokers before giving your property to one. Some undervalue it to make a quick sale. Others overvalue it. "It then sits on the market, becomes tainted, and people think something's wrong with the property." Brokers' fees range from 5-7 percent. If the buyer makes an offer, usually \$1,000 is needed as a binder. For your protection, she recommends you consult your attorney for sound legal advice.

Deanne Silk Stepner, '74, an attorney with Silk and Stepner and an Alumni Trustee, continued the discussion. She advised not signing anything under pressure till you see your attorney. Buyers and sellers should be

(Continued on page 10.)

1985 Alumni Weekend

Class of 1930
Missing in Action:
Marion Nichols Busha
Dorothy Canty Sweeney



"Personal Financial Planning" discussed by Pam Caragianes Christodoulo, '74, Real Estate Broker; Tammy Anderson, PMBI '84, Senior Trust Administrator at the State Street Bank; and Deanne Silk Stepler, '74, Attorney with Silk and Stepler.

(Continued from page 9.)

aware that a purchase and sale agreement is binding. She also cautioned that since the bank attorney protects only the bank's interests, even though you are paying all the fees, it is advisable to have your own representation.

She then went on to discuss wills. A basic, simple will costs about \$100. Unless you have one, the state will distribute your estate according to their specific guidelines, not your wishes.

For example, "If your husband dies and the property is also in the wife's name, one-half goes to the wife, one-half to the children. But if the house is in his name, the wife is then a partner in the estate with the children."

Tammy Anderson, '84 PMBI, a senior trust administrator at the State Street Bank, discussed the various purposes of trusts: education, retirement, protection of those left behind or of assets if the beneficiary is a spendthrift. A Clifford Trust, in effect for ten years and a day, is often used for education or the retirement of a parent. "The advantage of a trust is that the trustee will take care of everything," she said. People don't know when they might become disabled or senile. You don't need large sums to open a trust. You can fund it with securities or an insurance policy." In a simple trust, the bank will give the person a certain amount each quarter on the assets invested. She suggested seeing either a lawyer or a bank trust officer for specific trust information.



Toni Leoney, J.D., '80, discussed "Children's Rights: A Legal Perspective on Abuse."

Children's Rights: A Legal Perspective on Abuse

Toni Leoney, J.D. '80, Assistant Divisional Counsel in the Department of Social Services, talked about children's rights, "an explosive issue today that affects many areas." Only in the last ten to fifteen years have the legal rights of children been expanded, sometimes resulting in a collision between children's rights and parental authority. In the early sixties the battered child syndrome was identified and the child abuse statute legislated. Mandated reporters of child abuse include doctors, hospital personnel, teachers, day care workers, among others. A professional who reports a child abuse case is immune from subsequent action or liability. If, however, a mandated reporter fails to report and the child is found to be neglected, a \$1,000 fine may be levied. All other reporters are immune from civil or criminal action if they act in good faith.

Child abuse is found everywhere: in lower economic areas neglect is common; in the suburbs, sexual/emotional/physical abuses prevail but are often camouflaged.

When the Department of Social Services intervenes, it investigates and evaluates the suspected case and if the child is at risk, takes temporary, immediate custody. Within 72 hours it must get a court order, notifying parents/guardians to appear in court "to determine whether temporary custody shall continue." A social worker investigates the case and will provide "appropriate social services to the parent to prevent further injury to the child," as stated in Law 51B, Sec. 4.



"Career Options for Educators" were given by Margo Wallace, Alumni Career Coordinator at Bentley College.



a.



b.

a. Jerome Schultz, Associate Professor at Lesley, spoke on "Situational Parenting: A Close Look at the Issues of Responsibility and Power in the Life of an Adolescent."

b. "Introduction to Microcomputers and Educational Software," a hands-on experience with Richard Carter, Director of Lesley's Education Computer Lab.



Lee Ellen Marvin, Director of the New England Storytelling Center at Lesley, and alumni shared "Reminiscences of Lesley."



Also reminiscing were Winifred Lair, Professor Emeritus; Mary Wright, '56, '58G; Patricia Sweeney, '63, '76G (standing); Mary Mindess, Professor of Education; and Mrs. Trentwell Mason White.



Alumni News



Class of 1935



Class of 1950



The Candlelight Dinner

Alumni Challenge

Lesley is midway in its efforts to raise \$25,000 in new and increased gifts from alumni, as these funds will be matched dollar-for-dollar by The Boston Foundation. All alumni are encouraged to make a first-time or increased gift to the Alumni Fund before the challenge ends on June 30, 1986. Alumni who increased their gifts in 1984-85 will help Lesley qualify for additional matching funds if they make another increase before June 30.

Reunion Committee Volunteers Sought

Did you graduate in a year ending in a 1 or 6? Then your next reunion will be in 1986. Would you be willing to help plan the events and encourage your classmates to attend? If so, please contact Mary Barry in the Alumni Office.

Reunion Class Photos Still Available

Did you forget to order a copy of your class photo during Alumni Weekend? Were you unable to attend the weekend but would like a picture of your classmates? Send a check for \$12, payable to Paul Foley, Photographer, to the Alumni Office, 29 Everett Street, Cambridge, MA 02238, no later than Sept. 25.

Alumni Fund Exceeds Goal

The 1984-85 75th Anniversary Alumni Fund received a total of \$65,584, surpassing its goal of \$64,000. The College is grateful to all alumni who contributed.

Other Activities

Some alums chose to take the guided tour "Victorian Women and Their Homes" with Mary Robinson Maynard, '50, author of *Hassle-free Boston - A Manual for Women*.

Throughout the weekend Carole Orgel Einstein, '65, had on exhibition her paintings and monoprints which have gained national recognition. She was awarded "Best Painting in Show" by the Wellesley Society of Artists in 1983 and has exhibited her work at the DeCordova Museum Auction in Lincoln, the Depot Square Gallery in Lexington, and the Copley Society in Boston.

Sunday, June 2, was a free day for most to explore Boston. The Alumni Council held a meeting to plan for next year's Council activities. (See letter from President Gerri Bloomberg on page 12.)

As enthusiastic alumni departed on Sunday, plans were already being made for the 1986 Alumni Weekend, to be held May 30 - June 1. Mark your calendars now!



The Candlelight Dinner



A Toast to Lesley given by Becky Estin, Ellen Goldberg, Julia Corey King, and Lynda-Lee Baker Sheridan, all Class of 1980.



Norman Dee, Associate Professor of Education, and Acting President Robert Lewis (standing) and Mary Mindess, Professor of Education, and Karen Robinson, Dean of UG Education, (front row ends) join alums in Lesley-shirted splendor.



Alumni leaving White Hall en route to further Saturday afternoon activities.

News for The Current

Have you sent us your news? Why not do it today?

____ Class
Name _____ UG ___ GS ___ PMBI
Address _____
News _____

_____ Check if new address



Class of 1955

Undergraduate Class Notes

A Report to Lesley Alumni

By Gerri Bloomberg, '61
President of the Alumni Association

Last year at this juncture, the Alumni Council of your Association was newly elected and represented a national structure, unique in Lesley's history. There were 26 members, spanning more than 40 years of graduates, representing all regions of the country as well as the Undergraduate School, the Graduate School, and PMBI alumni. Two of our members are serving on the Board of Trustees. Some coordinate activities with the Undergraduate Admissions Office, Career Resource Center, and the Alumni Office. Others have been involved in program planning and developing events for alumni in their specific regions of the country.

Your Council was faced with the challenge of taking this very diverse group of people and creating a cohesive, motivated group that would serve as the governing body of the Alumni Association. We were fueled by the idea of what Lesley has been and what it is today — still a leader and innovator in the field of education, but carrying that fine educational expertise into human services and management.

With hard work and commitment we have reached most of our goals. Our meetings have been energetic and productive. In addition, we have had great fun getting to know one another and the College again.

We held twenty-one birthday parties commemorating Lesley's 75th Anniversary, bringing renewed excitement about seeing old friends and learning about Lesley's recent achievements. With your help, we surpassed the 1984-85 Alumni Fund goal of \$69,000.

The Alumni have had excellent input in the process of choosing our new president. One of our Council members sat on the presidential search committee and two of our Council members are on the Board of Trustees.

We established a network of more than 350 alumni admissions contacts in 30 states and 2 foreign countries for the purpose of assisting undergraduate admissions. Another link with undergraduate students was forged during the Senior banquet. Council members spoke and presented the graduating students with pens inscribed, "Lesley College Alumni Association."

Our Alumni Weekend Committee and the Alumni Office again put together a marvelous Alumni Weekend with special events, dinners, luncheons, concerts, educational workshops, and speakers. It was a fine weekend and well worth the trip back to Lesley to celebrate and be with friends.



On June 2, the Council members convened to review the past year's progress and to set some goals for the coming year. Although we still are refining our plans, some of the goals discussed were the following: (1) holding more regional gatherings that might focus on programs, lectures, workshops on current social and educational topics, as well as social gatherings (2) establishing regional chapters of the Alumni Association (3) building closer relationships between the Council and the Alumni (4) continuing to build stronger relationships with the senior class (5) developing a relationship and dialogue with President McKenna (6) developing more opportunities for alumni volunteers (7) using the Alumni Council as a resource to the college staff (8) creating an Alumni Council column in *The Current* (9) developing an Admissions Handbook to be used by alumni volunteers.

We are grateful to the College and the Trustees for the support they have given to the Alumni Association. The faculty and staff of the Undergraduate School, Graduate School, and PMBI have given many extra hours to educate us and bolster our spirits. We are particularly appreciative of the efforts of Hannah Roberts, Alumni Director, Jennifer Page, Vice President for Administration, and Acting President Bob Lewis.

To all of you wonderful alumni out there who would like some fun and meaningful involvement with your Alma Mater, please do not hesitate to contact Hannah Roberts at the Alumni Office or any of your regional representatives. If you have ideas of your own that you would like to see realized, let us know and we will try to help you bring them to fruition.

Our best wishes to all of you from your Alumni Council.

1922

Mary E. Powers is living in Marblehead and helping in the resource room at L.H. Coffin School.

1925

Mary McCarron Mead recently stopped in Winchester for a visit. She bumped into Cynthia Wilson Connor, '54, who lives in Jackson Hole, WY, and is the daughter of one of her dearest friends. Mary attended a mini-Lesley reunion hosted by Jane Cosman, '54, in Sherborn.

Gretta Becker Sauer, of Mena, AR, celebrated her 80th birthday with her 6 sons and 15 other relatives at a family reunion. Her shop Tinkers Dell Antiques and church work keep her busy.

Miriam F. York is enjoying her 20th year of retirement after 40 years of teaching.

1926

Adah L. Hill and her "bit of heaven" Hill Farm were recently featured in the *Providence Evening Bulletin*. Consisting of 165 acres, land is leased to 70 camps. Adah paints portraits and still lifes and plays classical music.

1927

Madalene Sedgwick Hubbard is retired and enjoying time with her 3 children, 4 grandchildren, and 4 great-grandchildren.

1928

Dorothy Lloyd Wilkins is recuperating after a serious illness. She recently visited friends in Southwest Harbor, ME.

1929

Helen Mather Benjamin and her husband, Philip, celebrated their 50th wedding anniversary in January.

Rachel French Packard has lived in Mansfield, OH, since 1980 near her son and his family. She is enjoying her 5 grandchildren and church activities.

1930

Bertha McConnell Foster and her husband, Leslie, celebrated their 50th anniversary in November with her Lesley roommate, Elizabeth Saunders Dunham, and Lesley friend and maid-of-honor Eleanor Smith Cutting.

Ruth Ober Wiley is retired and residing in Lynnfield.

1931

The Little Red Schoolhouse for the Retarded which Beatrice Grant Gellerson founded 26 years ago is now accredited by the Dept. of Education in Maine.

Lucille Musto Rizzo is still active in the field of education. She has been Scholarship Awards Chairman of the Mass. State Assoc. of Emblem Clubs for 24 years.

Alice Ramsdell Russell, of Auburn, ME, enjoys traveling with her husband on the West Coast and in Canada.

Alice Hagan Seabrook and her husband are enjoying their retirement in Lexington.

1932

Helen Reimer Matson celebrated her Golden Anniversary with husband Bruno in February. She has 3 children and 6 grandchildren.



Margaret Carroll Sampson, '23, chats with Hope Hackett, '88.



Sr. Edwardus Bulger, '25, and Mary McCarron Mead, '25, stop to see old friends.



Natalie Haas Pogson, '45, is joined by Polly Hum, '85, and Diana Dearborn, '86.

1933

Charlotte Hopkins Cummings is living in Manchester, NH.

Gretchen Meilicki Hyland, Lesley's first international student, lives in Vancouver, Canada. She taught for three years at the York House, a private school, and then was asked to found a school which began with 35 students and now has grown to 450. She has been married for 45 years and has 2 children. She plays cello for a senior citizens community home. Gretchen wrote, "I so well remember our chats with Edith Lesley Wolfard and Gertrude Malloch, both of whom influenced the direction my life was to take. I still tell people some tricks about dealing with small children, and credit Lesley."

Clare Murphy McGrath has a great-grandchild to add to her family of 4 children and 7 grandchildren. She writes that she is looking forward to her 55th reunion in 1988.

1934

Katherine Shelton Curtis is living in Trumbull, CT.

1935

Doris Hartwell Granger reports a busy year: "We sold our farm and 40 acres and moved 6 miles into Durham (NH)." Her summer travel plans included Oregon and Alaska. Doris and her husband enjoyed attending the Lesley 75th Birthday Party held in Keene, NH.

1938

Kathryn Tardif Housman has retired as Director of The Garden House Kindergarten and lives in Weymouth Heights.

1939

Arlene E. McLaren lives in Everett. Ruth Loftus Tunncliffe retired from the Winchester school system in 1984.



a. At the Burlington, VT, June birthday party given by Gerri Bloomberg, President of the Alumni Association, were Jennifer Page, Vice President for Administration, and Vermont alumni.

b. Merle Royte Nelson, '57, a Maine State Representative, cuts the cake at her party for Lesley in Portland, ME, on May 7.

c. Attending the Houston, TX, party in May were Connell Hughes, '80, and hostesses Roberta Mullin, Michele Pola, and Sue Levin, all '79.



b.



c.



Class of 1960



Class of 1965



Class of 1970

1940

Barbara Mitchell Howard sends us a report of a mini-Lesley reunion held in August, 1984, in Dennis for Miss Colcord's dorm. The following had not seen each other since their Lesley days: **Ginny Carter Warneck**, '39, from Chatham, **Margie Usher Whittemore**, '40, from Barrington, RI, and **Barbara from Barnstable**. **Priscilla Knoll Davis** had hoped to join the group but was unable to attend.

Mildred Wolger Howlett lives in Wakefield and works at New England Life Insurance Co.

Jeanette Pedersen Smith writes, "Where was the rest of the class of '40 at the 45th reunion? Althea, Rosie, Mildred, and I were here. Please show up for our 50th." Jeanette still enjoys music, writing, and singing. She would like someone to write her with the color of the Lesley elf that held the lantern. The original was broken and she would like to sculpt a new elf for her garden.

Rosamond O'Neill Wyman is enjoying retirement with her husband in Keene, NH. They spend part of the winter in Florida and plan summer trips and visits with their children.



Representing the Class of 1940 were **Rosamond O'Neil Weyman**, **Jeanette Pedersen Smith**, and **Althea Harris Jackson**.

1941

Ruth Solomon Sager, of Hollyhill, FL, works at Modern Realty in Daytona Beach.

1942

Ann Swensson Sharke lives in Troy, NY, where she is in her 12th year as patient representative at Samaritan Hospital.

1946

Shirley Canning McGowan is living in Belmont and is employed by MIT.

Marilyn Sunter Six has lived in Phoenix, AZ, with husband Lyle and their children for 27 years. She is a docent at the Phoenix Art Museum, giving tours to children through grade 8.

1948

Marjorie Small Kennedy lives in Newton and works for Federated Department Stores.

1952

Diane Sears Gaynor lives in Jacksonville, FL, with husband Jim and 3 children: Isabel, Jim, and Stephen. Diane enjoys volunteer work as well as acquiring and studying antiques. She would like to become a museum curator when Stephen finishes school.

Carolyn McGrath McSherry works part time for John Hancock in Braintree. Her husband, George, is a teacher representative on the State Retirement Board. Carolyn's oldest son is married, the middle son has graduated from college, and the youngest enters college this fall. She enjoys bi-monthly dinners with **Judy** and **Bruce Lewis**.

Roberta Grush Richardson's husband, Bob, has retired and opened a consulting firm in the Lexington, KY, area, as well as Boston and New York. Roberta was looking forward to a large family reunion at the Epcot Center in May and spending July and August on Cape Cod.

Audrey Furze Stark retired in June from the Mill Valley (CA) School District after 35 years of teaching grades 2-6. She plans to do career counseling, travel, and enjoy retirement with her husband.

Shirley Warren is a teacher in Worcester.

1953

Sylvia Cohen Brown teaches reading one-on-one for Literacy Volunteers. She is also coordinator for the pre-op program at JFK Medical Center, volunteers for the American Cancer Society, and the March of Dimes.

Bernice B. Chaletzky conducted a workshop at North Shore Community College on how she combines teaching and artistic talents. She is also active in professional teachers' organizations. Her paintings have been exhibited in New England, New York, and Washington, DC.

1954

Mary Ann Ryan Blackwell recently became an account executive for Braun's of Georgetown. As vice president for development for the Women's National Democratic Club she recently visited Greece and Israel as a spokesperson to meet Democrats abroad. She is also serving a three-year term on the Board of Governors. **Mary Ann** teaches "Successful Business Entertaining."

Martha A. Carroll, '57G, lives in Belmont and is employed by Waltham's School Department.

Cynthia Wilson Connor recently traveled east from Jackson Hole, WY, for a mini-reunion at the home of **Jane Geoghegan Cosman**, '54.

Jane Geoghegan Cosman hosted a mini-Lesley reunion in June at her Sherborn home. Nine alumnae and their husbands attended.

Jane D. Johnson has been recuperating from a serious illness. She continues to work for the UConn Health Center.

Lavina Dallahan Lawless is employed by the town of Canton.

1955

Barbara Rice Burkemper's daughter, **Mary**, is finishing her degree in nursing and is thinking about medical school. Daughter **Anita**, a college sophomore, plans to teach retarded children. Son **Ray** is a plebe at the US Naval Academy. **Barbara** also has 2 grandchildren.

Virginia Dmitruk Davis, of Bolton, CT, works for the Manchester (CT) public school system.

Diann Eldredge Holland reports that her son, **Steve**, is a Hollywood film director and screenplay writer. His first release, "Better Off Dead" will be released in October. He will be shooting another film this summer on Cape Cod.

1956

Eileen Murphy Madden is a resource room teacher in Boston. Her husband, **Tom**, works with the Newton Fire Dept., and their 3 children are in college.

Jacqueline Robinson Mason celebrated her daughter **Jeanette's** marriage and graduation from Univ. of Michigan Medical School in May. **Jeanette** is a pediatrics intern.

1957

Linda Weisberg Altman does volunteer research for Suicide Prevention. She has three daughters. The oldest is married and works in real estate. The middle daughter received a Master's degree in Psychology-Community Services and Mental Health from Univ. of PA. The youngest is a senior at BU.

1958

Laura Mae Carp Soloman has lived in Phoenix since 1979 with her husband and 3 children. She is a graduate student in linguistics at Arizona State Univ. Her interests are literary translation from French and Spanish, teaching foreign languages, and E.S.L.

Rosemary Silva White works for the Acton public school system.

Paula Sims Young co-owns, with husband **Simon**, the largest mail-order wig firm in the country, "Wigs by Paula." Their sales account for about 10 percent of wigs bought in the U.S. The Youngs employ more than 100 workers and fill over 20,000 orders monthly.

1959

Lois McLane Dobbyn enjoyed sharing in Lesley's 75th Anniversary celebration held in Philadelphia and catching up on campus news. She substitute teaches kindergarten through high school and her husband teaches law and writes mystery stories.

Marilyn Young Folta lives in Enfield, CT, and works for the Somers (CT) Board of Education.

Anne Cleveland Lange is self-employed as a lecturer and teacher of flower arranging. She is vice president of the Andover Garden Club.

Marsha Kolsky Traub, '79G, was a guest speaker at a coffee evening sponsored by the Duxbury PTA. She spoke on positive ways to meet the challenges of raising children today.

1960

Lenore Berman Lieberman lives in Hillsdale, NY, and works for Continental Group, Inc.

Linda Baur Maston lives in Amherst, NH, and works for the Amherst School District.

June Kress Pratt, of Hingham, works for the Hingham Public Schools.

Fran Cooperman Taber has lived in Swarthmore, PA, for three years. Her husband, **Bob**, is director of pharmaceutical research at DuPont. Her twins are grown. **Scott** is in a doctoral program at U. Wisconsin and **Stacy** is a financial analyst at a major investment bank. Youngest daughter, **Jennifer** (15), is a hopeful actress. **Fran** is busy volunteering at their synagogue and with Hadassah.

1961

Judith Scherban Fine is teaching pre-school at the New England Hebrew Academy in Brookline.

1962

Janet Whalen Stewart has been a certified instructor with Dale Carnegie Courses for 5 years. "I really enjoy it!" She has lived in Tucson, AZ, for 17 years.

1963

Judith Kimball Emerson, her husband, and children live in St. Louis, MO. Daughter **Elizabeth** spent her junior year in Belgium through the American Field Service. **Paula** is chairman of the recruitment committee of her daughter's private school.

Sonya Goldstein Franklin, now divorced, lives with her 3 children in Northridge, CA, and teaches elementary grades in Los Angeles.

Carole Stark Goldstein lives in Sudbury where she is employed by the public schools.

Rosalyn Cohen Kaufmann lives in Sudbury where she is employed by the Sudbury Public Schools. Her daughter, **Cheryl**, is a sophomore at Brandeis and son **Mark** will attend Harvard this fall.

Marion Abrams Kay lives in Severna Park, MD, and works for Intel Corp.

Linda Leveton Radding achieved the "Rookie of the Year" award from Landry, Lyons, & Whyte Real Estate in Longmeadow for her first year's sales performance.

Marilyn Kramer Yassin teaches reading, career exploration, and alternative vocational education at the J. Everett Light Career Center in Indianapolis, IN.

1964

Ann Quain Abbott and her husband, **Edwin**, live in Bozeman, Montana.

Karen Finkle Marcus has lived in California for 17 years. She works part time in real estate and as a substitute teacher. She regrets missing her 20th reunion which was held the weekend of her daughter's Bat Mitzvah. Her son will be a senior in high school.

Carol Goldman Slippen works part time for the information and referral service of the Child Care Council of Suffolk (NY). Her son, **Jeff**, will attend Union College this fall, **Marc** is in grade 10, and **Danny** is in grade 5.

1965

Carol Adams-Melchor has lived in Santa Fe, NM, since 1970. She taught in the school system there for 10 years. Her husband is an American Indian and **Carol** stays at home with her 5-year-old daughter.

Judith Dunn Graham, of Wakefield, is employed by Our Lady of Nazareth Academy.

Rhoda Friedman Handwerker lives in New City, NY, and sells advertising space for *Rockland Review*, a local newspaper.

Holly Woodbury Steiss works for the Melrose Public Schools and lives in Beverly.

1966

Leslie Contos Campbell is the assistant director of the Presbyterian Nursery Day School in Swarthmore, PA, where she, her husband, and two children have lived for 13 years. This is her eighth year with the school.

Elizabeth Harper recently graduated from the Lawrence Memorial Hospital School of Nursing in Medford.

Judith Gootkin Harvey lives in Rochester, NY, where she is completing her Master's degree in education at Nazareth College. She and her husband, **Bob**, have two sons, **Jonathan** (13) and **Alex** (9).

Jane Meyer Heard, her husband, **David**, and **Jennifer** (14) live in Sandwich.

Jonina Herter resides in New York City where she is employed by Columbia University.

Phyllis Mishkin Meyers lives in Franklin with husband **Milt**, **Dina** (16), and **Teddy** (11). "We're all great and enjoy it here very much."

Constance Murphy Treen substitute teaches in Attleboro, mostly at the middle school level. She has three daughters.

1967

Susan Geller is a May graduate of the Univ. of Maryland School of Social Work with a concentration in health care.

Francee Sigal Solomon has moved to Weatogue, CT, and teaches grade 5 in Simsbury.

1968

Joan Schneider Carp works at the Pierce Extended Day Program in Newton.

Lois Rosner Older is a real estate broker for Merrill Lynch Realty and was the top selling associate in 1983 and 1984. She is a member of the Leading Edge Society of multi-million dollars in sales. Her husband is an ophthalmic surgeon. Their children, **Benjamin** and **Jessica**, are 14 and 12. They reside in Tampa, FL.

Susan Wright Regan recently held the 21st annual recital of her school, The Susan Wright School of Dance Education. She is director, choreographer, and teacher.

Linda Leshner Revzan works for the Cabin John Toy Corp. and lives in Potomac, MD.

1969

Andrea Driscoll is director of volunteer services and community relations at the Lutheran Home of Worcester. In her spare time she paints landscapes and greeting cards. Her volunteer work includes the Alternative Sentencing Project, being president of the Council of Directors of Volunteer Services for Worcester County, and the Bancroft School where her daughter attends grade 5.

Janey Kuchinsky Frank returned to teaching after 10 years at the Perry Elementary School in South Boston. "My class is an SAR/LAB and I feel as though I've come home!"

Judith Kasprzak Malcolm lives in Rockport, ME, with her husband, **Jerry**. She is a state consultant for gifted/talented education for the State of Maine Dept. of Education. **Judith** is completing a CAGS in Superintendency at Univ. of Maine at Orono. She hosted a 75th anniversary party for Lesley alumni in May.

Nancy Dean Ross teaches at the Potomac Village Nursery School. She and her husband, **Robert**, and children **Lauren** (8) and **Joshua** (5) live in Bethesda, MD.

Judy Milhender Shulman lives in Washington, DC, with husband **Jerry**, **Katharine** (8), and **Victoria** (3).

1970

Gwen Kotzen Fisher misses teaching and is looking for a part-time teacher or tutor position. She and her husband, **Marty**, and two children live in Ossining, NY. She sees **Ronne Grufferman Kaplan** and **Sandy Birnbach Hoagland** (both '70) often.

Deborah Slutsky Frank has been a polygraph examiner for 3 years, doing both criminal and private industry testing. She also teaches an adult reading improvement class in a community schools program. "I'm busy!"

Karen Hecht Sandofsky writes that her son, **Adam** (16), a sophomore in high school, has become a member of the National Honor Society.



Class of 1975



Class of 1980

Graduate Class Notes

1971

Gail Duboe is employed by Fidelity Marketing and Research Company in Boston.

Wendy Cohen Dubinsky is employed by the Winthrop public schools and lives in Marblehead.

Lois Brookman Huntley resides in Old Lyme, CT, and works for the Norwich Board of Education.

Doris Wilhousky, of Newport, RI, is employed by the Portsmouth School Dept.

Linn Wilson lives in Newfane, VT, where she is employed by the Newfane School District.

1972

Deborah Soloman Christian lives in Acton with her 2 children, ages 3 and 6½. Her husband is assistant treasurer for a paper company in Medford.

Dagny Fidler is employed by the Des Moines (IA) Independent School District.

Maxine S. Lazovick is assistant vice president in the credit administration division of InterFirst Bank in Dallas, TX.

Linda Laquerre Nawrot is employed by the West Hartford (CT) Board of Education and has two children, ages 2½ and 18 months.

Carla W. Newton has been admitted as a partner in the law firm of Hendel, Collins & Stocks, P.C., of Springfield.

Caryn LeWinter Paris married Howie Paris last July. He is the brother-in-law of her Lesley roommate.

1973

Sandra Malloy Blake was recently appointed Teacher-In-Charge, Occupational Education, at Cambridge Rindge and Latin High School.

Elaine Burke Davis lives in Marshfield Hills and works for the Norwell Public Schools.

Laurie Greller lives in Greenwich, CT, and works for the Port Chester Board of Education.

Debby Shapiro Kraft has lived in St. Louis for 10 years. She has two children, 6 and 2. Debby enjoyed the St. Louis alumni gathering in April with Vice President Jennifer Page.

Sheryl Mazur Newcomer teaches grade 7 language arts. She lives in Georgia and her daughter, Rachel, is 1-year-old.

1974

Lisa Ehrlich works for Digital Equipment Corporation and lives in Shirley.

Jan Fogel lived, worked, and studied for five months on an Israeli kibbutz. She plans a return visit there. Jan is working as a Mother-in-Deed, caring for 2 children. "It's an exhausting challenge but I'm hanging in there!"

Anne Johnson Gilford is a program coordinator for a high-risk tutoring program sponsored by McGraw YMCA in Evanston, IL. She is also a fitness instructor at the Y. Anne has three children: Sarah (5½), Zachary (3½) and Eliza (1).

Christine Cannell Jones is getting involved in Junior Achievement. She lives in Scarborough, ME.

Jill Collier Robinson works for the Bloomfield (CT) Board of Education and lives in Suffield.

Meryl Aaron Stewart, of Stratford, CT, works for MK Temporary Services. She would love to hear from her classmates.

Last winter, **Ann Vincola**, spoke at Nichols College in Dudley at a public forum on women managing families and careers. Three years ago, Ann established a consulting firm, Corporate Child Care Consultants, in Brookline, which helps corporations and institutions plan and set up day care facilities. She also teaches at Wheelock College Graduate School.

1975

Jennifer Van Dusen Henkel is a coordinator of an early childhood education grant program in Augusta, ME. She will be a speaker at the New England Kindergarten Conference at Lesley in November.

Denise Pervere Lemay lives in Gill and works for the Gill-Montague Regional School System.

Meredith Blake Leonard is a one-on-one tutor at the Lexington Christian Academy where her son is a freshman. She resides in Wayland.

Lynne Abramowitz Lundy is studying nursing at Villanova University.

Amy Bishins McLean and her husband are enjoying their second year in business, distributing custodial and industrial products in southeastern Mass.

Lynne Molnar lives in Cambridge and is finance director for the congressional campaign of Thomas Vallely.

Carol Bradley Moore, husband John, and their two children live in Mattapan. Carol is a resource room teacher at the John Marshall School, a Boston public school.

Virginia Tocci Newcomb lives in Marshfield and works at the Steeple School.

Kathleen O'Connell Schott and her husband, Russell, are busy restoring their 150-year-old colonial home in Pepperell. Kathy teaches at Kennedy Memorial Hospital. She would love to hear from friends.

Judith Murray Vetovitz has left education to become Project Manager-Technical Publications for Kentucky Fried Chicken. She feels Lesley provided her with the necessary skills to make this career change.

1976

Pamela Johnson Palmer is on the Board of Trustees of Daybreak Crisis Pregnancy Center in Harvard Square.

Nancy S. Tobin is advertising manager at the corporate headquarters of Scandinavian Design of Natick.

1977

Linda Kierstead Bell has been a special education teacher with the Malden public schools since her Lesley graduation. She married Arnold Bell in 1977. They have three children: Eric (4), Maureen (2), and Michael (1). She has been on a two-year leave of absence but will return this fall.

Carol Ann Cook Kennedy and her family live in Foxboro where she is self employed.

Carol Mahn has returned to teaching. She is a grade 3 teacher in the Lincoln/Hanscom school district.

1978

Ginny Malakie King teaches weaving to handicapped adults at Spindlegirls in Brunswick, ME. Her husband, John, practices law in Portland.

1979

Ursula Boyle is head teacher for the Medford After-School Program. Children from kindergarten through grade 4 attend.

Michele Baxter Hewitt, '82G, is operating an insurance brokerage previously run by one of her parents. She is studying for a securities license and a financial planner's certificate.

Sue Levin lives with **Michele Pola** and **Roberta Mullin**, both class of '79, in Houston, TX.

Suzanne Winchester Miller, of Lexington, is starting her own school, "Busy Kids".

Mary Rodgers is a personnel consultant for Franklin Pierce Associates in Boston and lives in Brighton.

1980

Jaymie Kraut Chamberlain, of Saco, ME, works at the Gov. Baxter School for the Deaf.

Roxanne MacDonald Curley is employed by Penton/IPC Publishing Co. and lives in Shaker Heights, OH.

Julie Pelc Finer lives in Framingham and is employed by New England Mutual Life.

Sanda Richstone Granner continues to live and teach in Montreal. She would love to hear from anyone visiting in the area.

Susan B. Heckler is a Graduate Admissions Evaluator at UMass-Boston, Harbor Campus. She plans to begin graduate studies herself at UMass.

Linda Kipper is employed by Communities for People, Inc., and lives in Providence, RI.

Doreen McNamara resides in Richmond, VA, and is employed by the King William School Board.

Catherine Modzelewski works for Bear Stearns & Company and lives in Allston.

Laurie Nota is enjoying her third year as coordinator/teacher of the Exceptional Education Program for Easter Seals of Sarasota and Manatee Counties in Florida. The program is a 12-month calendar school program for severe-profound mentally and physically challenged adults.

1981

Christine Kuhn is a paraprofessional for the National College of Education. This fall she will begin a Master's program in Library Science at NIU.

Kim Claflin LaBarge's daughter is 2 and a second child was due in August. Kim enjoyed getting together with Lesley alumni at the St. Louis 75th Anniversary celebration.

Lynn Goldstein Maiman received an M.A. degree in administration and supervision from Nova Univ. in Ft. Lauderdale, FL. She and her husband, Lenny, moved to a new home in Plantation, FL, and she would love to hear from alumni in the area.

Dorothy Matassarini is teaching at a school for pregnant teens in the Houston ISD. She teaches grade 6 mathematics through Algebra 1.

Sheri-lyn Lockwood Nowill lives in Houston, TX, and teaches prekindergarten in a private school that plans to begin using the Andover Reading Program. She also works part time as a bookkeeper for a company that manages off-shore crew boats.

Kelli Gallagher Zilk lives in Walnut Creek, CA, and is employed at the St. Jariath School.

1982

Rachel B. Kummins is a special needs teacher at Temple Beth El in Swampscott. She is also active in the Girl Scouts and Brownie troops in Lynn.

Nancy Lahart has been appointed a customer service officer at Vermont National Bank in Brattleboro.

Denise Laferriere lives in Cumberland, RI, and works at St. Mary-Sacred Heart School.

Ann Lessard teaches severely handicapped 5-12-year-olds in the Long Beach Unified School District. She is enrolled in a Master's program for the severely handicapped at Calif. State Univ. in Dominguez Hills. She sends greetings to friends in the class of '82.

M. Katherine Meyer-Benzer and her husband, Dale, live in New York City's upper east side. She has taught grade 5 for the Archdiocese of New York for one year.

Michelle Nadeau, of Arlington, has been named legislative aide for Rep. Steven V. Angelo, D-Saugus. She is responsible for constituent services for Saugus and three precincts of Ward 1 in Lynn.

1983

Lisa DeGuglielmo is employed by the town of Lexington.

Jennifer Dobrowolski is employed by Data General Corporation.

Mary Ferriter is a law student at Suffolk University.

Anne Gould will begin her second year teaching autistic adolescents this fall. Her class is sponsored through TEACH at Univ. of NC-Chapel Hill. She plans to start graduate studies at Appalachian State Univ. next spring.

Janet Lanigan lives in Holbrook and works for Smith Barney.

Bonnie MacKay completed her second year of teaching "as the special education department" at the Block Island Consolidated School in Rhode Island. She managed a restaurant during the summer.

Joanne Poncelet is a resource teacher and was recently promoted to synergetic liaison in a junior high school in the Spring Branch Independent School District in Houston, TX.

Elaine Silverberg is a clinical evaluator at Elmcrest Psychiatric Institute in Portland, CT. She is taking courses in a special education master's program. "I have found my job to be most fulfilling and rewarding."

1984

Maud Archer is employed by New England Telephone's personnel dept. in Boston.

Nancy Chittim has been appointed admissions/alumni coordinator at Northfield Mount Hermon School.

Laurie Haney is a math and computer teacher at Brunswick (ME) Junior High School.

Janet Sansverro is a program teacher at The Center for the Performing Pre-Schooler in Roslindale. The center teaches 3-year-olds cooperative play, socialization, creative arts, language development, and individual activities through a group experience program.

Education

Judith Edwards Norton, '65, lives in Paoli, PA, and is employed by the System Development Corp., a Burroughs Company.

Marilyn Beach, '67, is self-employed and lives in Lunenburg.

Donna MacNeill Heffner, '70, lives in Mercer Island, WA, and is employed by the Bush School.

Susan Klein, '71, a professional storyteller, recently performed for children at the Burnell Campus Laboratory School in Brockton in a program sponsored by parents and school administrators. Susan has performed throughout New England, the Atlantic Coast states, and Alaska. She was a Fulbright recipient in 1982.

Joan G. Warner, '71, lives in Newton Lower Falls where she is employed by the City of Newton.

Patricia Karasick, '72, lives in Venice, CA, and works for the Los Angeles Unified School District. She reports that this district is looking for 2,000 teachers. "Experienced teachers are rated in with at least 7 years and there's never any snow to shovel."

Nancy Warner Hanna, '74, of Pelham, NY, received a Master of Divinity degree from Union Theological Seminary in New York City. She would like to be ordained a deacon, then a priest, in the Episcopal Church. Nancy's husband, Ali, is a management consultant and their daughter, Anne, is a student at the Para-Educator Center at N.Y. Univ.

Suzanne Steenburg Hill, '76, lives in Villanova, PA. Her husband, Crawford, teaches biology and coaches wrestling at Episcopal Academy in Merion, PA.

Marilyn Bochnik Adler, '78, will live in Sweden for a year while her husband, John, studies on a fellowship in neurosurgery.

Mary Pat Kroboth Berends, '78, works at the Princeton Day School and lives in Hopewell, NJ.

Peter Forsythe, '78, teaches grade 8 English and journalism at Guest Middle School in Detroit, MI.

Naomi Sao Pedro Min, '78, directs a community education program for immigrant and minority families in San Francisco's Mission district. She would like to tell Lesley students of the exciting and stimulating internships available.

Deborah Maher, '79, teaches grade 3 on Martha's Vineyard. She aspires to be an elementary school principal and is active in the Nuclear Weapons Freeze Movement.

Carol Sfikas, '82, is a head counselor for the New Britain (CT) YWCA Summer Sizzlers Program, a recreational program for children preschool through age 15.

Albina S. Cannavaciolo, '83, of North Haven, CT, is employed by Hamden Hall Country Day School. She is on the Board of Directors of the National Council of Teachers of Mathematics and has been a speaker, inservice workshop leader, and a consultant in 23 states and Canada.

Becky Graber, '84, a professional storyteller, recently performed at the Barrington Elementary School in Dover, NH. She teaches music at Hampton (NH) Centre School.

Carol P. Nahigian, '84, of Arlington, works at the Bartlett School.

Sally Anne Thompson, '84, teaches at the Orangedale School in Phoenix, AZ, and lives in nearby Paradise Valley.

Robin R. Welch, '84, is the director of instruction and drama at the Computer-Ed Camp at Babson College in Wellesley.



Graduate School Alumni Lesley Johnson, '78 CAGS, and Barbara Schilling, '50, '78 SPED, on their way to a seminar.



Some of the Joys of Alumni Weekend

**Postmaster; Send
Address Changes to**

**The
CURRENT**

**Lesley College
29 Everett Street
Cambridge, MA 02238**

Editor

Kathryn K. Furlong

Alumni Director

Hannah Roberts

Editorial Assistant

Susan Williams

Photographers

Paul Foley
Kathryn Furlong
Hannah Roberts
Susan Williams
Melinda Gordon
Martha Stewart

Non-Profit Org.
U.S. Postage
PAID
Boston, MA
Permit No. 20